



七豪牌

# 主上工業股份有限公司

PRAISE PRECISION IND. CO., LTD.



品質  
*QUALITY*

精密

*PRECISE*

鋼性

*RIGIDITY*

服務

*SERVICE*

[www.7-hero.com.tw](http://www.7-hero.com.tw)

**A 固定頂針系列 SOLID CENTERS SERIES**

<b>TYPE:301</b> 高碳鋼固定頂針.....	A1
SOLID CENTERS OF HIGH CARBON STEEL	
<b>TYPE:302</b> 中碳鋼固定頂針.....	A2
SOLID CENTERS OF MEDIUM CARBON STEEL	
<b>TYPE:304</b> 半邊中碳鋼固定頂針.....	A3
HALF-SIDE SOLID CENTERS OF MEDIUM CARBON STEEL	
<b>TYPE:305</b> 凹陷型高碳固定頂針.....	A4
FEMALE SOLID CENTERS OF HIGH CARBON STEEL	
<b>TYPE:306</b> 半邊凹陷型高碳固定頂針.....	A5
HALF-SIDE FEMALE SOLID CENTERS OF HIGH CARBON STEEL	
<b>TYPE:310</b> 鎢鋼固定頂針 A級.....	A6
SOLID CENTERS OF CARBIDE TIPPED (A CLASS)	
<b>TYPE:311</b> 鎢鋼固定頂針 AA級.....	A7
SOLID CENTERS OF CARBIDE TIPPED (AA CLASS)	
<b>TYPE:312</b> 半邊鎢鋼固定頂針.....	A8
HALF-SIDE SOLID CENTERS OF CARBIDE TIPPED	
<b>TYPE:321</b> 特長型鎢鋼固定頂針.....	A9
EXTENSION SOLID CENTERS OF CARBIDE TIPPED	
<b>TYPE:322</b> 特長型半邊鎢鋼固定頂針.....	A10
EXTENSION HALF-SIDE SOLID CENTERS OF CARBIDE TIPPED	
<b>TYPE:330</b> 加大型鎢鋼固定頂針.....	A11
ADD-LARGE SOLID CENTERS OF CARBIDE TIPPED	
<b>TYPE:331</b> 加大型半邊鎢鋼固定頂針.....	A12
ADD-LARGE HALF-SIDE SOLID CENTERS OF CARBIDE TIPPED	
<b>TYPE:332</b> 殼型鎢鋼固定頂針.....	A13
SHELL SOLID CENTERS OF CARBIDE TIPPED	
<b>TYPE:350</b> 凹陷型鎢鋼固定頂針.....	A14
FEMALE SOLID CENTERS OF CARBIDE TIPPED	
<b>TYPE:351</b> 半邊凹陷型鎢鋼固定頂針.....	A15
HALF-SIDE FEMALE SOLID CENTERS OF CARBIDE TIPPED	
<b>TYPE:355</b> 附螺母型鎢鋼固定頂針.....	A16
SOLID CENTERS OF CARBIDE TIPPED WITH DRAW-OFF NUT	
<b>B 活動頂針系列 LIVE CENTERS SERIES</b>	
<b>TYPE:500 &amp; 501 &amp; 502</b> 普及型迴轉頂針.....	B1
LIVE CENTERS FOR LIGHT DUTY	
<b>TYPE:510 &amp; 511</b> 高精密型迴轉頂針.....	B2
LIVE CENTERS FOR HIGH PRECISION	
<b>TYPE:515</b> 重切削迴轉頂針.....	B3
LIVE CENTERS FOR HEAVY-DUTY	
<b>TYPE:516</b> 重切削迴轉頂針.....	B4
LIVE CENTERS FOR HEAVY-DUTY	
<b>TYPE:518</b> 附螺母型重切削迴轉頂針.....	B5
LIVE CENTERS FOR HEAVY-DUTY WITH DRAW-OFF NUT	
<b>TYPE:519</b> 附螺母型重切削迴轉頂針.....	B6
LIVE CENTERS FOR HEAVY-DUTY WITH DRAW-OFF NUT	
<b>TYPE:520 &amp; 521</b> 重切削迴轉頂針.....	B7
LIVE CENTERS FOR HEAVY-DUTY	
<b>TYPE:522</b> 重切削迴轉頂針(圓錐形滾筒軸承).....	B8
LIVE CENTERS FOR HEAVY-DUTY(TAPER ROLLER BEARING)	
<b>TYPE:523 &amp; 524</b> 高速型重切削迴轉頂針.....	B9
LIVE CENTERS FOR HIGH-SPEED HEAVY-DUTY	
<b>TYPE:530</b> 精密型互換式迴轉頂針.....	B10
EXCHANGEABLE LIVE CENTERS FOR PRECISION	
<b>TYPE:532</b> 重切削互換式迴轉頂針.....	B11
EXCHANGEABLE LIVE CENTERS FOR HEAVY-DUTY	
<b>TYPE:535</b> 重切削互換式迴轉頂針.....	B12
EXCHANGEABLE LIVE CENTERS FOR HEAVY-DUTY	
<b>TYPE:536</b> 重切削互換式迴轉頂針.....	B13
EXCHANGEABLE LIVE CENTERS FOR HEAVY-DUTY	
<b>TYPE:537</b> 高速型重切削互換式迴轉頂針.....	B14
EXCHANGEABLE LIVE CENTERS FOR HIGH-SPEED HEAVY-DUTY	
<b>TYPE:540 &amp; 541</b> 互換式頂心.....	B15
EXCHANGEABLE INSERTS	
<b>TYPE:550</b> 強力型傘形頂針.....	B16
BEVEL ROLLING CENTERS FOR HEAVY-DUTY	
<b>TYPE:551</b> 互換式傘形頂針.....	B17
EXCHANGEABLE LIVE CENTERS FOR BULL NOSE	
<b>C 調整式頂針系列 ADJUSTABLE CENTER SERIES</b>	
<b>TYPE:560</b> 調整式傳動頂針.....	C1
ADJUSTABLE TRANSMISSION CENTER	
<b>TYPE:561</b> 插式頂針.....	C2
WORK-DRIVING CENTER	

**D 倒角刀系列 CHAMFERING TOOLS SERIES**

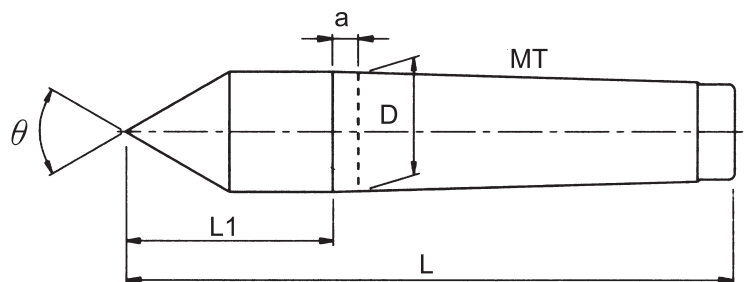
<b>TYPE:052</b> 調整式銼坑倒角刀.....	D1
COUNTERSINKER CHAMFERING TOOLS	
<b>TYPE:053</b> 捨棄式倒角刀.....	D2
THROW-AWAY CHAMFERING TOOLS	
<b>TYPE:054</b> 鎢鋼焊接式倒角刀.....	D3
CARBIDE HEAD CHAMFERING TOOLS	
<b>TYPE:055</b> 捨棄式倒角刀.....	D4
THROW-AWAY CHAMFERING TOOLS	
<b>E 鑽夾頭系列 DRILL CHUCKS SERIES</b>	
<b>TYPE:101</b> 標準型鑽床夾頭.....	E1
KEY-TYPE DRILL CHUCKS OF STANDARD	
<b>TYPE:102</b> 高級滾珠軸承式鑽夾頭.....	E2
KEY-TYPE DRILL CHUCKS OF BALL BEARING	
<b>TYPE:103</b> 電動用鑽夾頭附螺紋.....	E3
KEY-TYPE DRILL CHUCKS WITH THREADING	
<b>TYPE:104</b> 小型鑽夾頭.....	E4
KEY-TYPE DRILL CHUCKS OF SMALL	
<b>TYPE:120</b> 攻牙鑽孔夾頭附板手.....	E5
TAPPING & DRILLING CHUCKS WITH SPANNER WRENCH	
<b>TYPE:130</b> 熱鍛式鑽夾頭把手.....	E6
DRILL CHUCK KEYS OF HOT FORGING	
<b>TYPE:131</b> 冷鍛式鑽夾頭把手.....	E7
DRILL CHUCK KEYS OF COLD FORGING	
<b>TYPE:150</b> 快速鑽夾頭.....	E8
KEYLESS DRILL CHUCK	
<b>TYPE:151</b> 快速鑽夾頭附螺紋.....	E9
KEYLESS DRILL CHUCKS WITH THREADING	
<b>TYPE:152 &amp; 153</b> 快速鑽夾頭附板手.....	E10
KEYLESS DRILL CHUCKS WITH SPANNER WRENCH	
<b>TYPE:154</b> 整體式快速鑽夾頭附板手.....	E11
KEYLESS DRILL CHUCKS WITH SPANNER OF INTEGRATED	
<b>TYPE:156</b> 輕型塑鋼快速鑽夾頭附螺紋.....	E12
KEYLESS DRILL CHUCKS WITH THREADING OF PLASTIC	
快速鑽夾頭剖面圖.....	E13
SECTION DRAWING OF KEYLESS DRILL CHUCKS	
<b>TYPE:180</b> CNC用BT斜柄快速鑽夾頭附板手.....	E14
CNC KEYLESS DRILL CHUCKS WITH BT SHANK	
<b>TYPE:181</b> CNC用NT斜柄快速鑽夾頭附板手.....	E15
CNC KEYLESS DRILL CHUCKS WITH NT SHANK	
<b>F ER系列 ER COLLET SERIES</b>	
<b>TYPE:112ER</b> 螺母/ER板手.....	F1
ER CLAMPING NUT/ER SPANNER WRENCH	
<b>TYPE:111</b> 筒夾.....	F2
COLLET	
<b>TYPE:182</b> 直柄側固式ER筒夾柄.....	F3
STRAIGHT SHANK SIDE LOCK ER COLLET	
<b>G 其他配件系列 ACCESSORY SERIES</b>	
<b>TYPE:205</b> 快速交換接頭.....	G1
QUICK CHANGE DRILL CHUCKS & COLLET	
<b>TYPE:210</b> 精密鑽頭套筒.....	G2
DRILL SLEEVES	
<b>TYPE:211</b> 延長型鑽頭套筒.....	G3
EXTENSION DRILL SOCKETS	
<b>TYPE:230</b> 精密鑽夾頭柄.....	G4
PRECISE DRILL CHUCK ARBOR	
<b>TYPE:232</b> 精密鑽夾頭柄.....	G5
PRECISE DRILL CHUCK ARBOR	
<b>TYPE:233</b> 銑床直柄夾頭棒.....	G6
STRAIGHT SHANK DRILL CHUCK ARBOR	
<b>TYPE:234</b> 鑽夾頭柄附螺母.....	G7
DRILL CHUCK ARBOR WITH DRAW-OFF NUT	
<b>TYPE:235</b> 銑床直柄夾頭棒附螺母.....	G8
STRAIGHT SHANK DRILL CHUCK ARBOR WITH DRAW-OFF NUT	
<b>TYPE:051</b> 互換式星形板手組.....	G9
EXCHANGEABLE START-WRENCH	
<b>TYPE:600</b> 強力萬向磁性座(機械式).....	G10
UNIVERSAL MAGNETIC STAND (MECHANICAL TYPE)	
<b>TYPE:399</b> 傳動夾.....	G11
DRIVING CENTER	

# 高碳鋼固定頂針

# TYPE:301

## SOLID CENTERS OF HIGH CARBON STEEL

A1



### 特性:

- (1)本體使用"高碳鋼"之材質；經過熱處理。
- (2)本體及頂心經過精密研磨處理。
- (3)適用於車床及磨床等機械。
- (4)外徑斜度(Morse Taper)採用DIN806規格。

### Characteristics:

- (1)Body is made of with heat treatment "High Carbon Steel".
- (2)Body and Center is under precise grinding process, etc.
- (3)Application to lathe and grinder.
- (4)Morse Taper complies with DIN806 standard.

單位:m/m

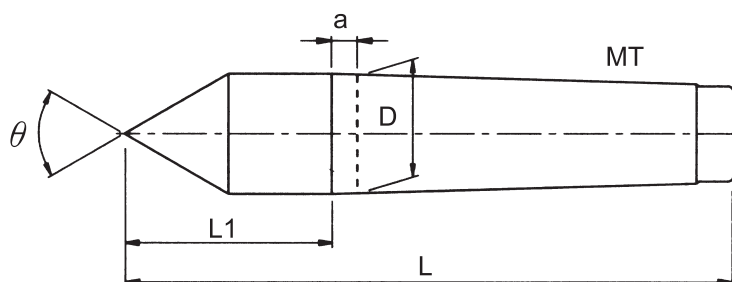
產品編號 STYLE No.	產品規格 MODEL No.	D	a	L1	L	Co.精度 Accuracy	$\theta$
301-01000-0000	MT1	12.065	3.5	25	82	0.005	60°
301-02000-0000	MT2	17.780	5	31	100	0.005	60°
301-03000-0000	MT3	23.825	5	39	125	0.005	60°
301-04000-0000	MT4	31.267	6.5	46	155	0.005	60°
301-05000-0000	MT5	44.399	6.5	64	200	0.005	60°
301-06000-0000	MT6	63.348	8	80	270	0.005	60°

# 中碳鋼固定頂針

# TYPE:302

## SOLID CENTERS OF MEDIUM CARBON STEEL

A2



### 特性:

- (1) 本體使用"S45C"之材質；經過熱處理。
- (2) 本體及頂心經過精密研磨處理。
- (3) 適用於車床及磨床等機械。
- (4) 外徑斜度(Morse Taper)採用DIN806規格。

### Characteristics:

- (1) Body is made of "S45C" with heat treatment.
- (2) Body and Center is under precise grinding process.
- (3) Application to lathe and grinder.
- (4) Morse Taper complies with DIN806 standard.

單位:m/m

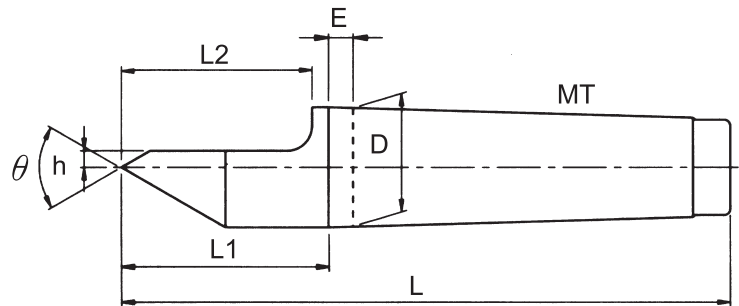
產品編號 STYLE No.	產品規格 MODEL No.	D	a	L1	L	Co.精度 Accuracy	$\theta$
302-01000-0000	MT1	12.065	3.5	25	82	0.005	60°
302-02000-0000	MT2	17.780	5	31	100	0.005	60°
302-03000-0000	MT3	23.825	5	39	125	0.005	60°
302-04000-0000	MT4	31.267	6.5	46	155	0.005	60°
302-05000-0000	MT5	44.399	6.5	64	200	0.005	60°
302-06000-0000	MT6	63.348	8	80	270	0.005	60°

# 半邊中碳鋼固定頂針

# TYPE:304

## HALF-SIDE SOLID CENTERS OF MEDIUM CARBON STEEL

A3



### 特性:

- (1) 本體使用"S45C"之材質；經過熱處理。
- (2) 本體及頂心經過精密研磨處理。
- (3) 適用於小工件及磨床等機械。
- (4) 外徑斜度(Morse Taper)採用DIN806規格。

### Characteristics:

- (1) Body is made of "S45C" with heat treatment.
- (2) Body and Center is under precise grinding process.
- (3) Application to lathe and grinder.
- (4) Morse Taper complies with DIN806 standard.

單位:m/m

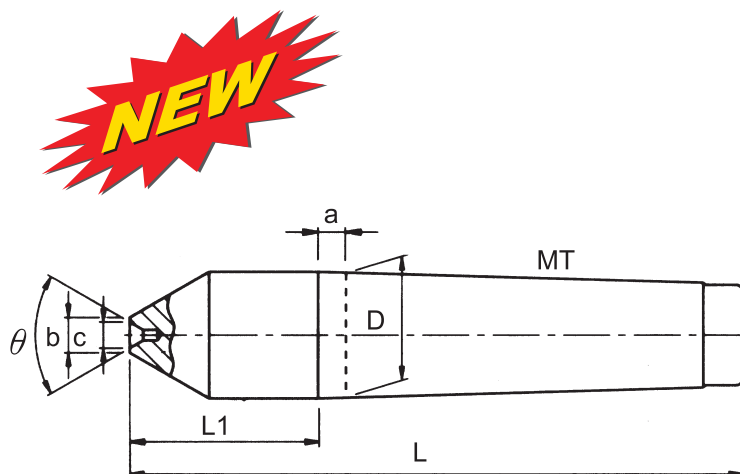
產品編號 STYLE No.	產品規格 MODEL No.	D	h	a	L1=L2	L	Co.精度 Accuracy	$\theta$
304-01000-0040	MT1	12.065	4	3.5	25	82	0.005	60°
304-02000-0040	MT2	17.780	4	5	31	100	0.005	60°
304-03000-0050	MT3	23.825	5	5	39	125	0.005	60°
304-04000-0060	MT4	31.267	6	6.5	46	155	0.005	60°
304-05000-0080	MT5	44.399	8	6.5	64	200	0.005	60°
304-06000-0010	MT6	63.348	10	8	80	270	0.005	60°
304-11000-2030	MTIE33	17.780	2.5	6.5	58	115	0.005	60°

# 凹陷型高碳固定頂針

# TYPE:305

## FEMALE SOLID CENTERS OF HIGH CARBON STEEL

A4



### 特性:

- (1)本體使用"高碳鋼"之材質；經過熱處理。
- (2)本體及頂心經過精密研磨處理。
- (3)適用於車床及磨床等機械。
- (4)外徑斜度(Morse Taper)採用DIN806規格。

### Characteristics:

- (1)Body is made of "High Carbon Steel" with heat treatment.
- (2)Body and Center is under precise grinding process, etc.
- (3)Application to lathe and grinder.
- (4)Morse Taper complies with DIN806 standard.

單位:m/m

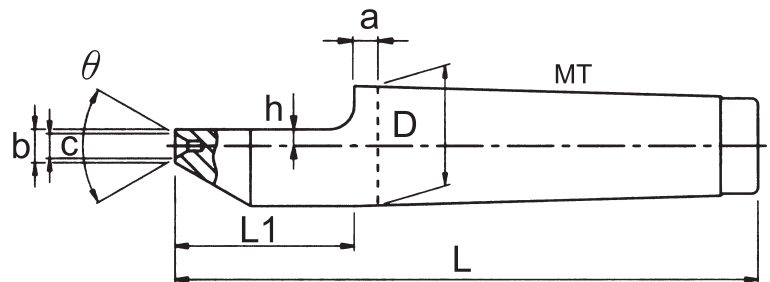
產品編號 STYLE No.	產品規格 MODEL No.	D	a	b	c	L1	L	Co.精度 Accuracy	θ
305-01000-3010	MT1-FM(Ø3xØ1)	12.065	3.5	4	3x1	20	77	0.005	60°
305-02000-4015	MT2-FM(Ø4xØ1.5)	17.780	5	6	4x1.5	27	96	0.005	60°
305-03000-5020	MT3-FM(Ø5xØ2)	23.825	5	8	5x2	33	119	0.005	60°
305-04000-6025	MT4-FM(Ø6xØ2.5)	31.267	6.5	10	6x2.5	43	152	0.005	60°

# 半邊凹陷型高碳固定頂針

# TYPE:306

## HALF-SIDE FEMALE SOLID CENTERS OF HIGH CARBON STEEL

A5



### 特性:

- (1)本體使用"高碳鋼"之材質；經過熱處理。
- (2)本體及頂心經過精密研磨處理。
- (3)適用於車床及磨床等機械。
- (4)外徑斜度(Morse Taper)採用DIN806規格。

### Characteristics:

- (1)Body is made of "High Carbon Steel" with heat treatment.
- (2)Body and Center is under precise grinding process, etc.
- (3)Application to lathe and grinder.
- (4)Morse Taper complies with DIN806 standard.

單位:m/m

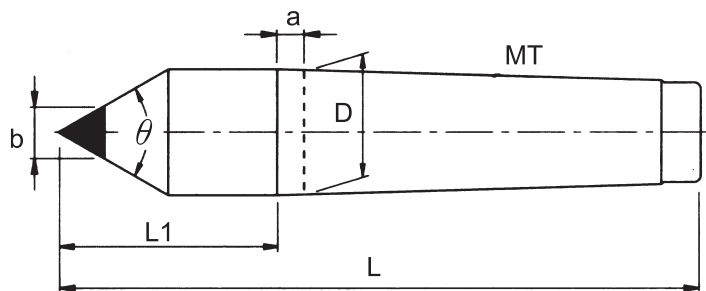
產品編號 STYLE No.	產品規格 MODEL No.	D	a	b	c	h	L1	L	Co.精度 Accuracy	$\theta$
306-01000-3010	MT1-FM (Ø3xØ1)	12.065	3.5	4	3x1	2	20	77	0.005	60°
306-02000-4015	MT2-FM (Ø4xØ1.5)	17.780	5	6	4x1.5	3	27	96	0.005	60°
306-03000-5020	MT3-FM (Ø5xØ2)	23.825	5	8	5x2	4	33	119	0.005	60°
306-04000-6025	MT4-FM (Ø6xØ2.5)	31.267	6.5	10	6x2.5	5	43	152	0.005	60°

# 鎢鋼固定頂針 AA級

# TYPE:311

## SOLID CENTERS OF CARBIDE TIPPED (AA CLASS)

A7



### 特性:

- (1) 本體使用"S45C"之材質；經過熱處理。
- (2) 本體及頂心經過精密研磨處理。
- (3) 適用於車床及磨床等機械。
- (4) 外徑斜度(Morse Taper)採用DIN806規格。

### Characteristics:

- (1) Body is made of "S45C" with heat treatment.
- (2) Body and Center is under precise grinding process.
- (3) Application to lathe and grinder.
- (4) Morse Taper complies with DIN806 standard.

單位:m/m

產品編號 STYLE No.	產品規格 MODEL No.	D	a	b	L1	L	Co.精度 Accuracy	$\theta$
311-01006-0000	MT1C06	12.065	3.5	6	25	82	0.005	60°
311-02008-0000	MT2C08	17.780	5	8	31	100	0.005	60°
311-03010-0000	MT3C10	23.825	5	10	39	125	0.005	60°
311-04014-0000	MT4C14	31.267	6.5	14	46	155	0.005	60°
311-05018-0000	MT5C18	44.399	6.5	18	64	200	0.005	60°
311-06030-0000	MT6C30	63.348	8	30	80	270	0.005	60°

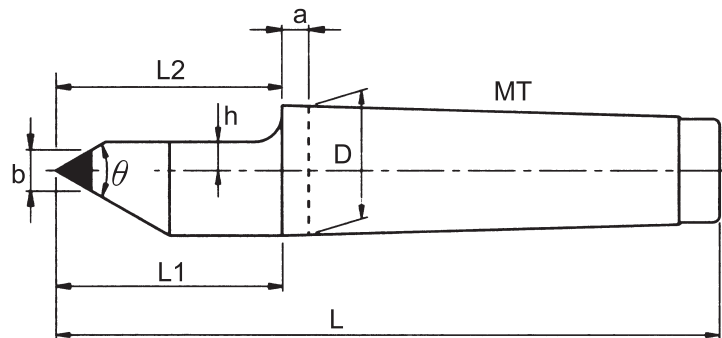


# 半邊鎢鋼固定頂針

# TYPE:312

## HALF-SIDE SOLID CENTERS OF CARBIDE TIPPED

A8



### 特性:

- (1)本體使用"S45C"之材質；經過熱處理。
- (2)本體及頂心經過精密研磨處理。
- (3)適用於車床及磨床等機械。
- (4)外徑斜度(Morse Taper)採用DIN806規格。

### Characteristics:

- (1)Body is made of "S45C" with heat treatment.
- (2)Body and Center is under precise grinding process.
- (3)Application to lathe and grinder.
- (4)Morse Taper complies with DIN806 standard.

單位:m/m

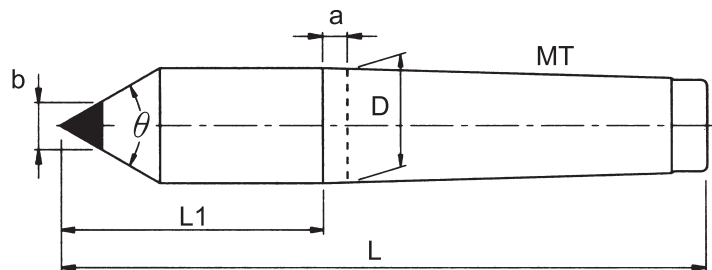
產品編號 STYLE No.	產品規格 MODEL No.	D	a	b	h	L1=L2	L	Co.精度 Accuracy	$\theta$
312-01006-0040	MT1C06	12.065	3.5	6	4	25	82	0.005	60°
312-02006-0040	MT2C06	17.780	5	6	4	31	100	0.005	60°
312-02008-0050	MT2C08	17.780	5	8	5	31	100	0.005	60°
312-03006-0040	MT3C06	23.825	5	6	4	39	125	0.005	60°
312-03008-0050	MT3C08	23.825	5	8	5	39	125	0.005	60°
312-03010-0060	MT3C10	23.825	5	10	6	39	125	0.005	60°
312-04006-0040	MT4C06	31.267	6.5	6	4	46	155	0.005	60°
312-04010-0060	MT4C10	31.267	6.5	10	6	46	155	0.005	60°
312-04014-0037	MT4C14(h:3.7)	31.267	6.5	14	3.7	46	155	0.005	60°
312-04014-0080	MT4C14	31.267	6.5	14	8	46	155	0.005	60°
312-05014-0080	MT5C14	44.399	6.5	14	8	64	200	0.005	60°
312-06018-0100	MT6C18	63.348	8	18	10	80	270	0.005	60°

# 特長型鎢鋼固定頂針

# TYPE:321

## EXTENSION SOLID CENTERS OF CARBIDE TIPPED

A9



### 特性:

- (1) 本體使用"S45C"之材質；經過熱處理。
- (2) 本體及頂心經過精密研磨處理。
- (3) 適用於車床及磨床等機械。
- (4) 外徑斜度(Morse Taper)採用DIN806規格。

### Characteristics:

- (1) Body is made of "S45C" with heat treatment.
- (2) Body and Center is under precise grinding process.
- (3) Application to lathe and grinder.
- (4) Morse Taper complies with DIN806 standard.

單位:m/m

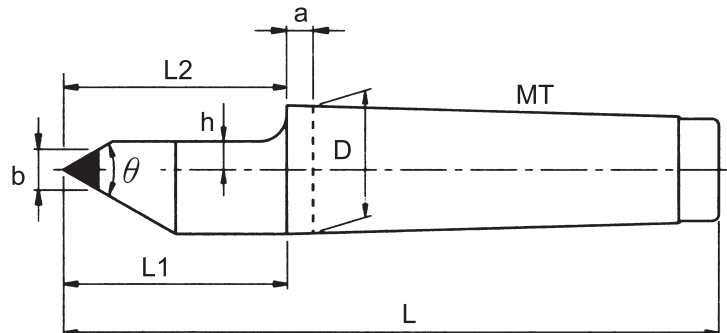
產品編號 STYLE No.	產品規格 MODEL No.	D	a	b	L1	L	Co.精度 Accuracy	$\theta$
321-01006-1600	MT1C06E16	12.065	3.5	6	41	98	0.005	60°
321-02008-1800	MT2C08E18	17.780	5	8	49	118	0.005	60°
321-03010-2700	MT3C10E27	23.825	5	10	66	152	0.005	60°
321-04010-4100	MT4C10E41	31.267	6.5	10	87	196	0.005	60°
321-04014-4100	MT4C14E41	31.267	6.5	14	87	196	0.005	60°
321-05018-3000	MT5C18E30	44.399	6.5	18	94	230	0.005	60°
321-06030-3500	MT6C30E35	63.348	8	30	115	305	0.005	60°

# 特長型半邊鎢鋼固定頂針

# TYPE:322

## EXTENSION HALF-SIDE SOLID CENTERS OF CARBIDE TIPPED

A10



### 特性:

- (1)本體使用"S45C"之材質；經過熱處理。
- (2)本體及頂心經過精密研磨處理。
- (3)適用於車床及磨床等機械。
- (4)外徑斜度(Morse Taper)採用DIN806規格。

### Characteristics:

- (1)Body is made of "S45C" with heat treatment.
- (2)Body and Center is under precise grinding process.
- (3)Application to lathe and grinder.
- (4)Morse Taper complies with DIN806 standard.

單位:m/m

產品編號 STYLE No.	產品規格 MODEL No.	D	a	b	h	L1	L2	L	Co.精度 Accuracy	$\theta$
322-01006-0040	MT1C06E16	12.065	3.5	6	4	41	41	98	0.005	60°
322-02006-0015	MT2C06E18(h:1.5)	17.780	5	6	1.5	49	39	118	0.005	60°
322-02008-0025	MT2C08E18(h:2.5)	23.825	5	8	2.5	49	39	118	0.005	60°
322-02008-0050	MT2C08E18	17.780	5	6	5	49	39	118	0.005	60°
322-03006-0015	MT3C06E27(h:1.5)	23.825	5	6	1.5	55	38	152	0.005	60°
322-03006-0040	MT3C06E27	23.825	5	6	4	55	55	152	0.005	60°
322-03008-0025	MT3C08E27(h:2.5)	23.825	5	8	2.5	55	55	152	0.005	60°
322-03008-0050	MT3C08E27	23.825	5	8	5	55	55	152	0.005	60°
322-04006-0015	MT4C06E41(h:1.5)	31.267	6.5	14	1.5	87	69	196	0.005	60°
322-04008-0025	MT4C08E41(h:2.5)	31.267	6.5	14	2.5	87	69	196	0.005	60°
322-04010-0060	MT4C10E41	31.267	6.5	10	6	87	69	196	0.005	60°
322-04014-0037	MT4C14E41(h:3.7)	31.267	6.5	14	3.7	87	69	196	0.005	60°
322-04014-0080	MT4C14E41	31.267	6.5	14	8	87	69	196	0.005	60°
322-05014-0080	MT5C14E30	44.399	6.5	14	8	94	79	230	0.005	60°
322-06018-0010	MT6C18E35	63.348	8	18	10	115	80	305	0.005	60°

# 加大型鎢鋼固定頂針

# TYPE:330

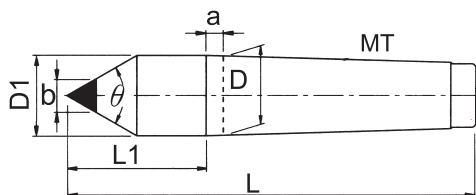
## ADD-LARGE SOLID CENTERS OF CARBIDE TIPPED

### 特性:

- (1)本體使用"S45C"之材質；經過熱處理。
- (2)本體及頂心經過精密研磨處理。
- (3)適用於車床及磨床等機械。
- (4)外徑斜度(Morse Taper)採用DIN806規格。

### Characteristics:

- (1)Body is made of "S45C" with heat treatment.
- (2)Body and Center is under precise grinding process.
- (3)Application to lathe and grinder.
- (4)Morse Taper complies with DIN806 standard.



單位:m/m

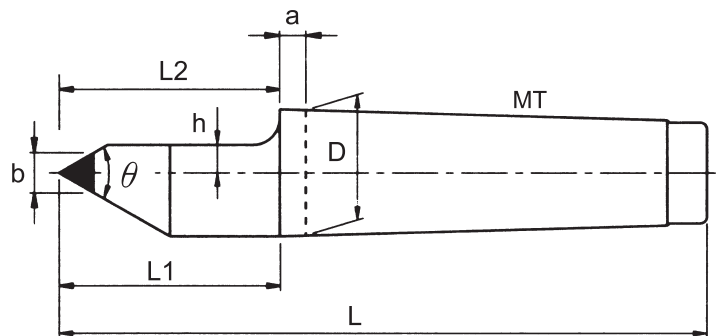
產品編號 STYLE No.	產品規格 MODEL No.	D	D1	a	b	L1	L	Co.精度 Accuracy	$\theta$
330-01008-0000	MT1C08	12.065	-	3.5	8	29	86	0.005	60°
330-01010-0000	MT1C10	12.065	-	3.5	10	29	86	0.005	60°
330-02010-0000	MT2C10	17.780	-	5	10	31	100	0.005	60°
330-02012-0000	MT2C12	17.780	-	5	12	31	100	0.005	60°
330-02014-0024	MT2C14L24	17.780	24	5	14	47	117	0.005	60°
330-02018-0028	MT2C18L28	17.780	28	5	18	51	120	0.005	60°
330-02020-0028	MT2C20L28	17.780	28	5	20	53	122	0.005	60°
330-02030-0021	MT2C30Full-121( $\phi$ 31.6)	17.780	31.6	5	31.6	52	122	0.005	60°
330-03014-0000	MT3C14	23.825	-	5	14	42	128	0.005	60°
330-03014-3000	MT3C14E30	23.825	-	5	14	67	155	0.005	60°
330-03018-0000	MT3C18	23.825	-	5	18	46	132	0.005	60°
330-03018-3400	MT3C18E34	23.825	-	5	18	73	159	0.005	60°
330-03024-0024	MT3C24Full-137( $\phi$ 24.1)	23.825	24.1	5	24.1	51	137	0.005	60°
330-03024-0035	MT3C24L35	23.825	35	5	24	68	154	0.005	60°
330-03030-0040	MT3C30Full-150( $\phi$ 31.6)	23.825	31.6	5	31.6	73	150	0.005	60°
330-04018-0000	MT4C18	31.267	-	6.5	18	49	158	0.005	60°
330-04018-4100	MT4C18E41	31.267	-	6.5	18	91	200	0.005	60°
330-04020-0000	MT4C20	31.267	-	6.5	20	52	161	0.005	60°
330-04020-4100	MT4C20E41	31.267	-	6.5	20	91	200	0.005	60°
330-04025-0000	MT4C25	31.267	-	6.5	25	55	164	0.005	60°
330-04025-4100	MT4C25E41	31.267	-	6.5	25	97	206	0.005	60°
330-04030-1530	MT4C30Full-170( $\phi$ 31.6)	31.267	31.6	6.5	31.6	61	170	0.005	60°
330-04030-3730	MT4C30Full-210( $\phi$ 31.6)	31.267	31.6	6.5	31.6	101	210	0.005	60°
330-04036-0054	MT4C36L54	31.267	54	6.5	36	63	172	0.005	60°
330-04036-3154	MT4C36E31L54	31.267	54	6.5	36	77	186	0.005	60°
330-04040-0058	MT4C40L58	31.267	58	6.5	40	73	182	0.005	60°
330-04040-3558	MT4C40E35L58	31.267	58	6.5	40	81	190	0.005	60°
330-05025-0000	MT5C25	44.399	-	6.5	25	70	206	0.005	60°
330-05030-0000	MT5C30	44.399	-	6.5	30	74	210	0.005	60°
330-05036-0055	MT5C36L54	44.399	54	6.5	36	64	200	0.005	60°
330-05036-3755	MT5C36E37L54	44.399	54	6.5	36	101	237	0.005	60°
330-05040-0058	MT5C40L58	44.399	58	6.5	40	72	208	0.005	60°
330-05040-4058	MT5C40E40L58	44.399	58	6.5	40	104	240	0.005	60°
330-05045-0045	MT5C45Full( $\phi$ 44.7)	44.399	44.7	6.5	44.7	64	200	0.005	60°
330-05045-3045	MT5C45Full-230( $\phi$ 44.7)	44.399	44.7	6.5	44.7	94	230	0.005	60°
330-06036-0064	MT6C36L64	63.348	-	8	36	88	278	0.005	60°
330-06040-0064	MT6C40L64	63.348	-	8	40	88	278	0.005	60°

# 加大型半邊鎢鋼固定頂針

# TYPE:331

## ADD-LARGE HALF-SIDE SOLID CENTERS OF CARBIDE TIPPED

A12



### 特性:

- (1)本體使用"S45C"之材質；經過熱處理。
- (2)本體及頂心經過精密研磨處理。
- (3)適用於車床及磨床等機械。
- (4)外徑斜度(Morse Taper)採用DIN806規格。

### Characteristics:

- (1)Body is made of "S45C" with heat treatment.
- (2)Body and Center is under precise grinding process.
- (3)Application to lathe and grinder.
- (4)Morse Taper complies with DIN806 standard.

單位:m/m

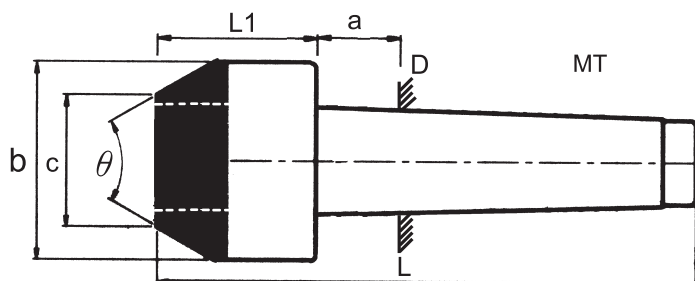
產品編號 STYLE No.	產品規格 MODEL No.	D	a	b	h	L1	L2	L	Co.精度 Accuracy	$\theta$
331-01008-0025	MT1C08E03	12.065	3.5	8	2.5	28	30	85	0.005	60°
331-02010-0060	MT2C10	17.780	5	10	6	31	31	100	0.005	60°
331-03014-0080	MT3C14	23.825	5	14	8	42	42	128	0.005	60°
331-03014-3080	MT3C14E30	23.825	5	14	8	69	55	155	0.005	60°
331-03018-0010	MT3C18	23.825	5	18	10	46	46	132	0.005	60°
331-03018-3410	MT3C18E34	23.825	5	18	10	73	59	159	0.005	60°
331-04018-0010	MT4C18	31.267	6.5	18	10	49	49	158	0.005	60°
331-04018-4110	MT4C18E41	31.267	6.5	18	10	91	79	200	0.005	60°
331-04020-0011	MT4C20	31.267	6.5	20	11	52	52	161	0.005	60°
331-04020-4111	MT4C20E41	31.267	6.5	20	11	91	91	200	0.005	60°
331-04025-0014	MT4C25	31.267	6.5	25	13.5	55	55	164	0.005	60°
331-04025-4114	MT4C25E41	31.267	6.5	25	13.5	78	78	206	0.005	60°

# 殼型鎢鋼固定頂針

# TYPE:332

## SHELL SOLID CENTERS OF CARBIDE TIPPED

A13



### 特性:

- (1)本體使用"S45C"之材質；經過熱處理。
- (2)本體及頂心經過精密研磨處理。
- (3)適用於車床及磨床等機械。
- (4)外徑斜度(Morse Taper)採用DIN806規格。

### Characteristics:

- (1)Body is made of "S45C" with heat treatment.
- (2)Body and Center is under precise grinding process.
- (3)Application to lathe and grinder.
- (4)Morse Taper complies with DIN806 standard.

單位:m/m

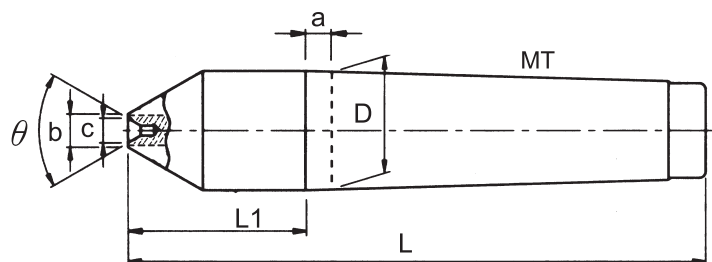
產品編號 STYLE No.	產品規格 MODEL No.	D	a	b	c	L1	L	Co.精度 Accuracy	$\theta$
332-03140-3516	MT3C35-16-140	23.825	5	35	16	54	140	0.005	60°
332-03155-3516	MT3C35-16-155	23.825	5	35	16	69	155	0.005	60°
332-03140-4020	MT3C40-20-140	23.825	5	40	20	54	140	0.005	60°
332-03155-4020	MT3C40-20-155	23.825	5	40	20	69	155	0.005	60°
332-03140-5030	MT3C50-30-140	23.825	5	50	30	54	140	0.005	60°
332-03155-5030	MT3C50-30-155	23.825	5	50	30	69	155	0.005	60°
332-04160-3516	MT4C35-16-160	31.267	6.5	35	16	51	160	0.005	60°
332-04175-3516	MT4C35-16-175	31.267	6.5	35	16	66	175	0.005	60°
332-04160-4020	MT4C40-20-160	31.267	6.5	40	20	51	160	0.005	60°
332-04175-4020	MT4C40-20-175	31.267	6.5	40	20	66	175	0.005	60°
332-04160-4525	MT4C45-25-160	31.267	6.5	45	25	51	160	0.005	60°
332-04175-4525	MT4C45-25-175	31.267	6.5	45	25	66	175	0.005	60°
332-04160-5030	MT4C50-30-160	31.267	6.5	50	30	51	160	0.005	60°
332-04175-5030	MT4C50-30-175	31.267	6.5	50	30	66	175	0.005	60°

# 凹陷型鎢鋼固定頂針

# TYPE:350

## FEMALE SOLID CENTERS OF CARBIDE TIPPED

A14



### 特性:

- (1) 本體使用"S45C"之材質；經過熱處理。
- (2) 本體及頂心經過精密研磨處理。
- (3) 適用於車床及磨床等機械。
- (4) 外徑斜度(Morse Taper)採用DIN806規格。

### Characteristics:

- (1) Body is made of "S45C" with heat treatment.
- (2) Body and Center is under precise grinding process.
- (3) Application to lathe and grinder.
- (4) Morse Taper complies with DIN806 standard.

單位:m/m

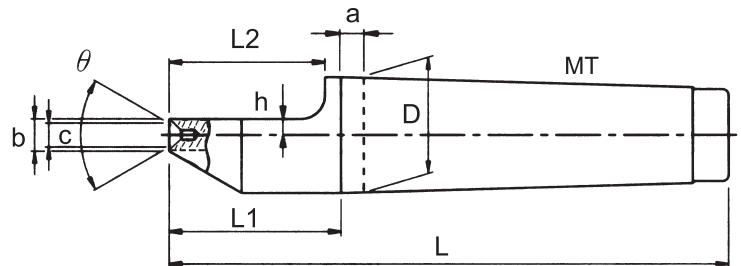
產品編號 STYLE No.	產品規格 MODEL No.	D	a	b	c	L1	L	Co.精度 Accuracy	$\theta = \theta 1$
350-01006-0015	MT1C06-FM(1.5x1)	12.065	3.5	6	1.5x1	20	82	0.005	60°
350-02008-0015	MT2C08-FM(1.5x1)	17.780	5	8	1.5x1	27	100	0.005	60°
350-03008-0015	MT3C08-FM(1.5x1)	23.825	5	8	1.5x1	33	125	0.005	60°
350-04008-0015	MT4C08-FM(1.5x1)	31.267	6.5	8	1.5x1	43	155	0.005	60°
350-04008-3015	MT4C08E30-FM(1.5x1)	31.267	6.5	8	1.5x1	76	185	0.005	60°

# 半邊凹陷型鎢鋼固定頂針

# TYPE:351

## HALF-SIDE FEMALE SOLID CENTERS OF CARBIDE TIPPED

A15



### 特性:

- (1)本體使用"S45C"之材質；經過熱處理。
- (2)本體及頂心經過精密研磨處理。
- (3)適用於車床及磨床等機械。
- (4)外徑斜度(Morse Taper)採用DIN806規格。

### Characteristics:

- (1)Body is made of "S45C" with heat treatment.
- (2)Body and Center is under precise grinding process.
- (3)Application to lathe and grinder.
- (4)Morse Taper complies with DIN806 standard.

單位:m/m

產品編號 STYLE No.	產品規格 MODEL No.	D	a	b	c	h	L1=L2	L	Co.精度 Accuracy	$\theta = \theta 1$
351-01006-0415	MT1C06-FM(1.5x1)	12.065	3.5	6	1.5x1	4	20	77	0.005	60°
351-02008-0515	MT2C08-FM(1.5x1)	17.780	5	8	1.5x1	5	27	96	0.005	60°
351-03008-0515	MT3C08-FM(1.5x1)	23.825	5	8	1.5x1	5	33	119	0.005	60°
351-04008-0515	MT4C08-FM(1.5x1)	31.267	6.5	8	1.5x1	5	43	152	0.005	60°



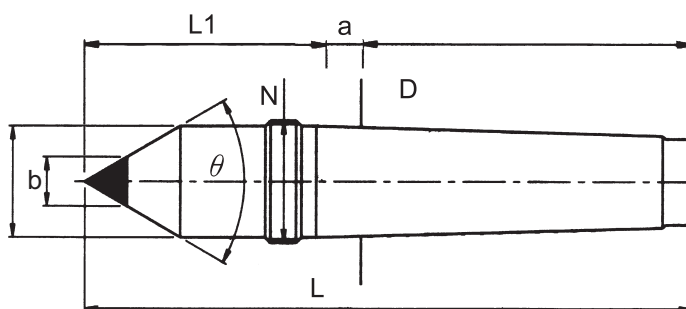
# 附螺母型鎢鋼固定頂針

# TYPE:355

## SOLID CENTERS OF CARBIDE TIPPED WITH DRAW-OFF NUT



A16



### 特性:

- (1) 本體使用"S45C"之材質；經過熱處理。
- (2) 本體及頂心經過精密研磨處理。
- (3) 適用於車床及磨床等機械。
- (4) 外徑斜度(Morse Taper)採用DIN806規格。

### Characteristics:

- (1) Body is made of "S45C" with heat treatment.
- (2) Body and Center is under precise grinding process.
- (3) Application to lathe and grinder.
- (4) Morse Taper complies with DIN806 standard.

單位:m/m

產品編號 STYLE No.	產品規格 MODEL No.	D	a	b	L1	L	N	Co.精度 Accuracy	$\theta = \theta 1$
355-02006-1600	MT2C06E16-N	17.780	5	6	47	116	M22x1.5	0.005	60°
355-03010-2700	MT3C10E27-N	23.825	5	10	66	152	M27x1.5	0.005	60°
355-03014-3000	MT3C14E30-N	23.825	5	14	67	155	M27x1.5	0.005	60°
355-04014-4100	MT4C14E41-N	31.267	6.5	14	87	196	M36x1.5	0.005	60°
355-04018-0700	MT4C18E07-N	31.267	6.5	18	53	162	M36x1.5	0.005	60°
355-04025-4100	MT4C25E41-N	31.267	6.5	25	97	206	M36x1.5	0.005	60°
355-04030-1500	MT4C30Full-170N	31.267	6.5	31.6	61	170	M36x1.5	0.005	60°

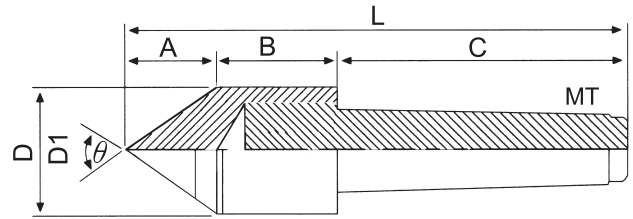
# 普及型迴轉頂針

# TYPE:500 & 501 & 502

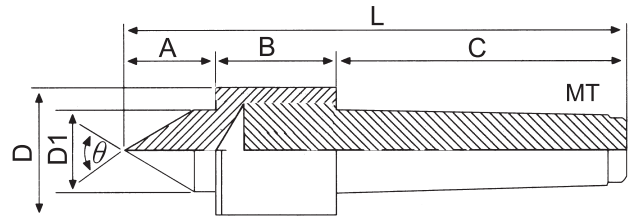
## LIVE CENTERS FOR LIGHT DUTY

### TYPE:500

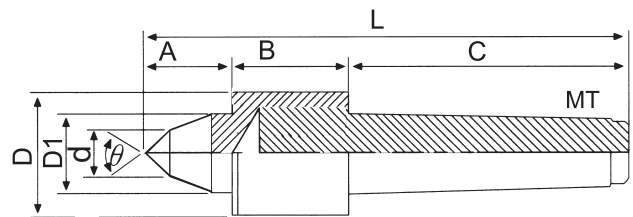
B1



### TYPE:501



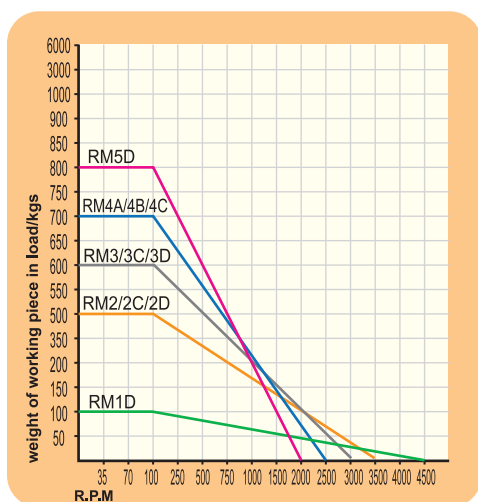
### TYPE:502



# 普及型迴轉頂針

# TYPE:500 & 501 & 502

## LIVE CENTERS FOR LIGHT DUTY



### 特性:

- (1)心軸及本體使用"合金鋼"之材質,經適當熱處理為(HRC60°±2°),具有高剛性。
- (2)此頂針使用滾珠軸承,止推軸承之組合。使用航太潤滑油脂,具防水性。
- (3)適用於輕負荷及複合車床等之加工切削。
- (4)RM\*C型:適用小工件使用之。

### Characteristics:

- (1)Center and Shaft is made of "Alloy Steel" The hardness after heat treatment (HRC60°±2°) with high rigidity.
- (2)Center is assembled with ball bearings and adopts lubricant grease with waterproof quality.
- (3)Applicable to light duty and copying lathes.
- (4)RM\*C type: It is suitable for small workpiece.

單位:m/m

產品編號 STYLE No.	產品規格 MODEL No.	A	B	C	D	D1	d	d1	L	Co.精度 Accuracy	Max. R.P.M	Max. Wt	θ
500-02000-0000	RM2 (MT2)	35	46	69	40	-	-	-	150	0.005	3500	500	60°
500-03000-0000	RM3 (MT3)	39	47	86	45	-	-	-	172	0.005	3000	600	60°
500-03010-0000	RM3-C10 (MT3)	39	47	86	45	-	-	10	172	0.005	3000	-	60°
500-04000-0000	RM4A (MT4)	39	47	108	45	-	-	-	194	0.005	2500	700	60°
501-01000-0000	RM1D (MT1)	21	31	56	32	16	-	-	108	0.005	4500	100	60°
501-02000-0000	RM2D (MT2)	24	46	69	40	20	-	-	139	0.005	3500	500	60°
501-03000-0000	RM3D (MT3)	39	57	108	52	40	-	-	204	0.005	3000	600	60°
501-04000-0000	RM4B (MT4)	39	57	108	52	40	-	-	204	0.005	2500	700	60°
501-05000-0000	RM5D (MT5)	50	62	136	68	45	-	-	248	0.005	2000	800	60°
502-02000-0000	RM2C (MT2)	32	46	69	40	21	8	-	147	0.005	3500	500	60°
502-03000-0000	RM3C (MT3)	35	51	86	45	25	14	-	172	0.005	3000	600	60°
502-04000-0000	RM4C (MT4)	35	51	108	45	25	14	-	194	0.005	2500	700	60°
502-04010-0000	RM4C-C10 (MT4)	35	51	108	45	25	-	10	194	0.005	2500	-	60°

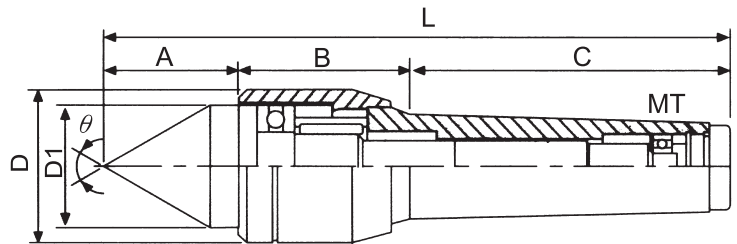
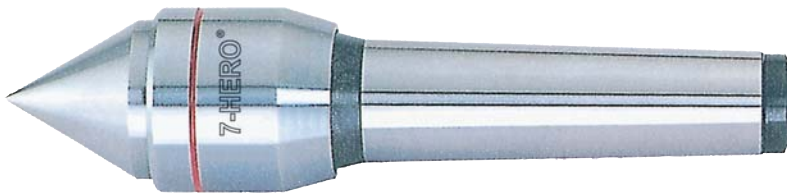
# 高精密型迴轉頂針

# TYPE:510 & 511

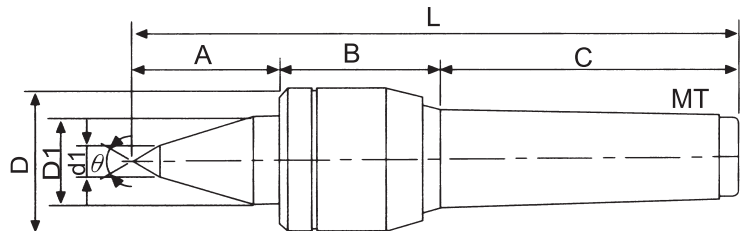
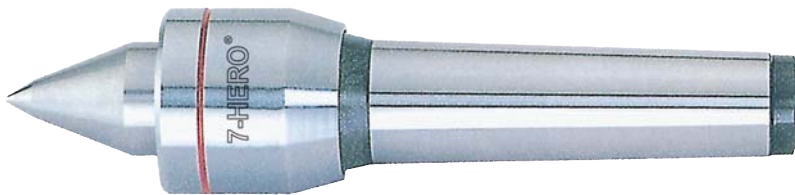
## LIVE CENTERS FOR HIGH PRECISION

B2

### TYPE:510



### TYPE:511



特殊規格 SPECIAL ORDER

鎢鋼 WITH CARBIDE TIPPED	
PCM-CX	PCM*C-CX

# 高精密型迴轉頂針

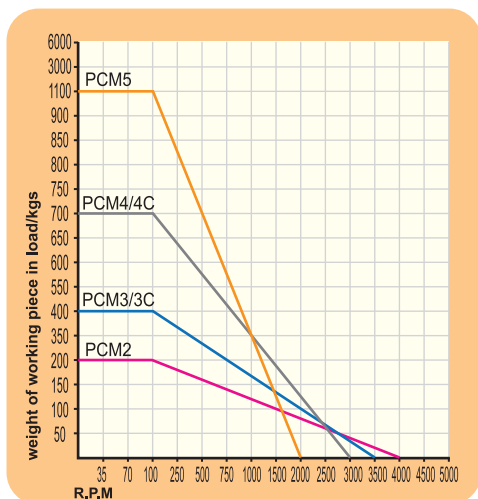
# TYPE:510 & 511

## LIVE CENTERS FOR HIGH PRECISION

B2

### 特性:

- (1)心軸及本體使用"合金鋼"之材質,經適當熱處理為(HRC60°±2°),具有高剛性,耐磨性。
- (2)此頂針使用止推軸承,滾針軸承及滾珠軸承之組合。使用航太潤滑油脂,具防水性。
- (3)適用於中負荷或中,高速車床等之加工切削。
- (4)PCM\*C型:適用小工件使用之。



### Characteristics:

- (1)Center shaft & Main body is made of "Alloy Steel" under heating treatment (HRC60°±2°) with high rigidity and wear-resistant quality.
- (2)Center is assembled with thrust ball bearing & needle roller bearings & ball bearings and adopts lubricant grease with waterproof quality.
- (3)Applicable to medium duty and medium or high-speed lathes processing or cutting.
- (4)RM\*C type: It is suitable for small workpiece.

單位:m/m

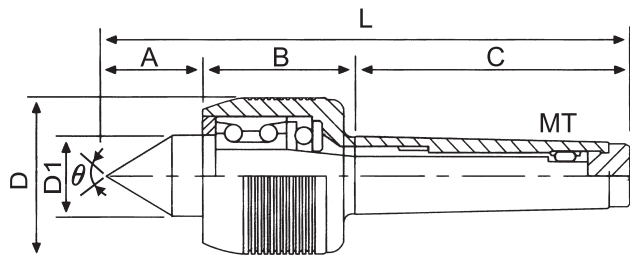
產品編號 STYLE No.	產品規格 MODEL No.	A	B	C	D	D1	d	d1	L	Co.精度 Accuracy	Max. R.P.M	Max. Wt	θ
510-02000-0000	PCM2 (MT2)	28	35	69	32	25	-	-	132	0.005	4000	200	60°
510-03000-0000	PCM3 (MT3)	36	44	86	41	35	-	-	166	0.005	3500	400	60°
510-04000-0000	PCM4 (MT4)	41	51	108	47	40	-	-	200	0.005	3000	700	60°
510-05000-0000	PCM5 (MT5)	54	72	136	65	52	-	-	262	0.005	2000	1100	60°
510-03010-0000	PCM3-C10 (MT3)	36	44	86	41	35	-	10	166	0.005	3500	-	60°
510-04012-0000	PCM4-C12 (MT4)	41	51	108	47	40	-	12	200	0.005	3000	-	60°
510-05018-0000	PCM5-C18 (MT5)	54	72	136	65	52	-	18	262	0.005	2000	-	60°
511-03000-0000	PCM3C (MT3)	46	44	86	41	25	10	-	176	0.005	3500	400	60°
511-04000-0000	PCM4C (MT4)	55	51	108	47	32	12	-	214	0.005	3000	700	60°
511-03010-0000	PCM3C-C10 (MT3)	46	44	86	41	25	-	10	176	0.005	3500	-	60°
511-04012-0000	PCM4C-C12 (MT4)	55	51	108	47	32	-	12	214	0.005	3000	-	60°

# 重切削迴轉頂針

TYPE:515

## LIVE CENTERS FOR HEAVY-DUTY

B3

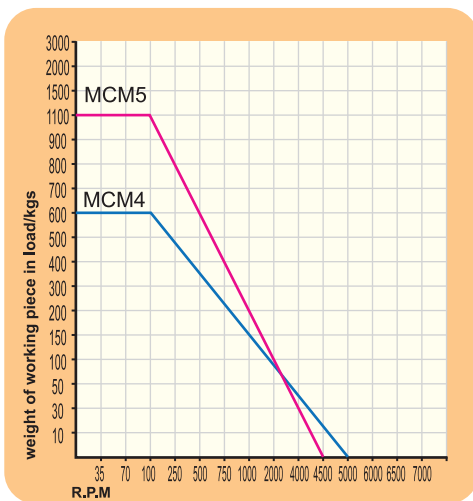


### 特性:

- (1)心軸使用"軸承鋼"之材質,經真空熱處理為(HRC60°±2°),具高剛性,耐磨性。
- (2)此頂針使用雙列斜角滾珠軸承,止推軸承,滾針軸承之組合。使用航太潤滑油脂,具防水性。
- (3)適用於高速,中負荷或NC車床之加工切削。

### Characteristics:

- (1)Center and shaft is made of "Bearing Steel" under heat treatment (HRC60°±2°) with high rigidity and wear-resistant quality.
- (2)Center is assembled with dual-row bevel ball bearings, thrust bearing, needle roller bearing, and adopts lubricant grease with waterproof quality.
- (3)Applicable to medium duty and high-speed CNC lathes processing or cutting.



單位:m/m

產品編號 STYLE No.	產品規格 MODEL No.	A	B	C	D	D1	d	L	Co.精度 Accuracy	Max. R.P.M	Max. Wt	$\theta$
515-04000-0000	MCM4 (MT4)	40	53	108	53	30	-	176	0.005	5000	600	60°
515-05000-0000	MCM5 (MT5)	48	61	136	68	35	-	214	0.005	4500	1100	60°

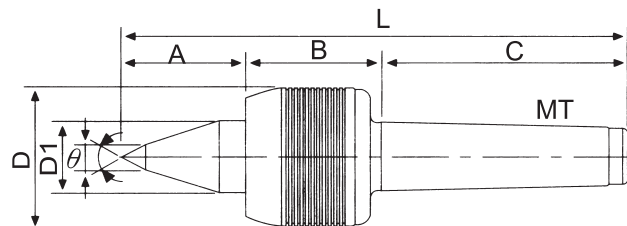
# 重切削迴轉頂針

TYPE:516

## LIVE CENTERS FOR HEAVY-DUTY



B4

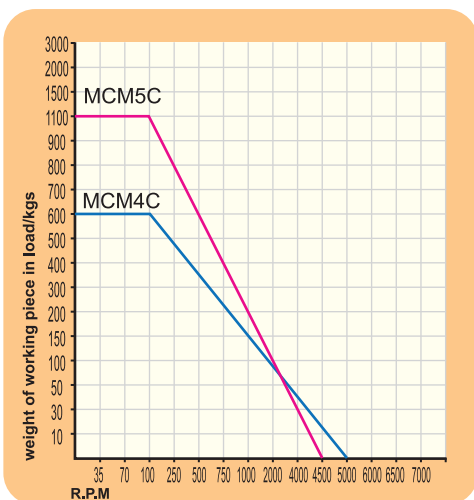


### 特性:

- (1)心軸使用"軸承鋼"之材質,經真空熱處理為(HRC60°±2°),具高剛性,耐磨性。
- (2)此頂針使用雙列斜角滾珠軸承,止推軸承,滾針軸承之組合。使用航太潤滑油脂,具防水性。
- (3)適用於高速,中負荷或NC車床之加工切削。
- (4)MCM\*C型,適用於小工件使用之。

### Characteristics:

- (1)Center and shaft is made of "Bearing Steel" under heat treatment (HRC60°±2°) with high rigidity and wear-resistant quality.
- (2)Center is assembled with dual-row bevel ball bearings, thrust bearing, needle roller bearing, and adopts lubricant grease with waterproof quality.
- (3)Applicable to medium duty and high-speed CNC lathes processing or cutting.
- (4)MCM\*C type: It is suitable for small workpiece.



單位:m/m

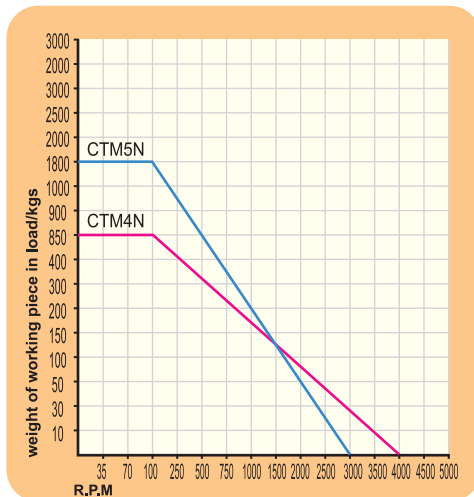
產品編號 STYLE No.	產品規格 MODEL No.	A	B	C	D	D1	d	L	Co.精度 Accuracy	Max. R.P.M	Max. Wt	θ
516-04000-0000	MCM4C (MT4)	48	53	108	53	30	12	209	0.005	5000	600	60°
516-05000-0000	MCM5C (MT5)	58	61	136	68	35	14	255	0.005	4500	1100	60°

# 附螺母型重切削迴轉頂針

# TYPE:518

## LIVE CENTERS FOR HEAVY-DUTY WITH DRAW-OFF NUT

B5



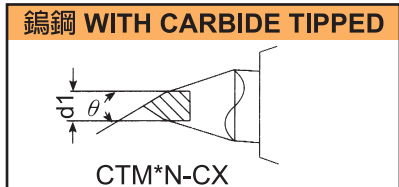
### 特性:

- (1)心軸使用"軸承鋼"之材質,經真空熱處理為(HRC60° ±2°),具高剛性,耐磨性。
- (2)此頂針使用雙列滾珠軸承,止推軸承,滾針軸承之組合。使用航太潤滑油脂,具防水性。
- (3)適用於中,重負荷或NC車床及高速車床之加工切削。
- (4)適用於小工件使用之。

### Characteristics:

- (1)Center and shaft is made of "Bearing Steel" under vacuum heat treatment (HRC60° ±2°) with high rigidity and wear-resistant quality.
- (2)Center is assembled with dual-row ball bearings, thrust bearing, needle roller bearing, and adopts lubricant grease with waterproof quality.
- (3)This type is enclosed with screw nut to be easily taken off.
- (4)It is suitable for small workpiece.

### 特殊規格 SPECIAL ORDER



單位:m/m

產品編號 STYLE No.	產品規格 MODEL No.	A	B	C	D	D1	d	d1	L	Co.精度 Accuracy	Max. R.P.M	Max. Wt	$\theta$	Draw-off Nut
518-04000-0000	CTM4N (MT4)	52	62	108	60	32	12	-	218	0.005	4000	850	60°	M60P1.5
518-05000-0000	CTM5N (MT5)	59	71	136	80	40	14	-	266	0.005	3000	1800	60°	M80P1.5
518-04012-0000	CTM4N-C12 (MT4)	52	62	108	60	32	-	12	218	0.005	4000	-	60°	M60P1.5
518-05018-0000	CTM5N-C18 (MT5)	59	71	136	80	40	-	18	266	0.005	3000	-	60°	M80P1.5



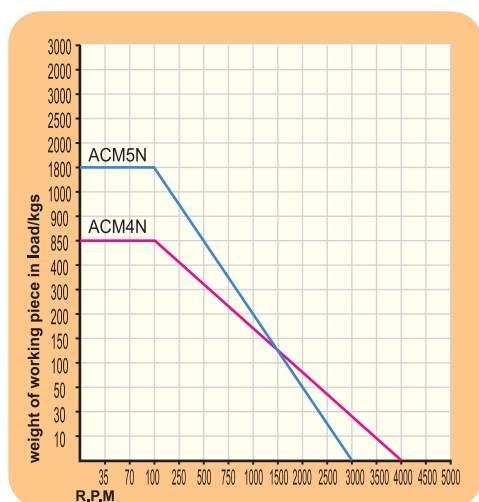
# 附螺母型重切削迴轉頂針

# TYPE:519

## LIVE CENTERS FOR HEAVY-DUTY WITH DRAW-OFF NUT



B6



### 特性:

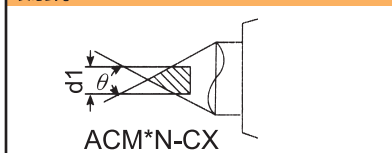
- (1)心軸使用"軸承鋼"之材質,經真空熱處理為(HRC60°±2°),具高剛性,耐磨性。
- (2)此頂針使用雙列滾珠軸承,止推軸承,滾針軸承之組合。使用航太潤滑油脂,具防水性。
- (3)適用於中,重負荷或NC車床及高速車床之加工切削。

### Characteristics:

- (1)Center and shaft is made of "Bearing Steel" under vacuum heat treatment (HRC60°±2°) with high rigidity and wear-resistant quality.
- (2)Center is assembled with dualball bearings, thrust bearing, needle roller bearing, and adopts lubricant grease with waterproof quality.
- (3)This type is enclosed with screw nut to be easily taken off.

### 特殊規格 SPECIAL ORDER

#### 鎢鋼 WITH CARBIDE TIPPED



單位:m/m

產品編號 STYLE No.	產品規格 MODEL No.	A	B	C	D	D1	d	d1	L	Co.精度 Accuracy	Max. R.P.M	Max. Wt	θ	Draw-off Nut
519-04000-0000	ACM4N (MT4)	42	62	108	60	32	-	-	208	0.005	4000	850	60°	M60P1.5
519-05000-0000	ACM5N (MT5)	49	71	136	80	40	-	-	256	0.005	3000	1800	60°	M80P1.5
519-04012-0000	ACM4N-C12 (MT4)	42	62	108	60	32	-	12	208	0.005	4000	-	60°	M60P1.5
519-05018-0000	ACM5N-C18 (MT5)	49	71	136	80	40	-	18	256	0.005	3000	-	60°	M80P1.5

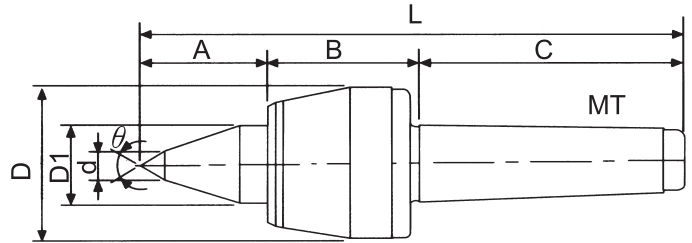
# 重切削迴轉頂針

# TYPE:520 & 521

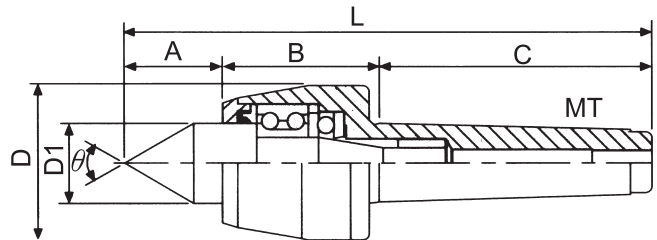
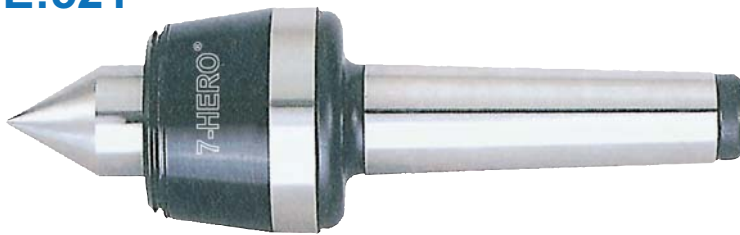
## LIVE CENTERS FOR HEAVY-DUTY

### TYPE:520

B7

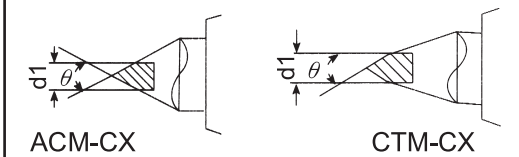


### TYPE:521



特殊規格 SPECIAL ORDER

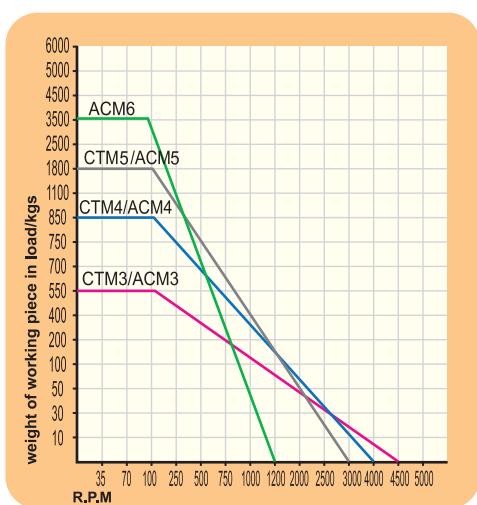
鎢鋼 WITH CARBIDE TIPPED



# 重切削迴轉頂針

# TYPE:520 & 521

## LIVE CENTERS FOR HEAVY-DUTY



### 特性:

- (1)心軸使用"軸承鋼"之材質,經真空熱處理為(HRC60° ±2°),具高剛性,耐磨性。
- (2)此頂針使用雙列滾珠軸承,止推軸承,滾針軸承之組合。使用航空潤滑油脂,具防水性。
- (3)適用於中,重負荷或NC車床及高速車床之加工切削。
- (4)CTM型:適用於小工件使用之。

### Characteristics:

- (1)Shaft is made of "Bearing Steel" under vacuum heat treatment (HRC60° ±2°) with high rigidity and wear-resistant quality.
- (2)Center is assembled with dual-row ball bearings, thrust bearing, needle roller bearing, and adopts lubricant grease with waterproof quality.
- (3)Applicable to medium and heavy duty or NC lathes and high-speed lathe processing or cutting.
- (4)CTM Type :It is suitable for small workpiece.

單位:m/m

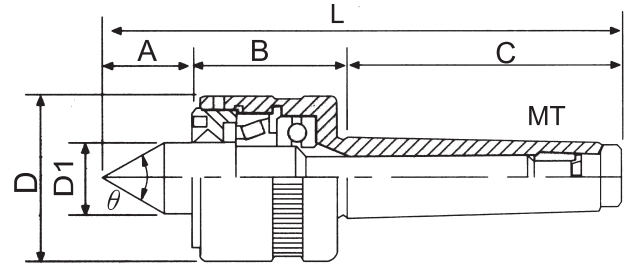
產品編號 STYLE No.	產品規格 MODEL No.	A	B	C	D	D1	d	d1	L	Co.精度 Accuracy	Max. R.P.M	Max. Wt	θ
520-03000-0000	CTM3 (MT3)	45	55	86	53	30	10	-	186	0.005	4500	550	60°
520-04000-0000	CTM4 (MT4)	52	62	108	63	32	12	-	218	0.005	4000	850	60°
520-05000-0000	CTM5 (MT5)	59	71	136	83	40	14	-	266	0.005	3000	1800	60°
520-03010-0000	CTM3-C10 (MT3)	45	55	86	53	30	-	-	186	0.005	4500	-	60°
520-04012-0000	CTM4-C12 (MT4)	52	62	108	63	32	-	10	218	0.005	4000	-	60°
520-05018-0000	CTM5-C18 (MT5)	59	71	136	83	40	-	12	266	0.005	3000	-	60°
521-03000-0000	ACM3 (MT3)	39	55	86	53	30	-	18	180	0.005	4500	550	60°
521-04000-0000	ACM4 (MT4)	42	62	108	63	32	-	-	208	0.005	4000	850	60°
521-05000-0000	ACM5 (MT5)	49	71	136	83	40	-	-	256	0.005	3000	1800	60°
521-06000-0000	ACM6 (MT6)	80	110	189	128	70	-	-	379	0.005	1200	3500	60°
521-03010-0000	ACM3-C10 (MT3)	39	55	86	53	30	-	10	180	0.005	4500	-	60°
521-04012-0000	ACM4-C12 (MT4)	42	62	108	63	32	-	12	208	0.005	4000	-	60°
521-05018-0000	ACM5-C18 (MT5)	49	71	136	83	40	-	18	256	0.005	3000	-	60°

# 重切削迴轉頂針 (圓錐形滾筒軸承)

# TYPE:522

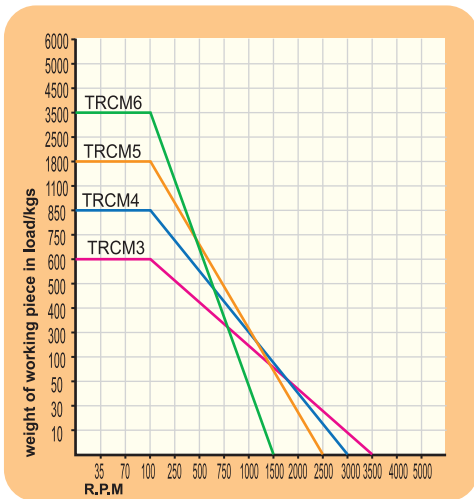
## LIVE CENTERS FOR HEAVY-DUTY (TAPER ROLLER BEARING)

B8



### 特性:

- (1)心軸使用"軸承鋼"之材質,經真空熱處理為(HRC60° ± 2°),具高剛性,耐磨性。
- (2)此頂針使用滾錐軸承,止推軸承,滾針軸承之組合。使用航太潤滑油脂,具防水性。
- (3)適用於中,重負荷之加工切削。



### Characteristics:

- (1)Shaft is made of "Bearing Steel" under vacuum heat treatment (HRC60° ± 2°) with high rigidity and wear-resistant quality.
- (2)Center is assembled with dual-row ball bearings, thrust bearing, needle roller bearing, and adopts lubricant grease with waterproof quality.
- (3)Applicable to medium and heavy duty load processing or cutting.

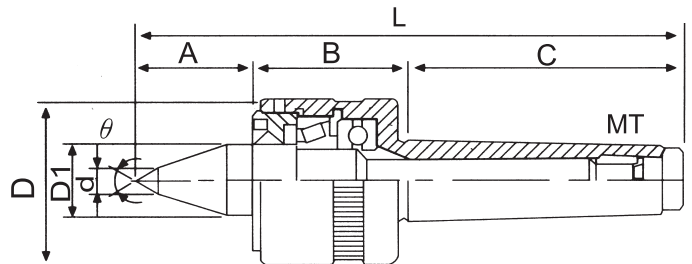
單位:m/m

產品編號 STYLE No.	產品規格 MODEL No.	A	B	C	D	D1	d	L	Co.精度 Accuracy	Max. R.P.M	Max. Wt	$\theta$
522-03000-0000	TRCM3 (MT3)	37	47	86	50	25	-	170	0.005	3500	600	60°
522-04000-0000	TRCM4 (MT4)	45	59	108	65	32	-	212	0.005	3000	850	60°
522-05000-0000	TRCM5 (MT5)	50	62	136	80	40	-	248	0.005	2500	1800	60°
522-06000-0000	TRCM6 (MT6)	66	85	189	128	60	-	333	0.005	1500	3500	60°

# 重切削迴轉頂針 (圓錐形滾筒軸承)

# TYPE:522

## LIVE CENTERS FOR HEAVY-DUTY (TAPER ROLLER BEARING)



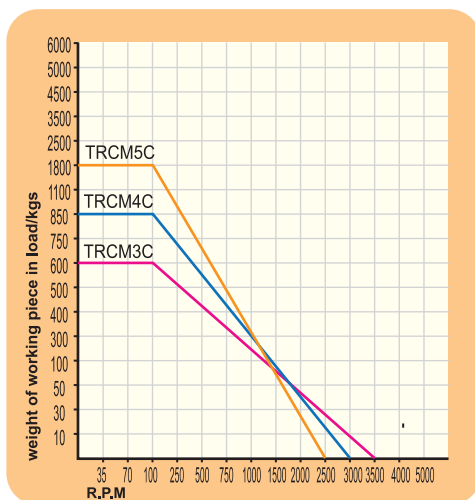
B8

### 特性:

- (1) 心軸使用"軸承鋼"之材質, 經真空熱處理為(HRC60° ±2°), 具高剛性耐磨性。
- (2) 此頂針使用滾錐軸承, 止推軸承, 滾針軸承之組合。使用航太潤滑油脂, 具防水性。
- (3) 適用於中, 重負荷之加工切削。
- (4) TRCM\*C型: 適用於小工件使用之。

### Characteristics:

- (1) Shaft is made of "Bearing Steel" under vacuum heat treatment (HRC60° ±2°) with high rigidity and wear-resistant quality.
- (2) Center is assembled with dual-row ball bearings, thrust bearing, needle roller bearing, and adopts lubricant grease with waterproof quality.
- (3) Applicable to medium and heavy duty load processing or cutting.
4. TRCM\*C Type : It is suitable used for small workpiece.



單位:m/m

產品編號 STYLE No.	產品規格 MODEL No.	A	B	C	D	D1	d	L	Co.精度 Accuracy	Max. R.P.M	Max. Wt	$\theta$
522-03100-0000	TRCM3C (MT3)	47	47	86	50	25	10	180	0.005	3500	600	60°
522-04100-0000	TRCM4C (MT4)	55	59	108	65	32	12	222	0.005	3000	850	60°
522-05100-0000	TRCM5C (MT5)	60	85	136	80	40	14	258	0.005	2500	1800	60°

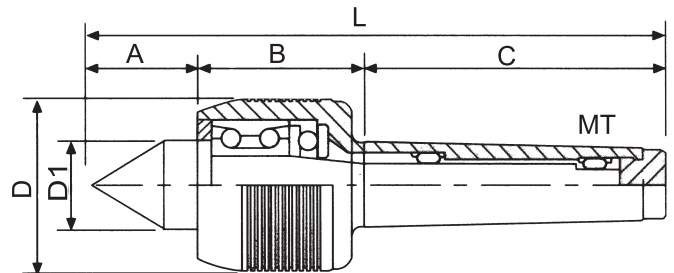
# 高速型重切削迴轉頂針

# TYPE:523 & 524

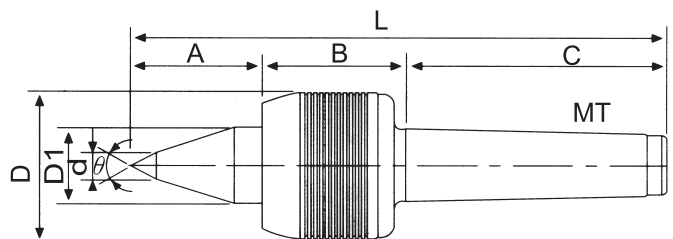
## LIVE CENTERS FOR HIGH-SPEED HEAVY-DUTY

### TYPE:523

B9

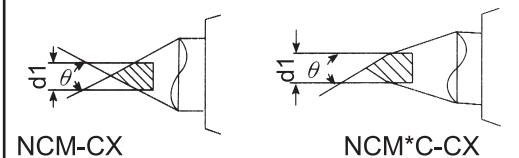


### TYPE:524



特殊規格 SPECIAL ORDER

鎢鋼 WITH CARBIDE TIPPED



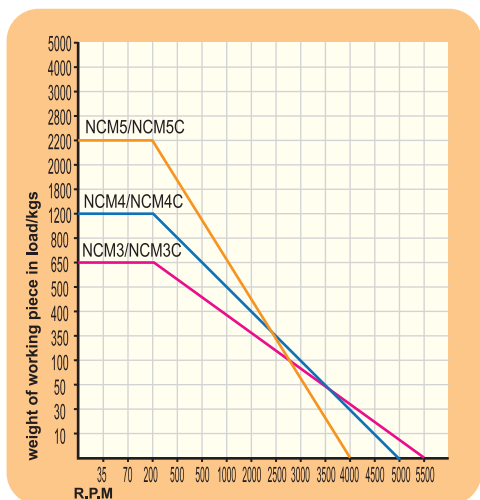
# 高速型重切削迴轉頂針

# TYPE:523 & 524

## LIVE CENTERS FOR HIGH-SPEED HEAVY-DUTY

### 特性:

- (1)心軸.本體使用"軸承鋼"之材質,經真空熱處理為(HRC60°±2°),具高剛性.耐磨性。
- (2)此頂針前端雙列斜角滾珠軸承及止推軸承,中端及後端由滾針軸承之組合。使用航太潤滑油脂.具防水性。
- (3)適用於重負荷.重推力或NC車床.高速及之加工切削。
- (4)NCM\*C型:適用於小工件使用之。



### Characteristics:

- (1)Center and shaft is made of "Bearing Steel" under vacuum heat treatment (HRC60°±2°) with high rigidity and wear-resistant quality.
- (2)Center is assembled with dual-row bevel ball bearings, thrust bearing, middle and rear ended needle ball bearing, and adopts lubricant grease with waterproof quality.
- (3)Applicable to heavy duty load, heavy thrust, or NC lathe, high-speed processing or cutting.
- (4)NCM\*C Type : It is suitable for small workpiece.

單位:m/m

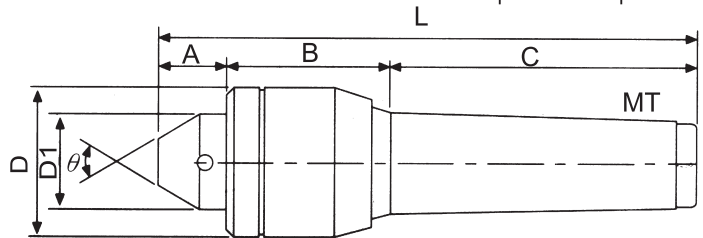
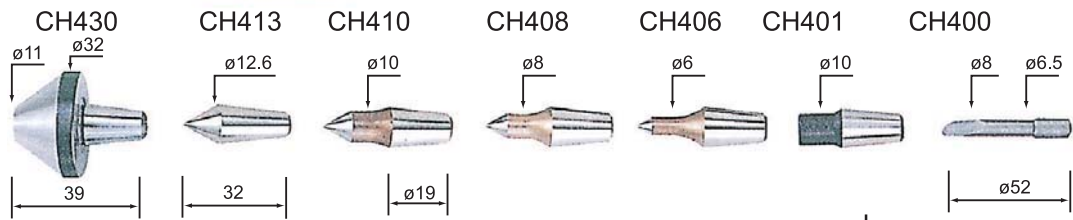
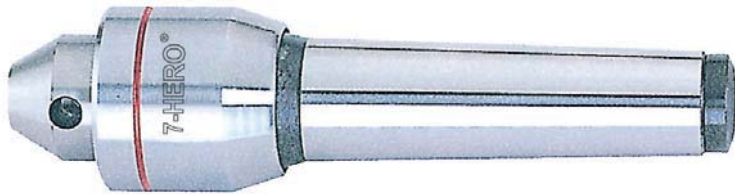
產品編號 STYLE No.	產品規格 MODEL No.	A	B	C	D	D1	d	d1	L	Co.精度 Accuracy	Max. R.P.M	Max. Wt	θ
523-03000-0000	NCM3 (MT3)	38	50	86	53	30	-	-	174	0.005	5500	650	60°
523-04000-0000	NCM4 (MT4)	45	60	108	68	32	-	-	213	0.005	5000	1200	60°
523-05000-0000	NCM5 (MT5)	52	70	136	87	40	-	-	258	0.005	4000	2200	60°
523-03010-0000	NCM3-C10 (MT3)	38	50	86	53	30	-	10	174	0.005	5500	-	60°
523-04014-0000	NCM4-C12 (MT4)	45	60	108	68	32	-	12	213	0.005	5000	-	60°
523-05018-0000	NCM5-C18 (MT5)	52	70	136	87	40	-	18	258	0.005	4000	-	60°
524-03000-0000	NCM3C (MT3)	52	50	86	53	25	10	-	188	0.005	5500	650	60°
524-04000-0000	NCM4C (MT4)	55	60	108	68	32	12	-	223	0.005	5000	1200	60°
524-05000-0000	NCM5C (MT5)	67	70	136	87	40	14	-	273	0.005	4000	2200	60°
524-03010-0000	NCM3C-C10 (MT3)	52	50	86	53	25	-	10	188	0.005	5500	-	60°
524-04012-0000	NCM4C-C12 (MT4)	55	60	108	68	32	-	12	223	0.005	5000	-	60°
524-05018-0000	NCM5C-C18 (MT5)	67	70	136	87	40	-	18	273	0.005	4000	-	60°

# 精密型互換式迴轉頂針

# TYPE:530

## EXCHANGEABLE LIVE CENTERS FOR PRECISION

B10

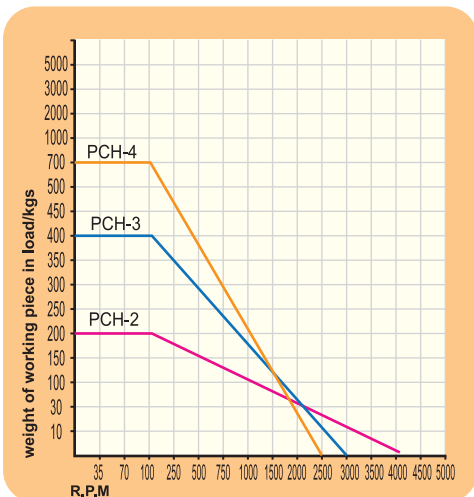


### 特性:

- (1)心軸及本體使用"合金鋼"之材質,經適當熱處理為(HRC60°±2°),具有高剛性。
- (2)此頂針使用止推軸承,滾針軸承及滾珠軸承之組合。使用航太潤滑油脂,具防水性。
- (3)適用於中負荷或中,高速車床等之加工切削。
- (4)可更換不同尺寸之頂心,便於加工工件。

### Characteristics:

- (1)Center and shaft is made of "Bearing Steel" under appropriate heat treatment (HRC60°±2°) with high rigidity.
- (2)Center is assembled with thrust bearing, needle ball bearing, and roller bearing, and adopts lubricant grease with waterproof quality.
- (3)Applicable to medium duty load, or high-speed lathe, etc. processing or cutting.
- (4)Center is exchangeable with different size, and is available for workpiece processing.



單位:m/m

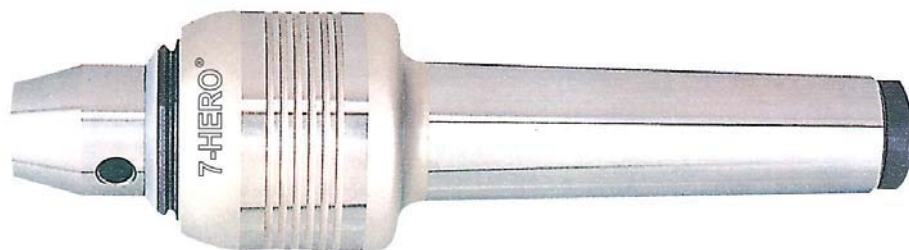
產品編號 STYLE No.	產品規格 MODEL No.	A	B	C	D	D1	L	Co.精度 Accuracy	Max. R.P.M	Max. Wt	$\theta$
530-02000-0000	PCH2 (MT2)	22	36	69	32	25	127	0.005	4000	200	60°
530-03000-0000	PCH3 (MT3)	23	44	86	41	30	153	0.005	3000	400	60°
530-04000-0000	PCH4 (MT4)	23	51	108	47	32	182	0.005	2500	700	60°



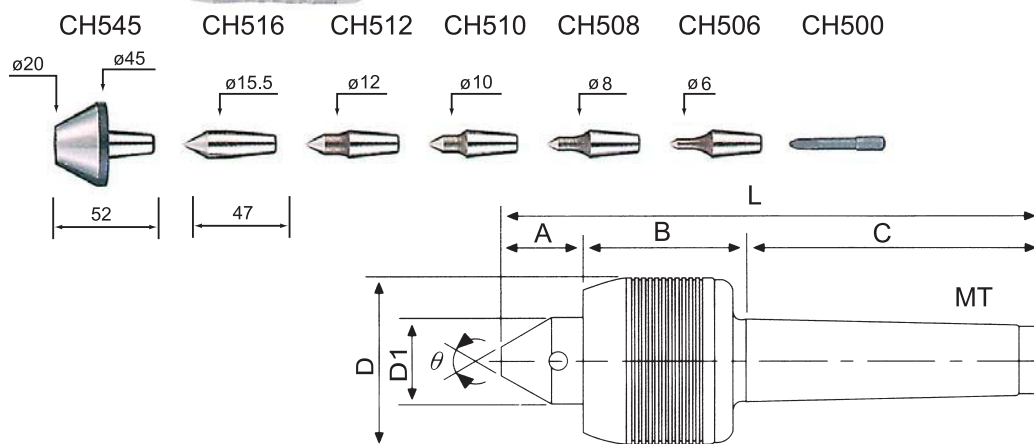
# 重切削互換式迴轉頂針

# TYPE:532

## EXCHANGEABLE LIVE CENTERS FOR HEAVY-DUTY



B11

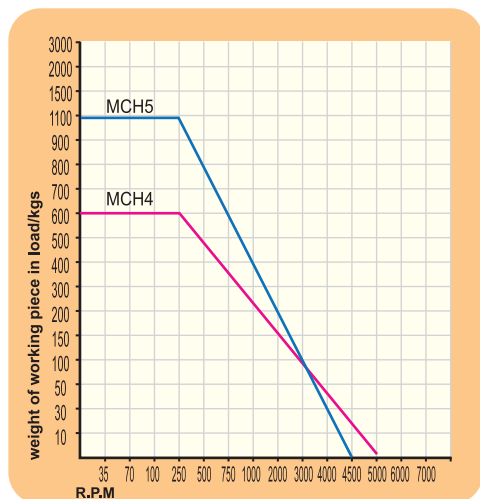


### 特性:

- (1)心軸使用"軸承鋼"之材質,經真空熱處理為(HRC60°±2°),具高剛性.耐磨性。
- (2)此頂針使用雙列斜角滾珠軸承.止推軸承.滾針軸承之組合。使用航太潤滑油脂.具防水性。
- (3)適用於高速.中負荷或NC車床之加工切削。
- (4)可更換不同尺寸之頂心,便於加工工件。

### Characteristics:

- (1)Shaft is made of "Bearing Steel" under vacuum heat treatment (HRC60°±2°) with high rigidity and wear-resistant quality.
- (2)Center is assembled with dual-row bevel ball bearing, thrust bearing, needle ball bearing, and adopts lubricant grease with waterproof quality.
- (3)Applicable to medium duty load, or high-speed lathe or NC lathe, etc. processing or cutting.
- (4)Center is exchangeable with different size, and is available for workpiece processing.



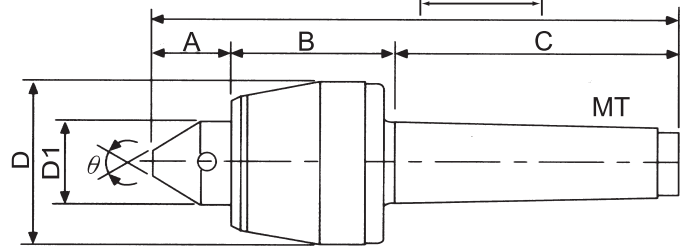
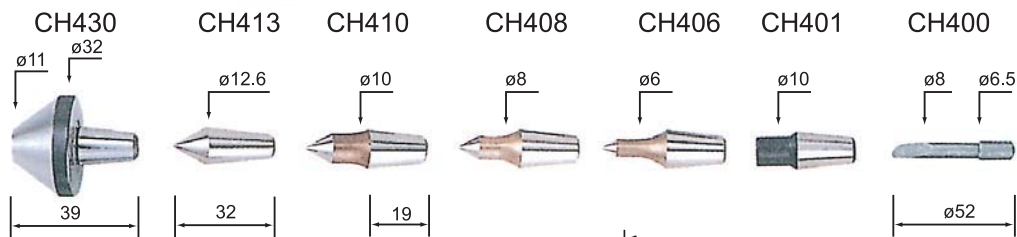
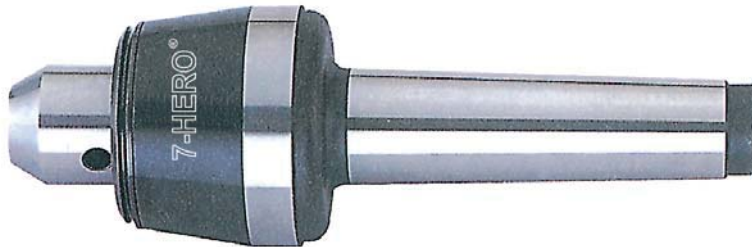
單位:m/m

產品編號 STYLE No.	產品規格 MODEL No.	A	B	C	D	D1	L	Co.精度 Accuracy	Max. R.P.M	Max. Wt	$\theta$
532-04000-0000	MCH4 (MT4)	36	53	108	53	30	197	0.005	5000	600	60°
532-05000-0000	MCH5 (MT5)	40	61	136	68	35	237	0.005	4500	1100	60°

# 重切削互換式迴轉頂針

# TYPE:535

## EXCHANGEABLE LIVE CENTERS FOR HEAVY-DUTY

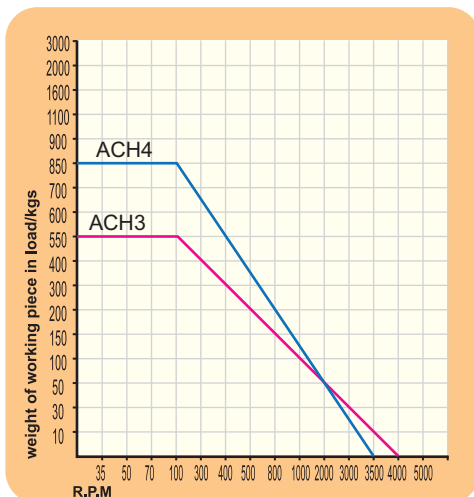


### 特性:

- (1)心軸使用"軸承鋼"之材質,經真空熱處理為(HRC60°±2°),具高剛性,耐磨性。
- (2)此頂針使用雙列斜角滾珠軸承,止推軸承,滾針軸承之組合。使用航太潤滑油脂,具防水性。
- (3)適用於高速,中負荷或NC車床之加工切削。
- (4)可更換不同尺寸之頂心,便於加工工件。

### Characteristics:

- (1)Shaft is made of "Bearing Steel" under vacuum heat treatment (HRC60°±2°) with high rigidity and wear-resistant quality.
- (2)Center is assembled with dual-row bevel ball bearing, thrust bearing, needle ball bearing, and adopts lubricant grease with waterproof quality.
- (3)Applicable to medium duty load, or high-speed lathe or NC lathe, etc. processing or cutting.
- (4)Center is exchangeable with different size, and is available for workpiece processing.



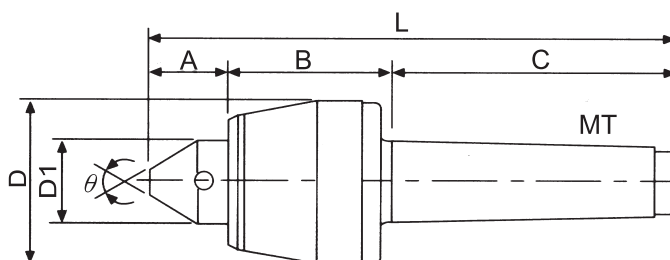
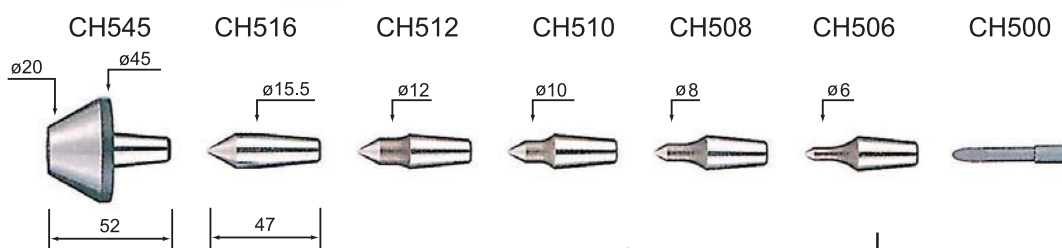
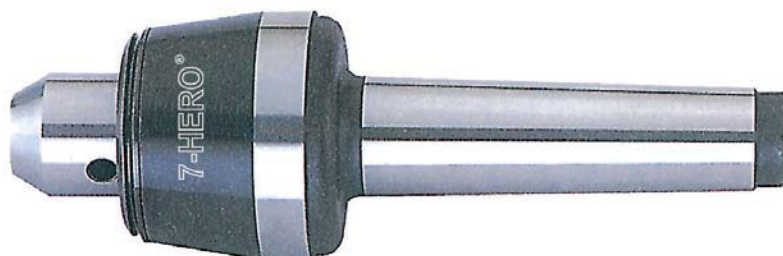
單位:m/m

產品編號 STYLE No.	產品規格 MODEL No.	A	B	C	D	D1	L	Co.精度 Accuracy	Max. R.P.M	Max. Wt	θ
535-03000-0000	ACH3 (MT3)	28	55	86	53	30	169	0.005	4000	550	60°
535-04000-0000	ACH4 (MT4)	30	62	108	63	32	200	0.005	3500	850	60°

# 重切削互換式迴轉頂針

# TYPE:536

## EXCHANGEABLE LIVE CENTERS FOR HEAVY-DUTY



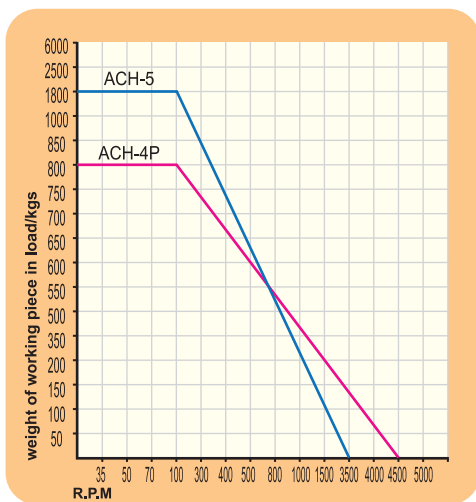
B13

### 特性:

- (1)心軸使用"軸承鋼"之材質,經真空熱處理為(HRC60° ± 2°),具高剛性.耐磨性。
- (2)此頂針使用雙列斜角滾珠軸承.止推軸承.滾針軸承之組合。使用航太潤滑油脂.具防水性。
- (3)適用於高速.中負荷或NC車床之加工切削。
- (4)可更換不同尺寸之頂心,便於加工工件。

### Characteristics:

- (1)Shaft is made of "Bearing Steel" under vacuum heat treatment (HRC60° ± 2°) with high rigidity and wear-resistant quality.
- (2)Center is assembled with dual-row bevel ball bearing, thrust bearing, needle ball bearing, and adopts lubricant grease with waterproof quality.
- (3)Applicable to medium duty load, or high-speed lathe or NC lathe, etc. processing or cutting.
- (4)Center is exchangeable with different size, and is available for workpiece processing.



單位:m/m

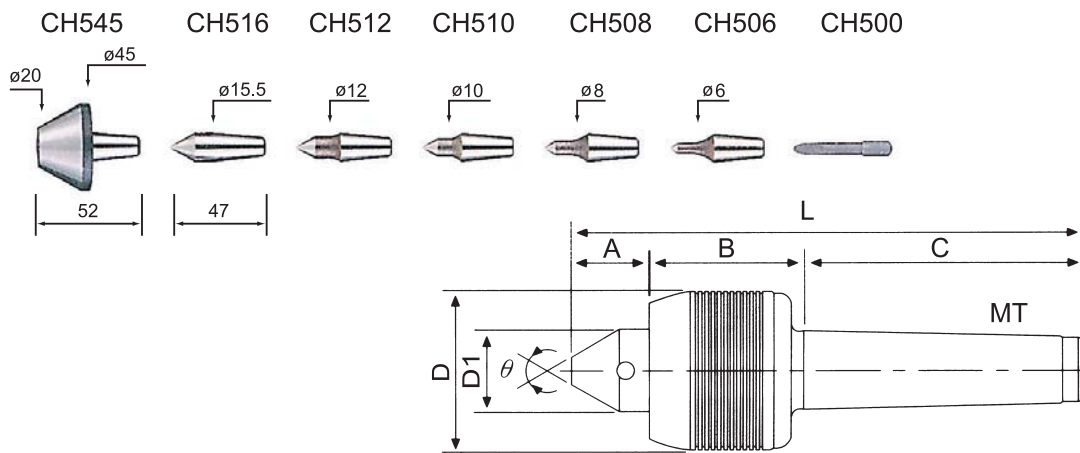
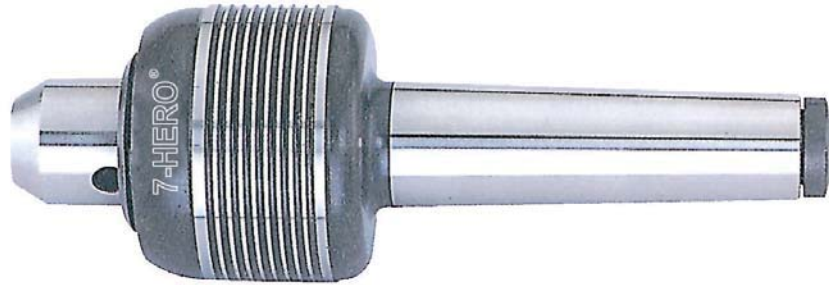
產品編號 STYLE No.	產品規格 MODEL No.	A	B	C	D	D1	L	Co.精度 Accuracy	Max. R.P.M	Max. Wt	θ
536-04000-0000	ACH4P (MT4)	30	62	108	63	32	200	0.005	4500	800	60°
536-05000-0000	ACH5 (MT5)	34	71	136	83	40	237	0.005	3000	1800	60°

# 高速型重切削互換式迴轉頂針

# TYPE:537

## EXCHANGEABLE LIVE CENTERS FOR HIGH-SPEED HEAVY-DUTY

B14

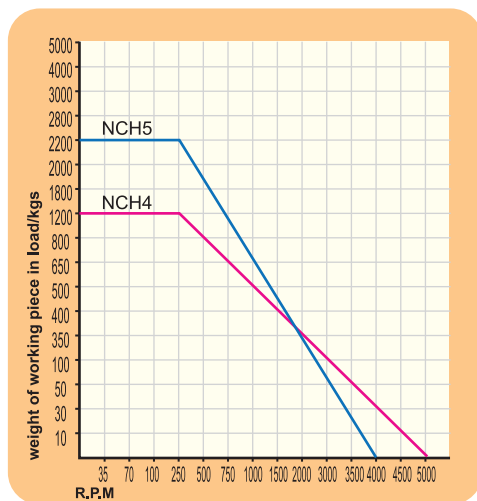


### 特性:

- (1)心軸使用"軸承鋼"之材質,經真空熱處理為(HRC60° ±2°),具高剛性.耐磨性。
- (2)此頂針使用雙列斜角滾珠軸承.止推軸承.滾針軸承之組合。使用航太潤滑油脂.具防水性。
- (3)適用於高速.中負荷或NC車床之加工切削。
- (4)可更換不同尺寸之頂心,便於加工工件。

### Characteristics:

- (1)Shaft is made of "Bearing Steel" under vacuum heat treatment (HRC60° ±2°) with high rigidity and wear-resistant quality.
- (2)Center is assembled with dual-row bevel ball bearing, thrust bearing, needle ball bearing, and adopts lubricant grease with waterproof quality.
- (3)Applicable to medium duty load, or high-speed lathe or NC lathe, etc. processing or cutting.
- (4)Center is exchangeable with different size, and is available for workpiece processing.



單位:m/m

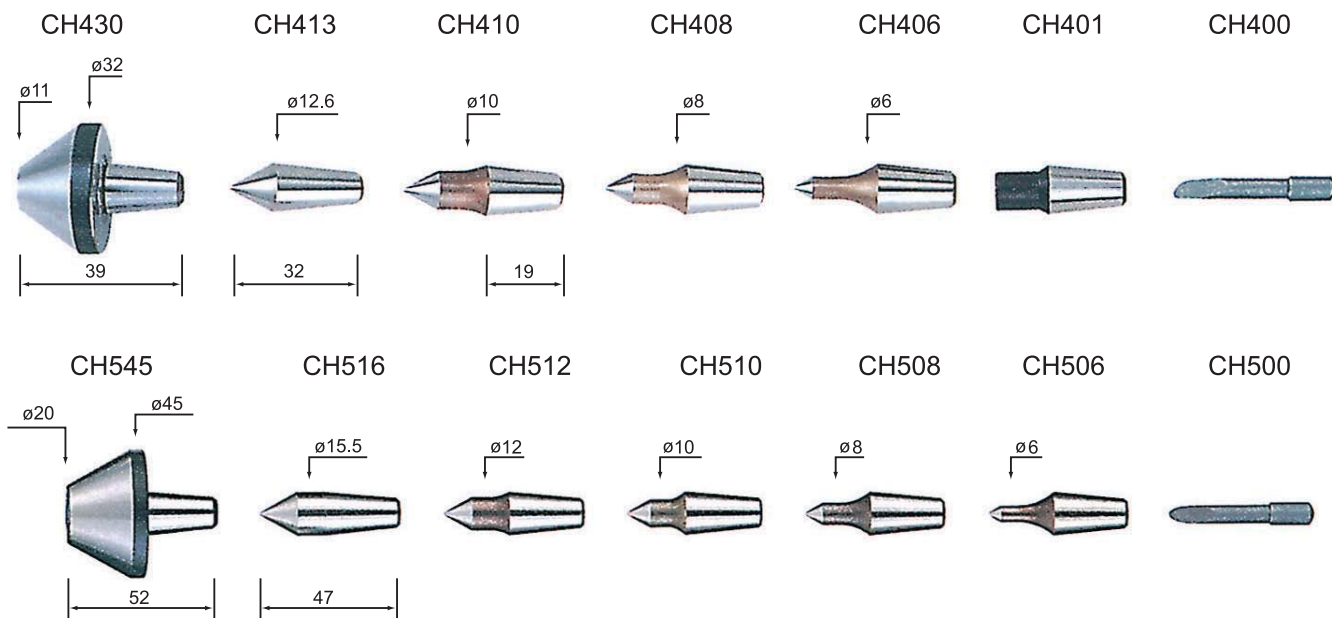
產品編號 STYLE No.	產品規格 MODEL No.	A	B	C	D	D1	L	Co.精度 Accuracy	Max. R.P.M	Max. Wt	θ
537-04000-0000	NCH4 (MT4)	35	60	108	68	32	203	0.005	5000	1200	60°
537-05000-0000	NCH5 (MT5)	37	70	136	87	40	143	0.005	4000	2200	60°

# 互換式頂心

# TYPE:540 & 541

## EXCHANGEABLE INSERTS

B15



### 特性:

此頂針頂心使用"SKD"之材質,經真空熱處理為(HRC60°±2°),具耐磨性。

### Characteristics:

Center is made of "SKD" material under vacuum heat treatment (HRC60°±2°) with wear-resistant quality.

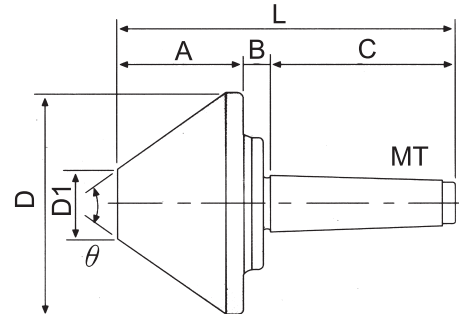
單位:m/m

產品編號 STYLE No.	產品規格 MODEL No.	D	Co.精度 Accuracy	$\theta$	備註用途
540-10400-0000	CH400	-	0.005	60°	PCH2 PCH3 PCH4 ACH3 ACH4
540-10401-0000	CH401	-	0.005	60°	
540-10406-0600	CH406	6	0.005	60°	
540-10408-0800	CH408	8	0.005	60°	
540-10410-1000	CH410	10	0.005	60°	
540-10413-1300	CH413	12.6	0.005	60°	
540-10430-3000	CH430	30	0.005	60°	
541-10500-0000	CH500	-	0.005	60°	ACH4P ACH5 MCH4 MCH5 NCH4 NCH5
541-10506-0600	CH506	6	0.005	60°	
541-10508-0800	CH508	8	0.005	60°	
541-10510-1000	CH510	10	0.005	60°	
541-10512-1200	CH512	12	0.005	60°	
541-10516-1600	CH516	15.7	0.005	60°	
541-10545-4500	CH545	45	0.005	60°	

# 強力型傘形頂針

# TYPE:550

## BEVEL ROLLING CENTERS FOR HEAVY-DUTY



B16

### 特性:

- (1)本體及心軸使用鉻鉬鋼之材質,經過真空熱處理,具有高剛性及耐磨性。其頂心頭使用"合金鋼"之材質,經過熱處理具耐磨性。
- (2)此頂針使用雙列滾珠軸承及止推軸承,滾針軸承之組合;採用航太潤滑油脂,具耐磨性及防水功能。
- (3)應用於大孔徑加工。

### Characteristics:

- (1)Bull nose center head is made of "Cr-Mo Steel" under heat treatment (HRC60 $\pm$ 2 $^{\circ}$ ) with wear-resistant quality.
- (2)Center is assembled with cone roller bearing and roller bearing, and adopts lubricant grease with waterproof design.
- (3)Applicable to larger bore processing.
- (4>Loading (Wt) is counted complying with (R.P.M.=100).

單位:m/m

產品編號 STYLE No.	產品規格 MODEL No.	A	B	C	D	D1	L	Co.精度 Accuracy	Max. R.P.M	Max. Wt	$\theta$
550-02050-0260	MT2C-50-12-60 $^{\circ}$	42	22	69	50	12	133	0.005	4000	200	60 $^{\circ}$
550-02063-0260	MT2A-63-12-60 $^{\circ}$	46	17	69	63	12	132	0.005	4000	200	60 $^{\circ}$
550-02078-0370	MT2-78-15-70 $^{\circ}$	52	18	69	78	15	139	0.005	3300	400	70 $^{\circ}$
550-03050-0260	MT3E-50-12-60 $^{\circ}$	42	22	86	50	12	150	0.005	4000	200	60 $^{\circ}$
550-03063-0260	MT3C-63-12-60 $^{\circ}$	46	17	86	63	12	149	0.005	4000	200	60 $^{\circ}$
550-03078-0370	MT3A-78-15-70 $^{\circ}$	52	18	86	78	15	156	0.005	3300	400	70 $^{\circ}$
550-03106-0475	MT3-106-25-75 $^{\circ}$	59	16	86	106	25	161	0.005	3000	500	75 $^{\circ}$
550-03128-0575	MT3B-128-40-75 $^{\circ}$	73	12	86	128	40	171	0.005	2000	650	75 $^{\circ}$
550-04050-0260	MT4H-50-12-60 $^{\circ}$	42	22	108	50	12	172	0.005	4000	200	60 $^{\circ}$
550-04063-0260	MT4F-63-12-60 $^{\circ}$	46	17	108	63	12	171	0.005	4000	200	60 $^{\circ}$
550-04078-0370	MT4C-78-15-70 $^{\circ}$	52	18	108	78	15	178	0.005	3300	400	70 $^{\circ}$
550-04106-0475	MT4A-106-25-75 $^{\circ}$	59	16	108	106	25	183	0.005	3000	500	75 $^{\circ}$
550-04128-0575	MT4-128-40-75 $^{\circ}$	73	12	108	128	40	193	0.005	2000	650	75 $^{\circ}$
550-04156-0675	MT4B-156-45-75 $^{\circ}$	88	12	108	156	45	208	0.005	1900	800	75 $^{\circ}$
550-04178-0775	MT4D-178-57-75 $^{\circ}$	91	12	108	178	80	211	0.005	1700	1000	75 $^{\circ}$
550-04206-0875	MT4E-206-81-75 $^{\circ}$	98	12	108	206	80	218	0.005	1500	1300	75 $^{\circ}$
550-04258-1075	MT4G-258-92-75 $^{\circ}$	107	13	108	258	92	228	0.005	1200	2000	75 $^{\circ}$
550-05078-0370	MT5E-78-15-70 $^{\circ}$	52	18	136	78	15	206	0.005	3300	400	70 $^{\circ}$
550-05106-0475	MT5C-106-25-75 $^{\circ}$	59	16	136	106	25	211	0.005	3000	500	75 $^{\circ}$
550-05128-0575	MT5A-128-40-75 $^{\circ}$	73	12	136	128	40	221	0.005	2000	650	75 $^{\circ}$
550-05156-0675	MT5-156-45-75 $^{\circ}$	88	12	136	156	45	236	0.005	1900	800	75 $^{\circ}$
550-05178-0775	MT5B-178-57-75 $^{\circ}$	91	12	136	178	80	239	0.005	1700	1000	75 $^{\circ}$
550-05206-0875	MT5D-206-81-75 $^{\circ}$	98	12	136	206	80	246	0.005	1500	1600	75 $^{\circ}$
550-05258-1075	MT5F-258-92-75 $^{\circ}$	107	13	136	258	92	256	0.005	1200	2200	75 $^{\circ}$
550-05306-1290	MT5H-306-120-90 $^{\circ}$	107	30	136	306	120	273	0.005	1000	3000	90 $^{\circ}$
550-06128-0575	MT6C-128-40-75 $^{\circ}$	73	12	190	128	40	275	0.005	2000	650	75 $^{\circ}$
550-06156-0675	MT6A-156-45-75 $^{\circ}$	88	12	190	156	45	290	0.005	1900	800	75 $^{\circ}$
550-06178-0775	MT6-178-57-75 $^{\circ}$	91	12	190	178	80	293	0.005	1700	1000	75 $^{\circ}$
550-06206-0875	MT6B-206-81-75 $^{\circ}$	98	12	190	206	80	300	0.005	1500	2000	75 $^{\circ}$
550-06258-1075	MT6D-258-92-75 $^{\circ}$	107	13	190	258	92	310	0.005	1200	2500	75 $^{\circ}$
550-06306-1290	MT6H-306-120-90 $^{\circ}$	107	13	190	258	92	310	0.005	1000	3000	90 $^{\circ}$

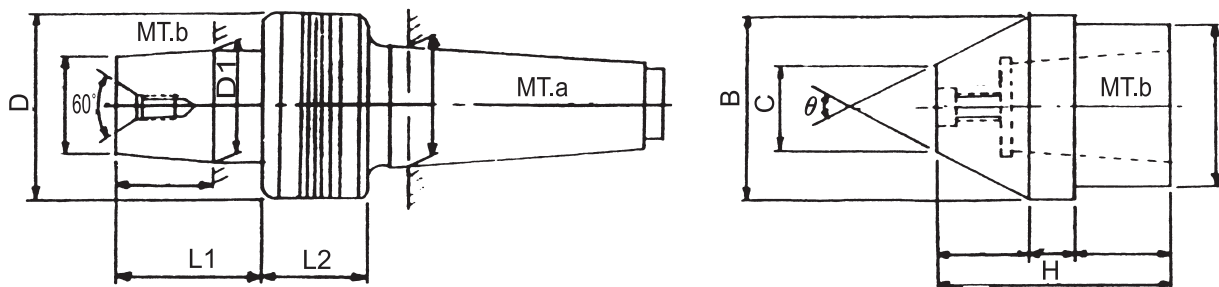
# 互換式傘形頂針

# TYPE:551

## EXCHANGEABLE LIVE CENTERS FOR BULL NOSE



B17



### 特性:

- (1) 本體及心軸使用SUJ2之材質,經過真空熱處理,具有高剛性及耐磨性。其頂心頭使用"合金鋼"之材質,經過熱處理具耐磨性。
- (2) 此頂針使用雙列滾珠軸承及止推軸承滾針軸承之組合;採用航太潤滑油脂,具耐磨性及防水功能。
- (3) 應用於高速迴轉方面。

### Characteristics:

- (1) Center and shaft is made of "SUJ2" under vacuum heat treatment with high rigidity and wear-resistant quality. Center head is made of "Alloy Steel" under heat treatment with wear-resistance.
- (2) Center is assembled with dual-row ball bearing, thrust bearing, and needle ball bearing, and adopts lubricant grease with wear-resistant and waterproof design.
- (3) Applicable to high-speed rolling.

### ■ 本體:

單位:m/m

產品編號 STYLE No.	產品規格 MODEL No.	MT.a	D	L1	L2	Co.精度 Accuracy	g
551-04000-0001	NCF4	4	62	36	33	0.005	M6x1

### ■ 頂錐頭:

單位:m/m

產品編號 STYLE No.	產品規格 MODEL No.	MT.b	B	C	H	Co.精度 Accuracy	θ	g
551-04000-5018	NCF-50-18-70°	4	50	18	52	0.005	70°	M8x1.25
551-04000-6518	NCF-65-18-70°	4	65	18	52	0.005	70°	
551-04000-7518	NCF-75-18-70°	4	75	18	59	0.005	70°	

# 調整式傳動頂針

# TYPE:560

## ADJUSTABLE TRANSMISSION CENTER



C1

### 特性:

- (1) 頂針及輔助桿使用"高速鋼"之材質;經熱處理為(HRC63°~64°),具有耐磨性
- (2) 頂針內部使用彈簧、優力膠之組合,增加其耐用性且維修便利。
- (3) 適用於端面不平整之工件,透過其輔助桿調整受力點,使工件便於加工。
- (4) 適用車床、CNC車床之加工。

### Characteristics:

- (1) Center and auxiliary bar is made of "High-Speed Steel" under heat treatment (HRC 63°~64°) with wear-resistant quality.
- (2) Center's interior is use to spring and Urelene to increase its durability and convenience for repair.
- (3) Application to uneven ended workpiece, and getting through the auxiliary bar to adjust the thrust point for convenient processing.
- (4) Application to the lathe and CNC lathe.

單位:m/m

產品編號 STYLE No.	產品規格 MODEL No.	工件範圍 Working Range	中心頂針 Center Shaft Size	輔助桿數 Aux.
560-03000-3100	TC3103-HD31 (MT3)	10~25	ø5	5
560-04000-3100	TC3104-HD31 (MT4)			
560-03000-3200	TC3203-HD32 (MT3)	15~45	ø9	5
560-04000-3200	TC3204-HD32 (MT4)			
560-05000-3200	TC3205-HD32 (MT5)			
560-04000-3300	TC3304-HD33 (MT4)	25~60	ø14	6
560-05000-3300	TC3305-HD33 (MT5)			
560-04000-3400	TC3404-HD34 (MT4)	40~80	ø18	6
560-05000-3400	TC3405-HD34 (MT5)			





### 特性:

- (1)頂針使用"工具鋼"之材質;經深冷熱處理為(HRC60° ±2°) , 具有耐磨性。
- (2)此頂針內部使用強力彈簧,增加其耐用性且維修便利。
- (3)適用車床、滾齒機之加工。

### Characteristics:

- (1)Body & Center is made of "Tool Steel" under deep cold and heat treatment (HRC60° ± 2°) with wear-resistant quality.
- (2)Center's interior is to use of powerful spring to increase its durability and convenience for repair.
- (3)Applicable to the lathe and hobbing machine.

單位:m/m

產品編號 STYLE No.	產品規格 MODEL No.	工件範圍 Working Range	中心頂針 Center Shaft Size	D	齒數
561-04015-1606	CDK-15-ø6 (MT4)	16~25	ø6	ø16	6
561-04023-2308	CDK-23-ø8 (MT4)	23~32	ø8	ø23	6
561-04032-3208	CDK-32-ø8 (MT4)	32~45	ø8	ø32	8
561-04032-3214	CDK-32-ø14 (MT4)	32~45	ø14	ø32	8

# 調整式錐坑倒角刀

# TYPE:052

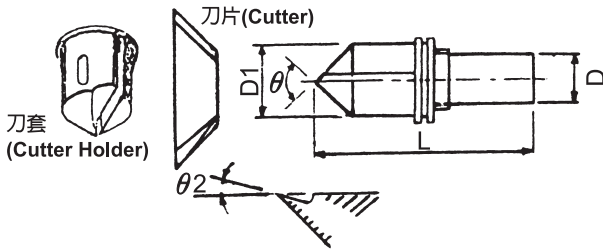
## COUNTERSINKER CHAMFERING TOOLS



### 特性:

- (1)操作既安全,具有降低成本提高效率之功能。
- (2)刀片易於換取和研磨之功能。
- (3)隨加工材質不同而更換刀片型式之功能。
- (4)具有調整特色及輔助刀具對準加工物中心之功能。
- (5)其內部特殊裝置以消除刀具和工件接觸時之振動,使其提高加工平面光滑之功能。
- (6)調整刀片時,須先注意其刀刃比被壓縮後刀套中心點高出 0.2mm~0.5mm之間,若過高易產生鈍刀現象。(可目測或用量具量測得知)
- (7)適合錐坑倒角,應用於銑床.鑽床.手提電鑽等機械工具。

D1



### Characteristics:

- (1)Easy and safe to operate, and lower the production cost to increase the operating performance.
- (2)Cutter is easily replaced and accessed, and it functions for grinding.
- (3)Cutter is replaceable according to different materials for processing.
- (4)Has adjustable function to support tool aiming at center of workpiece for processing purpose.
- (5)Inside special device to eliminate the vibration created by touch between tool and workpiece, and it upgrades for high surface smoothness while in processing.
- (6)When cutter is adjusted, be sure to notice first its edge shall be higher than center at 0.2mm, 0.5mm. If over high, then a dull condition appears easily. (Height or distance can be seen by sight or measured by measuring unit.)
- (7)Suitable for countersinks processing, and applicable to miller, driller, and portable electrical drilling machine, etc. tools.

倒角角度 $\theta 1$ Chamfer	傾斜角度 $\theta 2$ Rank Angle	適用材質 Material
60° 82° 90° 120°	0°	鑄鐵
		黃銅
	14°	軟鐵
		硬鐵
		青銅
		碳鋼
20°	白鐵	
	鋁合金 可塑性材質	

### 刀套(Cutter Holder)

單位:m/m

產品編號 STYLE No.	產品規格 MODEL No.	$\theta 1$
052-01800-3001	CS-18-90°	90°
052-02500-3001	CS-25-90°	90°
052-04200-3001	CS-42-90°	90°

### 刀片(Cutter)

產品編號 STYLE No.	產品規格 MODEL No.	$\theta 1$	$\theta 2$	表面處理 Surface Treatment	備註
052-01801-3202	CS-18T-90°-14°	90°	14°	鍍鈦 Coated	單刃
052-02501-3202	CS-25T-90°-14°	90°	14°	鍍鈦 Coated	雙刃
052-04201-3202	CS-42T-90°-14°	90°	14°	鍍鈦 Coated	雙刃

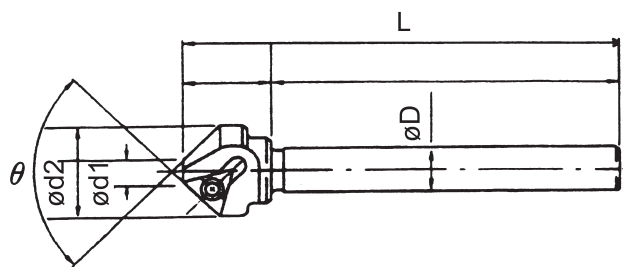
單位:m/m

產品編號 STYLE No.	產品規格 MODEL No.	D	範圍 Cutting Capacity D1	L	$\theta 1$	$\theta 2$
052-01810-3200	CS-18-2-ST10-90°-14°	ø10	2.0~18.0	85	90°	14°
052-02512-3200	CS-25-2-ST12-90°-14°	ø12	2.0~25.0	95	90°	14°
052-04202-3200	CS-42-2-MT2-90°-14°	MT2	2.0~42.0	195	90°	14°
052-04212-3200	CS-42-2-ST12-90°-14°	ø12	2.0~42.0	165	90°	14°
052-04216-3200	CS-42-2-ST16-90°-14°	ø16	2.0~42.0	165	90°	14°

# 捨棄式倒角刀

# TYPE:053

## THROW-AWAY CHAMFERING TOOLS



D2

### 特性:

- (1) 刀具設計獨特。倒角效果特佳,加工時不會有滯刀現象,加工面更平滑。
- (2) 採用捨棄式刀片,取得及更換容易,且不需研磨,可降低成本。
- (3) 任何型式之工具機適用,使用範圍廣。

### Characteristics:

- (1) Special design of tool with excellent counter sinks, and no dull condition when in processing, and keeps processing surface more smooth.
- (2) Adopts of disposable cutter for easy and access replacement, and needless to be ground to lower the production cost.
- (3) Applicable to all types of the tool machine for wide range of application.

產品編號 STYLE No.	產品規格 MODEL No.
053-12001-1600	C1603P(TPMT160304)
053-12001-1601	C1603P(TPGT160304)

單位:m/m

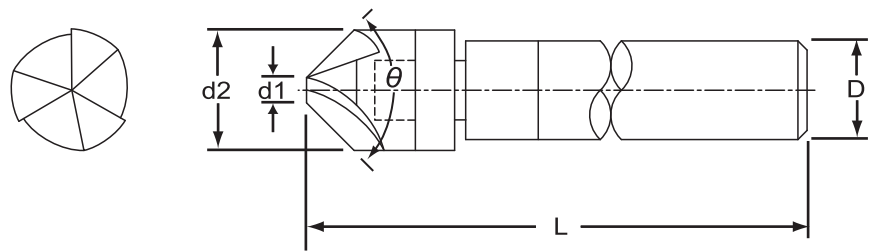
產品編號 STYLE No.	產品規格 MODEL No.	ØD	範圍 Cutting Capacity ød1~ød2	L	θ
053-12002-2006	ST12-C0620-60°	ø12	ø6~ø20	80	60°
053-12002-2506	ST12-C0625-90°	ø12	ø6~ø25	113	90°
053-12002-4020	ST12-C2040-90°	ø12	ø20~ø40	113	90°

# 鎢鋼焊接式倒角刀

## CARBIDE HEAD CHAMFERING TOOLS



D3

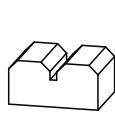


單位:m/m

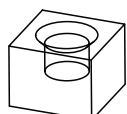
產品編號 STYLE No.	產品規格 Model No.	尺寸 Dimensions		倒角範圍 Cutting Capacity		$\theta$	刃數 Edges
		D	L	d1	d2		
054-10003-1203	ST10-CKEM12-3T-90°	10	60	2.80	12	90°	3
054-10003-1604	ST10-CKEM16-3T-90°	10	64	3.20	16	90°	3
054-10003-2004	ST12-CKEM20-3T-90°	12	56	3.50	20	90°	3
054-10003-2504	ST12-CKEM25-3T-90°	12	74	3.80	25	90°	3

# 捨棄式倒角刀

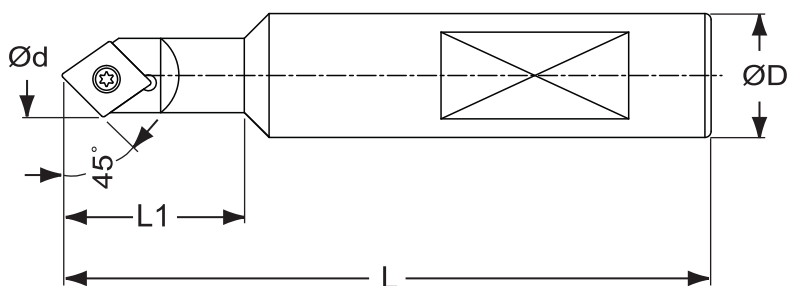
## THROW-AWAY CHAMFERING TOOLS



倒角加工



小孔倒角



D4

### 捨棄式倒角刀 (THROW-AWAY CHAMFERING TOOLS)

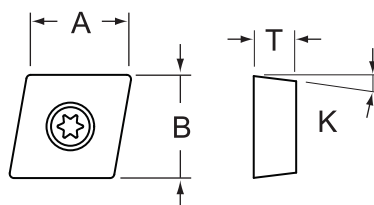
單位:m/m

產品編號 STYLE NO.	產品規格 Model No. Right-hand/Left-hand	尺寸 Dimensions				倒角範圍 Cutting Capacity	刀片 Insert	Screw	Wrench
		d	ØD	L1	L				
053-10012-0801	ST10-C0108-90°-130L	9	10	29	130	Ø1 ~ Ø8	CC** 060204C	P-CS251-J	T8
053-12011-0801	ST12-C0108-90°-98L	9	12	29	98			P-CS251-J	T8
053-12012-0801	ST12-C0108-90°-130L	9	12	29	130			P-CS251-J	T8
053-16011-0801	ST16-C0108-90°-98L	9	16	29	98			P-CS251-J	T8

### 捨棄式倒角刀 (THROW-AWAY CHAMFERING TOOLS)

單位:m/m

產品編號 STYLE NO.	產品規格 Model No. Right-hand/Left-hand	尺寸 Dimensions				倒角範圍 Cutting Capacity	刀片 Insert	Screw	Wrench
		d	ØD	L1	L				
053-12012-1301	ST12-C0113-90°-130L	14	12	29	130	Ø1 ~ Ø13	CC** 09T304C	P-CS35-J	T15
053-16011-1301	ST16-C0113-90°-98L	14	16	29	98			P-CS35-J	T15
053-12022-1301	ST12-CP0113-90°-130L	14	12	29	130		CC** 090308C	P-CS35-J	T15
053-16021-1301	ST16-CP0113-90°-98L	14	16	29	98			P-CS35-J	T15



### 適用刀片 / APPLICABLE INSERTS

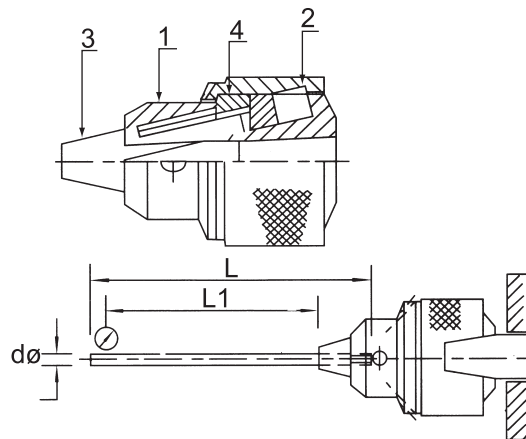
單位:m/m

產品規格 Model No. Right-hand/Left-hand	尺寸 Dimensions					備註
	B	R	T	K		
CCMT060204C	6.35	0.4	2.38	7	GM25 CY250	
CCGT060204C	6.35	0.4	2.38	7	K01	
CCET060204C	6.35	0.4	2.38	7	VP15TF	
CPMT090308C	9.525	0.8	3.18	11	GM25 CY250	
CCMT09T304C	9.525	0.4	3.97	7	GM25 CY250	
CCGT09T304C	9.525	0.4	3.97	7	K01	
CCET09T304C	9.525	0.4	3.97	7	VP15TF	

# 標準型鑽床夾頭

# TYPE:101

## KEY-TYPE DRILL CHUCKS OF STANDARD



E1

### 特性:

- (1) 為標準產品,超精密及耐磨持久。
- (2) 所有零件都經過內、外精密研磨處理。
- (3) 應用於中負荷使用之。
- (4) 零件分析表:(A)
- (5) 偏轉量和轉矩檢驗表:(B)

### Characteristics:

- (1) Standard product with super precision and long durability.
- (2) All parts are treated under interior and exterior grinding process.
- (3) Applicable to medium heavy load.
- (4) Material Analysis Table:(A)
- (5) Run-out Accuracy & Torque Inspection Table:(B)

### ■零件分析表:(A)

零件號碼 Part No.	零件名稱 Part Name	材質 Material	硬 度 Heat-Treatment
1	本體 Body	SCM21	HRC55°~58°
2	鏤塊 Case	SCM21	HRC55°~58°
3	三爪 Jaws	SUJ2	HRC61°±2°
4	螺桿 Nut	SUJ2	HRC61°±2°

### ■偏轉量和轉矩檢驗表:(B)

單位:m/m

產品型號 MODEL No.	1/4"	3/8"	1/2"	5/8"	3/4"	1"
圓棒直徑 $\phi d$	6	9	12	15	18	24
圓棒長度 $L1$	70	85	110	120	120	140
圓棒長度 $L$	90	110	140	150	150	180
最大偏轉量 Max Run-out	0.08	0.08	0.08	0.08	0.08	0.08
轉矩(kgf-cm) Torque	50	100	210	260	300	400

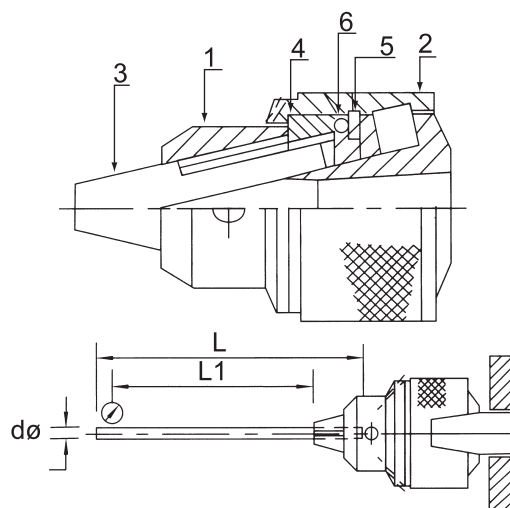
單位:m/m

產品編號 STYLE No.	產品規格 MODEL No.	內孔斜度 DIN or JACOBS	夾持範圍 Clamping Capacity (mm / inch)	直徑 D	長 度		淨重 Wt (kgs)	板手 型式
					開 B	閉 A		
101-02010-0605	1/4"	J1	0.5-6.5 / 1/64"-1/4"	32	40	50	0.20	T
101-02100-0605	1/4"	B10	0.5-6.5 / 1/64"-1/4"	32	40	50	0.20	T
101-03020-1005	3/8"	J2	0.5-10.0 / 1/64"-3/8"	42	50.5	64	0.39	T
101-03120-1005	3/8"	B12	0.5-10.0 / 1/64"-3/8"	42	50.5	64	0.39	T
101-04060-1305	1/2"	J6	0.5-13.0 / 1/64"-1/2"	53	69	82	0.85	T;P
101-04330-1305	1/2"	J33	0.5-13.0 / 1/64"-1/2"	53	69	82	0.85	T;P
101-04160-1305	1/2"	B16	0.5-13.0 / 1/64"-1/2"	53	69	82	0.85	T;P
101-05030-1610	5/8"	J3	1.0-16.0 / 1/32"-5/8"	56	78	96	1.00	P
101-05180-1610	5/8"	B18	1.0-16.0 / 1/32"-5/8"	56	78	96	1.00	P
101-06040-1930	3/4"	J4	3.0-19.0 / 1/8"-3/4"	89	89	126	2.15	P
101-06220-1930	3/4"	B22	3.0-19.0 / 1/8"-3/4"	89	89	126	2.15	P

# 高級滾珠軸承式鑽夾頭

# TYPE:102

## KEY-TYPE DRILL CHUCKS OF BALL BEARING



### 特性:

- (1) 所有零件都經過內、外精密研磨處理。
- (2) 應用於強力和耐磨及重負荷等使用之。
- (3) 零件分析表:(A)
- (4) 偏轉量和轉矩檢驗表:(B)

### Characteristics:

- (1) All parts are treated under interior and exterior grinding process.
- (2) Applicable to powerful heavy load, wear-resistance, and heavy load, etc.
- (3) Material Analysis Table:(A)
- (4) Run-out Accuracy & Torque Inspection Table:(B)

### 零件分析表:(A)

零件號碼 Part No.	零件名稱 Part Name	材質 Material	硬度 Heat-Treatment
1	本體 Body	SCM21	HRC55°~58°
2	鑲塊 Case	SCM21	HRC55°~58°
3	三爪 Jaws	SUJ2	HRC61°±2°
4	螺桿 Nut	SUJ2	HRC61°±2°
5	鋼珠墊片	SUJ2	HRC61°±2°
6	鋼珠(Ball Steel)	-	-

### 偏轉量和轉矩檢驗表:(B)

單位:m/m

產品型號 MODEL No.	3/8"	1/2"	5/8"	3/4"	1"
圓棒直徑 Ød	9	12	15	118	24
圓棒長度 L1	85	110	120	120	140
圓棒長度 L	110	140	150	150	180
最大偏轉量 Max Run-out	0.08	0.08	0.08	0.08	0.08
轉矩(kgf-cm) Torque	170	270	300	400	500

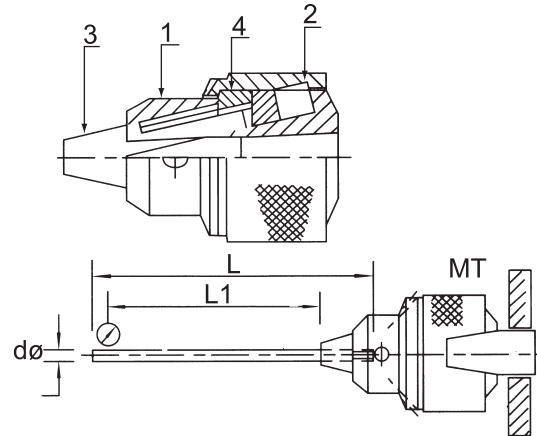
單位:m/m

產品編號 STYLE No.	產品規格 MODEL No.	內孔斜度 DIN or JACOBS	夾持範圍 Clamping Capacity (mm / inch)	直徑 D	長度		淨重 Wt (kgs)	板手 型式
					開 B	閉 A		
102-03020-1010	3/8"	J2	1.0-10.0 / 1/32"-3/8"	45	56	64	0.39	P
102-04030-1310	1/2"	J3	1.0-13.0 / 1/32"-1/2"	62	75	95	1.20	P
102-04060-1310	1/2"	J6	1.0-13.0 / 1/32"-1/2"	62	75	95	1.20	P
102-04330-1310	1/2"	J33	1.0-13.0 / 1/32"-1/2"	62	75	95	1.20	P
102-05030-1610	5/8"	J3	1.0-16.0 / 1/32"-5/8"	65	81	101	1.50	P
102-05180-1610	5/8"	B18	1.0-16.0 / 1/32"-5/8"	65	81	101	1.50	P
102-06040-1910	3/4"	J4	1.0-19.0 / 1/32"-3/4"	74	100	130	2.15	P
102-08050-2550	1"	J5	5.0-25.0 / 3/16"-1"	93	112	153	4.10	P

# 電動用鑽夾頭附螺紋

# TYPE:103

## KEY-TYPE DRILL CHUCKS WITH THREADING



E3

### 特性:

- (1) 所有零件都經過內、外精密研磨處理。
- (2) 應用於木工機械和小型鑽床及中負荷等使用之。
- (3) 零件分析表:(A)
- (4) 偏轉量和轉矩檢驗表:(B)

### ■零件分析表:(A)

零件號碼 Part No.	零件名稱 Part Name	材質 Material	硬 度 Heat-Treatment
1	本體 Body	SCM21	HRC55°~58°
2	鏤塊 Case	SCM21	HRC55°~58°
3	三爪 Jaws	SUJ2	HRC61°±2°
4	螺桿 Nut	SUJ2	HRC61°±2°

### Characteristics:

- (1) All parts are treated under interior and exterior grinding process.
- (2) Applicable to wood processing machine, and small drilling machine, and medium heavy-duty load, etc.
- (3) Material Analysis Table:(A)
- (4) Run-out Accuracy & Torque Inspection Table:(B)

### ■偏轉量和轉矩檢驗表:(B)

單位:m/m

產品型號 MODEL No.	6H	10H	13H	16H
圓棒直徑 $\varnothing d$	6	9	12	15
圓棒長度 L1	70	85	110	120
圓棒長度 L	90	110	140	150
最大偏轉量 Max Run-out	0.15	0.15	0.15	0.15
轉矩(kgf-cm) Torque	45	75	85	250

單位:m/m

產品編號 STYLE No.	產品規格 MODEL No.	逆轉螺絲 孔徑及角度 Female Taper DIN or JACOBS	內孔螺紋 Female Thread Linch or Metric	夾持範圍 Clamping Capacity (mm / inch)	直徑 D	長 度		淨重 Wt (kgs)	板手 型式
						開 B	閉 A		
103-06224-0605	6H-1/4-3/8-24UNF	$\varnothing 5.5 \times 118^\circ$	3/8"-24	0.5-6.5 1/64"-1/4"	32	40	50	0.19	T
103-10320-1010	10H-3/8-1/2-20UNF	$\varnothing 6.5 \times 118^\circ$	1/2"-20	1.0-10.0	38	50.5	64	0.29	T
103-10324-1010	10H-3/8-3/8-24UNF	$\varnothing 5.5 \times 118^\circ$	3/8"-24	1/32"-3/8"	38	50.5	64	0.29	T
103-13420-1310	13H-1/2-1/2-20UNF	$\varnothing 6.5 \times 118^\circ$	1/2"-20	1.0-13.0	47	65	81	0.52	T
103-13424-1310	13H-1/2-3/8-24UNF	$\varnothing 5.5 \times 118^\circ$	3/8"-24	1/32"-1/2"	47	65	81	0.52	T
103-16516-1610	16H-5/8-5/8-16UNF	$\varnothing 7.5 \times 118^\circ$	5/8"-16	1.0-16.0	56	78	96	0.80	P
103-16520-1610	16H-5/8-1/2-20UNF	$\varnothing 6.5 \times 118^\circ$	1/2"-20	1/32"-5/8"	56	78	96	0.80	P



# 小型鑽夾頭

# TYPE:104

## KEY-TYPE DRILL CHUCKS OF SMALL



■零件分析表:(A)

零件號碼 Part No.	零件名稱 Part Name	材質 Material	硬 度 Heat-Treatment
1	本體 Body	SCM21	HRC55°~58°
2	鑲塊 Case	SCM21	HRC55°~58°
3	三爪 Jaws	SUJ2	HRC61°±2°
4	螺桿 Nut	SUJ2	HRC61°±2°

### 特 性:

- (1)所有零件都經過內、外精密研磨處理。
- (2)應用於木工機械和小型鑽床及中負荷等使用之。
- (3)零件分析表:(A)
- (4)偏轉量和轉矩檢驗表:(B)

### Characteristics:

- (1)All parts are treated under interior and exterior grinding process.
- (2)Applicable to wood processing machine, and small drilling machine, and medium heavy-duty load, etc.
- (3)Material Analysis Table:(A)
- (4)Run-out Accuracy & Torque Inspection Table:(B)

■偏轉量和轉矩檢驗表:(B)

單位:m/m

產品型號 MODEL No.	4H	6H	10H	13H	16H	19H
圓棒直徑 Ød	3.5	6	9	12	15	18
圓棒長度 L1	40	70	85	110	120	120
圓棒長度 L	60	90	110	140	150	150
最大偏轉量 Max Run-out	0.15	0.15	0.15	0.15	0.15	0.15
轉矩(kgf-cm) Torque	18	45	75	85	250	300

單位:m/m

產品編號 STYLE No.	產品規格 MODEL No.	內孔斜度 DIN or JACOBS	夾持範圍 Clamping Capacity (mm / inch)	直徑 D	長 度		淨重 Wt (kgs)	板手 型式
					開 B	閉 A		
104-04000-0405	4H	J0	0.5-4.0 / 1/64"-5/32"	22	29	535	0.08	T
104-06010-0605	6H	J1	0.5-6.5 1/64"-1/4"	32	40	50	0.19	T
104-06100-0605	6H	B10		32	40	50	0.19	T
104-10010-1010	10H	J1	1.0-10.0 1/32"-3/8"	38	50.5	64	0.29	T
104-10020-1010	10H	J2		38	50.5	64	0.29	T
104-10120-1010	10H	B12		38	50.5	64	0.29	T
104-13020-1310	13H	J2	1.0-13.0 1/32"-1/2"	47	65	81	0.52	T
104-13060-1310	13H	J6		47	65	81	0.52	T
104-13330-1310	13H	J33		47	65	81	0.52	T
104-13160-1310	13H	B16		47	65	81	0.52	T
104-16030-1610	16H	J3	1.0-16.0 1/32"-5/8"	56	78	96	0.80	P
104-16060-1610	16H	J6		56	78	96	0.80	P
104-16160-1610	16H	B16		56	78	96	0.80	P
104-16180-1610	16H	B18		56	78	96	0.80	P
104-19030-1930	19H	J3	3.0-19.0 1/8"-3/4"	67.5	89	126	1.57	P
104-19220-1930	19H	B22		67.5	89	126	1.57	P

# 攻牙. 鑽孔夾頭附扳手

# TYPE:120

## TAPPING & DRILLING CHUCKS WITH SPANNER WRENCH



E5

### 特性:

- (1) 藉Morse Taper, Jacobs或DIN斜柄連接及止付螺絲鎖緊,以防止在加工作業中滑落之慮。
- (2) 獨特設計鉤式孔, 雙孔雙向螺栓及目視孔;以提高加工效率,具鑽孔,攻牙雙重功能。
- (3) 結構精巧.易握持;零件具互換性.易清潔。
- (4) 本夾頭附鉤式扳手及輔助桿並配合驅動夾塊及三爪鎖緊.增加夾持力及扭力。
- (5) 所有零件都採用合金鋼材質且經過熱處理及精密研磨而成,具剛性,耐磨性佳,精度高,降低刀具磨損。
- (6) 可夾持絲攻,鑽頭;應用於鑽床.攻牙機.旋臂鑽床.CNC綜合切削機等機械使用之。
- (7) 專利號碼: PAT.189467 & PAT.234290。

### Characteristics:

- (1) By means of Morse Taper, Jacobs or DIN shank connecting and stop screw to prevent from falling and sliding during the processing operation.
- (2) Unique and special hook design, double drill two-way bolt and eye-hole to increase the performance efficiency, and it has two function of drilling and tapping.
- (3) Compact structure, easy to hold, parts exchangeable, and simple for cleaning.
- (4) All clamping chuck is attached with hook spanner wrench and auxiliary bar to match to driving clamp-block and 3-jaw tightening to increase the clamping force and torque.
- (5) All parts is made of alloy steel under heat treatment and precise grinding with high rigidity, excellent wear-resistance, and high precision, to reduce the wearing loss of the tool.
- (6) Available to clamp for tapping screw, drilling bit, and applicable to driller, tapping machine, rotary arm drilling machine, CNC comprehensive cutting machine, etc.
- (7) Patent No. : PAT. 189467 & PAT. 234290.

產品型號 MODEL No.	TPC13		TPC16	
圓棒直徑 $\phi$ D	6	9	6	9
圓棒長度L	60			
最大偏轉量	0.12			

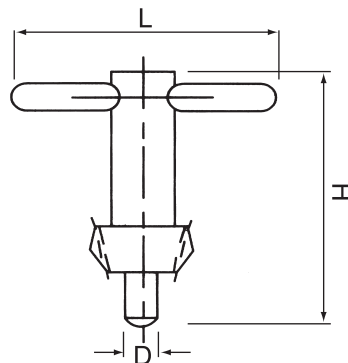
單位:m/m

產品編號 STYLE No.	產品規格 MODEL No.	內孔斜度 DIN or JACOBS	絲攻範圍 Tapping Capacity (mm / inch)	夾持直徑	夾持角部
120-13060-1304	TPC13	J6	M4~M13 / U1/4~U1/2	1.5~10	3.5~7
120-13006-0000-A	TPC13A	J6	M3~M13 / U1/8~U1/2	1.5~10	3.5~7
120-13200-0000-A	TPC13A	MT2	M3~M13 / U1/8~U1/2	1.5~10	3.5~7
120-16003-0000-A	TPC16A	JT3	M3~M16 / U1/8~U5/8	2.5~14	5~11
120-16300-0000-A	TPC16A	MT3	M3~M16 / U1/8~U5/8	2.5~14	5~11

# 熱鍛式鑽夾頭把手

# TYPE:130

## DRILL CHUCK KEYS OF HOT FORGING



### 特性:

- (1) 把手使用"碳鋼"之材質,經過熱處理。
- (2) 用熱鍛製造。
- (3) 齒溝是開口式設計。

### Characteristics:

- (1) Handle is made of "Carbon Steel" under heat treatment.
- (2) Produced by forge hot processing.
- (3) Gear dent is open design.

E6

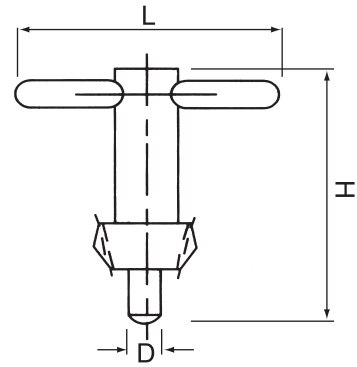
單位:m/m

產品編號 STYLE No.	產品規格 MODEL No.	使用國別 Country		齒數 Teeth	D	H	L	形狀 Shape
		規格 Spes.	型式編號 Model					
130-10111-0320	1/8"(ø3.2)-11T	JAPAN (日本) (JIS)	1CK-2	11	3.2	33	60	T
130-10212-0400	1/4"(ø4.0)-12T		CK-3	12	4	49	65	T
130-10311-0600	3/8"(ø6.0)-11T		CK-1	11	6	34	60	T
130-10312-0550	3/8"(ø5.5)-12T		CK-4	12	5.5	52	75	T
130-10412-0650	1/2"(ø6.5)-12T		CK-5	12	6.5	51	90	T
130-10512-0800	5/8"(ø8.0)-12T		CK-6	12	8.0	60	110	T
130-10612-0950	3/4"(ø9.5)-12T		CK-7	12	10	61	130	T
130-10812-1100	1"(ø11.0)-12T		CK-8	12	11	100	200	T
130-20211-0400	1/4", 5/32"(ø4.0)-11T	USA (美國) (JACOBS)	K1	11	4	34	60	T
130-20211-0550	1/4"(ø5.5)-11T		K7	11	6	38	67	T
130-20310-0600	15/64", 3/8"(ø6.0)-10T		K30	10	6	41	70	T
130-20311-0600	1/4", 3/8"(ø6.0)-11T		KGA	11	6	35	47	T
130-20311-0601	1/4", 3/8"(ø6.0)-11T		KG	11	6	34	60	T
130-20411-0700	3/8", 1/2"(ø7.0)-11T		KKA	11	7	40	65	T
130-20411-0701	3/8", 1/2"(ø7.0)-11T		KK	11	7	40	70	T
130-20412-0600	3/8", 1/2"(ø6.0)-12T		K34	12	6	42	75	T
130-20412-0600	1/2"(ø6.0)-12T		KD8/10	12	6	59	80	T
130-20511-0800	5/8"(ø8.0)-11T		K3	11	8	40	110	T
130-20612-0950	3/4"(ø9.5)-12T		K4	12	10	61	130	T

# 冷鍛式鑽夾頭把手

# TYPE:131

## DRILL CHUCK KEYS OF COLD FORGING



### 特性:

- (1) 把手使用"碳鋼"之材質,經過熱處理。
- (2) 用冷鍛製造。
- (3) 齒溝是半開口式設計,以增加其壽命。

### Characteristics:

- (1) Handle is made of "Carbon Steel" under heat treatment.
- (2) Produced by cold forge.
- (3) Gear dent is half-open design to increase its durability.

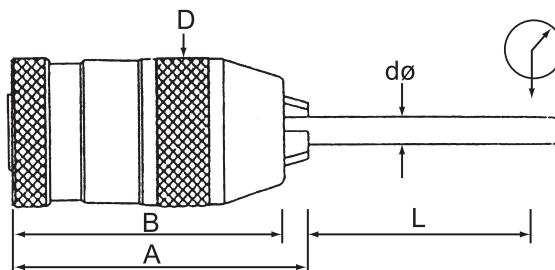
單位:m/m

產品編號 STYLE No.	產品規格 MODEL No.	使用國別 Country		齒數 Teeth	D	H	L	形狀 Shape	
		規格 Specs.	型式編號 Model						
131-10111-0320	1/8"(ø3.2)-11T	JAPAN (日本) (JIS)	CK-1	11	3.2	33	60	T	
131-10212-0400	1/4"(ø4.0)-12T		CK-3	12	4	46	65	T	
131-10212-0401	1/4"(ø4.0)-12T		D5	12	4	34	60	T	
131-10312-0550	3/8"(ø5.5)-12T		CK-4	12	5.5	48	75	T	
131-10412-0650	1/2"(ø6.5)-12T		CK-5	12	6.5	50	90	T	
131-10512-0800	5/8"(ø8.0)-12T		CK-6	12	8	56	110	T	
131-20211-0400	1/4"(ø4.0)-11T	USA (美國) (JACOBS)	K-1	11	4	34	60	T	
131-20311-0550	3/8"(ø5.5)-11T		K7	11	5.5	38	65	T	
131-20311-0600	3/8"(ø6.0)-11T		KG	11	6	34	60	T	
131-20311-0630	3/8"(ø6.3)-11T		K-2	11	6	40	75	T;P	
131-20410-0600	1/2"(ø6.0)-10T		K30	10	6	40	75	T;P	
131-20410-0630	1/2"(ø6.3)-10T		K32	10	6.3	43	90	T	
131-20410-0700	1/2"(ø7.0)-10T		KK	10	7	40	75	T	
131-20412-0600	1/2"(ø6.0)-12T		KD8/10	12	6	40	75	T;P	
131-20511-0800	5/8"(ø8.0)-11T		K-3	11	8	45	110	T;P	
131-30210-0400	1/4"(ø4.0)-10T		GERMANY (德國) (ROHM)	S1	10	4	34	60	T
131-30211-0400	1/4"(ø4.0)-11T	S7		11	4	34	60	T	
131-30311-0550	3/8"(ø5.5)-11T	S18		11	5.5	38	65	T	
131-30311-0600	3/8"(ø6.0)-11T	S14		11	6	34	60	T	
131-30410-0600	1/2"(ø6.0)-10T	S8		10	6	40	75	T;P	
131-30410-0630	1/2"(ø6.3)-10T	S9		10	6.3	43	90	T	
131-30412-0600	1/2"(ø6.0)-12T	S2		12	6	40	75	T;P	
131-30412-0800	1/2"(ø8.0)-12T	S3		12	8	50	90	T;P	
131-30511-0800	5/8"(ø8.0)-11T	S10		11	8	45	110	T;P	
131-30612-0950	3/4"(ø9.5)-12T	S13		12	9.5	60	130	T	
131-40211-0400	1/4"(ø4.0)-11T	BRITAIN (英國) (VITREX)		412/1	11	4.0	34	60	T
131-40311-0550	3/8"(ø5.5)-11T			412/7	11	5.5	38	65	T
131-40311-0600	3/8"(ø6.0)-11T			412/10	11	6	34	65	T
131-40311-0630	3/8"(ø6.3)-11T		412/2	11	6.3	40	75	T;P	
131-40410-0600	1/2"(ø6.0)-10T		412/30	10	6	40	75	T;P	
131-40410-0630	1/2"(ø6.3)-10T		412/32	10	6.3	43	90	T	
131-40410-0700	1/2"(ø7.0)-10T		412/11	10	7	40	75	T	
131-40412-0600	1/2"(ø6.0)-12T		412/34	12	6	40	75	T;P	
131-40511-0800	5/8"(ø8.0)-11T		412/3	11	8	45	110	T;P	

# 快速鑽夾頭

# TYPE:150

## KEYLESS DRILL CHUCK



### 特性:

- (1) 自動地增加其抓著力及扭距, 以避免工具鬆脫。
- (2) 僅需要用手鎖緊, 不需要"key"。
- (3) 所有零件都經過內、外精密研磨處理。
- (4) 應用於重負荷和一般傳統設備等使用之。
- (5) 偏轉量和轉矩檢驗表:(A)

### Characteristics:

- (1) Automatically increase its clamping force and torque to avoid loosening of the tool.
- (2) Only need to screw firmly with hand, and needless of "key"
- (3) All parts are treated under interior and exterior grinding process.
- (4) Applicable to heavy-duty load and traditional general equipment, etc.
- (5) Run-out Accuracy & Torque Inspection Table: (A)

#### ■ 偏轉量和轉矩檢驗表:(A)

單位:m/m

產品型號 MODEL No.	1/4"	3/8"			1/2"			5/8"		
圓棒直徑 Ød	8	3	6	10	5	10	13	5	10	16
圓棒長度 L	50	35	58		55	75		55	80	
最大偏轉量 Max Run-out	0.05	0.05			0.05			0.05		
轉矩(kgf-cm) Torque	80	130			200			300		

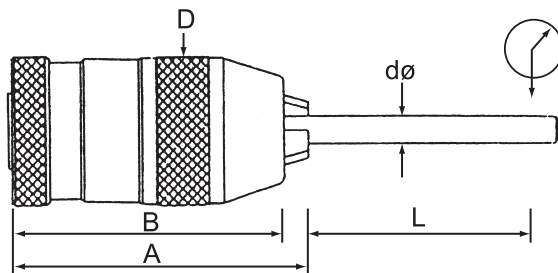
單位:m/m

產品編號 STYLE No.	產品規格 MODEL No.	內孔斜度 DIN or JACOBS	夾持範圍 Clamping Capacity (mm / inch)	直徑 D	長度		淨重 Wt (kgs)
					開 B	閉 A	
150-02010-0800	1/4"	J1	0-8.0 0-5/16"	34	61	69	0.340
150-02100-0800	1/4"	B10		34	61	69	0.340
150-02120-0800	1/4"	B12		34	61	69	0.340
150-03020-1000	3/8"	J2	0-10.0 0-3/8"	43	81	92	0.700
150-03330-1000	3/8"	J33		43	81	92	0.700
150-03120-1000	3/8"	B12		43	81	92	0.705
150-03160-1000	3/8"	B16		43	81	92	0.705
150-04020-1300	1/2"	J2	0-13.0 0-1/2"	51.5	92	103	1.030
150-04060-1300	1/2"	J6		51.5	92	103	1.030
150-04330-1300	1/2"	J33		51.5	92	103	1.035
150-04160-1300	1/2"	B16		51.5	92	103	1.030
150-05030-1630	5/8"	J3	3.0-16.0 1/8"-5/8"	58	95	108	1.370
150-05060-1630	5/8"	J6		58	95	108	1.370
150-05120-1630	5/8"	B12		58	95	108	1.365
150-05160-1630	5/8"	B16		58	95	108	1.340

# 快速鑽夾頭附螺紋

# TYPE:151

## KEYLESS DRILL CHUCKS WITH THREADING



E9

### 特性:

- (1) 自動地增加其抓著力及扭距,以避免工具鬆脫。
- (2) 僅需要用手鎖緊 不需要"key"。
- (3) 所有零件都經過內、外精密研磨處理。
- (4) 應用於電動鑽和輕負荷等使用之。
- (5) 偏轉量和轉矩檢驗表:(A)

### Characteristics:

- (1) Automatically increase its clamping force and torque to avoid losing of the tool.
- (2) Only need to screw firmly with hand, and needless of "key"
- (3) All parts are treated under interior and exterior grinding process.
- (4) Applicable to heavy-duty load and traditional general equipment, etc.
- (5) Run-out Accuracy & Torque Inspection Table: (A)

■ 偏轉量和轉矩檢驗表:(A)

單位:m/m

產品型號 MODEL No.	10EL		13EL			13EL			
圓棒直徑 $\varnothing d$	3	6	10	5	10	13	5	10	16
圓棒長度 L	35		58	55	75	55	80		
最大偏轉量 Max Run-out	0.12		0.12			0.12			
轉矩(kgf-cm) Torque	90		160			250			

單位:m/m

產品編號 STYLE No.	產品規格 MODEL No.	內孔螺紋 Inch or Metric	夾持範圍 Clamping Capacity (mm / inch)	直徑 D	長度		淨重 Wt (kgs)
					開 B	閉 A	
151-10320-1000	10EL-3/8-1/2-20UNF	1/2"-20	1.5-10.0 1/16"-3/8"	34	61	69	0.320
151-10324-1000	10EL-3/8-3/8-24UNF	3/8"-24					
151-13420-1300	13EL-1/2-1/2-20UNF	1/2"-20	1.0-13.0 1/32"-1/2"	42.5	81	92	0.700
151-16516-1600	16EL-5/8-5/8-16UNF	5/8"-16	3.0-16.0 1/8"-5/8"	50.5	97	108	1.035
151-16520-1600	16EL-5/8-1/2-20UNF	1/2"-20					

# 快速鑽夾頭附扳手

# TYPE:152 & 153

## KEYLESS DRILL CHUCKS WITH SPANNER WRENCH



### 特性:

- (1) 自動地增加其抓著力及扭距,以避工鬆脫。
- (2) 僅需要用手鎖緊,不需要"key"。
- (3) 所有零件都經過內、外精密研磨處理。
- (4) 應用於電動鑽和輕負荷等使用之。
- (5) 偏轉量和轉矩檢驗表:(A)

### Characteristics:

- (1) Automatically increase its clamping force and torque to avoid losing of the tool.
- (2) Only need to screw firmly with hand, and needless of "key"
- (3) All parts are treated under interior and exterior grinding process.
- (4) Applicable to heavy-duty load and traditional general equipment, etc.
- (5) Run-out Accuracy & Torque Inspection Table: (A)

E10

### ■ 扳手(SPANNER)

產品型號 STYLE No.	產品規格 MODEL No.
152-02000-0800	SP08H
152-03000-1000	SP10H
152-04000-1300	SP13H
152-05000-1600	SP16H

### ■ 偏轉量和轉矩檢驗表:(A)

單位:m/m

產品型號 MODEL No.	1/4"		3/8"		1/2"		5/8"			
圓棒直徑 Ød	3	8	3	10	5	10	13	5	10	16
圓棒長度 L	35	50	35	60	55	75	55	80		
最大偏轉量 Max Run-out	0.05		0.05		0.05		0.05			
轉矩(kgf-cm) Torque	160		260		400		480			

單位:m/m

產品編號 STYLE No.	產品規格 MODEL No.	內孔螺紋 Inch or Metric	夾持範圍 Clamping Capacity (mm / inch)	直徑 D	長度		淨重 Wt (kgs)
					開 B	閉 A	
153-02010-0800	1/4"	J1	0-8.0 0-5/16"	36	61	69	0.320
153-02020-0800	1/4"	J2		36	61	69	0.320
153-02100-0800	1/4"	B10		36	61	69	0.320
153-02120-0800	1/4"	B12		36	61	69	0.320
153-03020-1000	3/8"	J2	0-10.0 0-3/8"	43	81	92	0.700
153-03330-1000	3/8"	J33		43	81	92	0.700
153-03120-1000	3/8"	B12		43	81	92	0.700
153-03160-1000	3/8"	B16		43	81	92	0.700
153-04060-1300	1/2"	J6	0-13.0 0-1/2"	51.5	92	103	1.030
153-04330-1300	1/2"	J33		51.5	92	103	1.035
153-04160-1300	1/2"	B16		51.5	92	103	1.030
153-05030-1630	5/8"	J3	3.0-16.0 1/8"-5/8"	58	95	108	1.450
153-05060-1630	5/8"	J6		58	95	108	1.450
153-05160-1630	5/8"	B16		58	95	108	1.450
153-05180-1630	5/8"	B18		58	95	108	1.450

# 整體式快速鑽夾頭附板手

# TYPE:154

## KEYLESS DRILL CHUCKS WITH SPANNER OF INTEGRATED



### 特性:

- (1) 因為其採用整體式設計,故減少其容許公差值。
- (2) 它的構造是非常地堅固。
- (3) 自動地增加其抓著力及扭距,以避免工具鬆脫。
- (4) 利用板手增加其扭距,因此抓著力比一般高3倍。
- (5) 所有零件都經過內、外精密研磨處理。
- (6) 應用於銑床機械及重負荷等使用之。
- (7) 偏轉量和轉矩檢驗表:(A)

### Characteristics:

- (1) Adopts of integrated design, so allowance tolerance value is reduced.
- (2) Structure is solid and firm.
- (3) Automatically increase its clamping force and torque to avoid loosening of the tool.
- (4) Making use of spanner wrench to increase the torque, so the clamping force is 3 times of ordinary clamping force.
- (5) All parts are treated under interior and exterior grinding process.
- (6) Applicable to milling machine, and heavy-duty load, etc.
- (7) Run-out Accuracy & Torque Inspection Table:(A)

■ 偏轉量和轉矩檢驗表:(A)

單位:m/m

產品型號 MODEL No.	1/4"			1/2"			5/8"		
圓棒直徑 Ød	3	6	8	5	10	13	5	10	16
圓棒長度 L	35		50	55	75		55		80
最大偏轉量 Max Run-out	0.05			0.05			0.05		
轉矩(kgf-cm) Torque	160			400			480		

單位:m/m

產品編號 STYLE No.	產品規格 MODEL No.	柄徑(D1) Shand	夾持範圍 Clamping Capacity (mm / inch)	直徑 D	長度 Length		淨重 Wt (kgs)
					開(B)	閉(A)	
154-02020-0800	1/4"	MT2	0-8.0 0-5/16"	35	136	144	0.52
154-20020-0800	1/4"	ST20		35	124	132	0.50
154-00840-1300	1/2"	R8	0-13.0 0-1/2"	50.5	190	215	1.50
154-02040-1300	1/2"	MT2		50.5	164	176	1.10
154-03040-1300	1/2"	MT3		50.5	182	194	1.25
154-04040-1300	1/2"	MT4		50.5	206	218	1.58
154-20040-1300	1/2"	ST20		50.5	146	158	1.10
154-25040-1300	1/2"	ST25		50.5	164	176	1.25
154-32040-1300	1/2"	ST32		50.5	164	176	1.45
154-00850-1630	5/8"	R8		3.0-16.0 1/8"-5/8"	56	200	215
154-03050-1630	5/8"	MT3	56		184	198	1.52
154-04050-1630	5/8"	MT4	56		209	213	1.85
154-20050-1630	5/8"	ST20	56		150	164	1.45
154-25050-1630	5/8"	ST25	56		165	179	1.50
154-32050-1630	5/8"	ST32	56		165	179	1.72



# 輕型塑鋼快速鑽夾頭附螺紋

# TYPE:156

## KEYLESS DRILL CHUCKS WITH THREADING OF PLASTIC



### 特性:

- (1) 其消除"key"遺失之問題。
- (2) 藉由高品質塑鋼本體,防止其危險傷害和生銹之困擾。
- (3) 應用於一般電動鑽及輕負荷鑽孔使用。
- (4) 零件分析表:(A)
- (5) 偏心量和轉矩檢驗表:(B)

E12

### Characteristics:

- (1) No problem of "key" loss.
- (2) Body is made of high quality plastic steel to avoid danger injury and rust creating.
- (3) Applicable to general electrical drill and light-duty load drilling.
- (4) Material Analysis Table:(A)
- (5) Run-out Accuracy & Torque Inspection Table:(B)

#### ■零件分析表:(A)

零件號碼 Part No.	零件名稱 Part Name	材質 Material	硬 度 Heat-Treatment
1	本體 Body	SCM21	HRC55°~58°
2	鏢塊 Case	SCM21	HRC55°~58°
3	三爪 Jaws	SUJ2	HRC61°±2°
4	螺桿 Nut	SUJ2	HRC61°±2°
5	圓錐形套筒	塑鋼	-
8	護環	塑鋼	-

#### ■偏轉量和轉矩檢驗表:(B)

單位:m/m

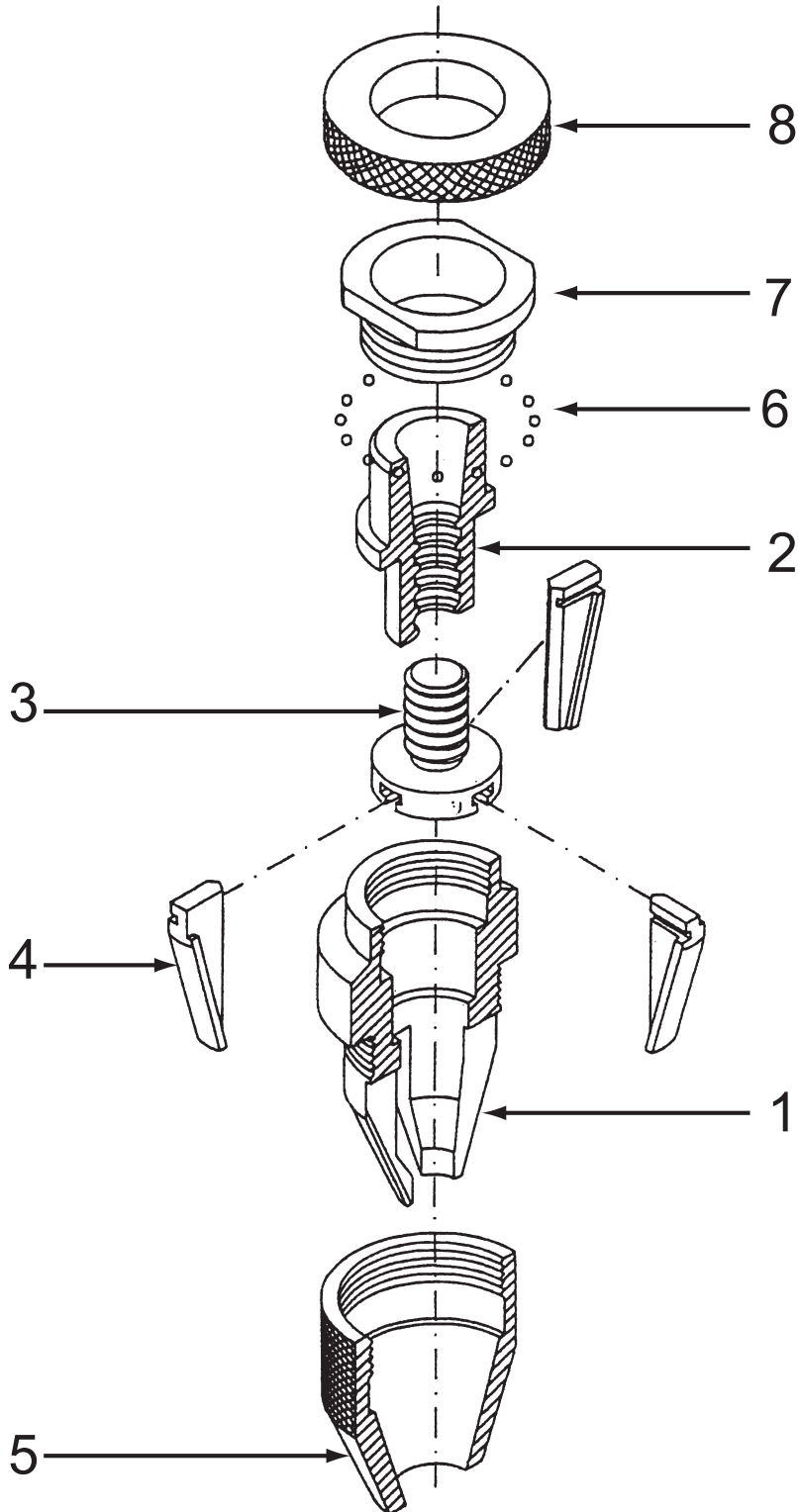
產品型號 MODEL No.	10K	13K
圓棒直徑 Ød	9	12
圓棒長度 L	85	110
最大偏轉量 Max Run-out	0.2	0.2
轉矩(kgf-cm) Torque	70	115

單位:m/m

產品編號 STYLE No.	產品規格 MODEL No.	逆轉螺絲 孔徑及角度 Female Taper DIN or JACOBS	內孔螺紋 Female Thread Inch or Metric	夾持範圍 Clamping Capacity (mm / inch)	直徑 D	長 度 Length		淨重 Wt (kgs)
						開(B)	閉(A)	
156-10320-1010	10K-3/8-1/2-20UNF	ø6.5 x 118°	1/2"-20	1.0-10.0	40	55	65	0.16
156-10324-1010	10K-3/8-3/8-24UNF	ø5.5 x 118°	3/8"-24	1/32"-3/8"	40	55	65	0.16
156-13420-1310	13K-1/2-1/2-20UNF	ø6.5 x 118°	1/2"-20	1.0-13.0	46	66.5	81	0.34
156-13424-1310	13K-1/2-3/8-24UNF	ø5.5 x 118°	3/8"-24	1/32"-1/2"	46	66.5	81	0.34

# 快速鑽夾頭剖面圖

## SECTION DRAWING OF KEYLESS DRILL CHUCKS

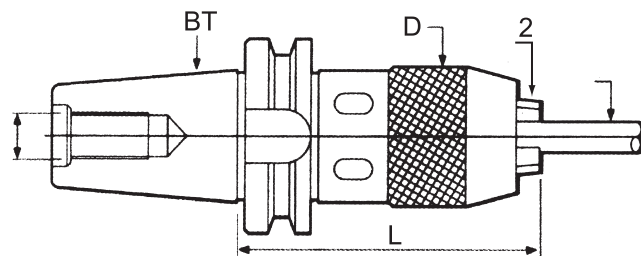


E13

# CNC用BT斜柄快速鑽夾頭附扳手

# TYPE:180

## CNC KEYLESS DRILL CHUCKS WITH BT SHANK



E14

### ■零件分析表:(A)

零件號碼 Part No.	零件名稱 Part Name	材質 Material	硬 度 Heat-Treatment
1	本體 Body	SCM21	HRC55°~58°
2	三爪 Jaws	SUJ2	HRC61°±2°

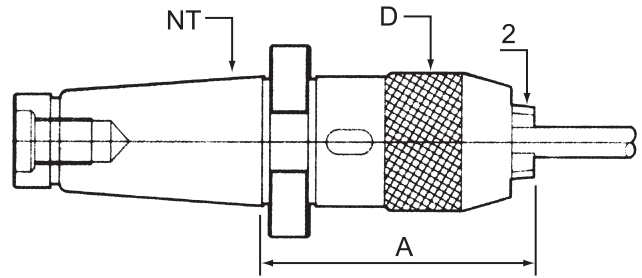
單位:m/m

產品編號 STYLE No.	產品規格 MODEL No.	夾持範圍 Clamping Capacity (mm / inch)	直徑 D	長 度(L)		Co.精度 Accuracy	淨重 Wt (kgs)
				開 B	閉 A		
180-30080-0800	BT30-1/4"- 80	0-8.0 0-5/16"	36.3	75	82	0.05	0.70
180-40085-0800	BT40-1/4"- 85			79	86.5		
180-30120-1300	BT30-1/2"-120	0-13.0 0-1/2"	51.5	110	121	0.05	1.34
180-40110-1300	BT40-1/2"-110			98	109		
180-50105-1300	BT50-1/2"-105			94	105		
180-40125-1630	BT40-5/8"-125	3.0-16.0 1/8"-5/8"	58	114	126	0.05	2.15
180-50120-1630	BT50-5/8"-120			106	120		

# CNC用NT斜柄快速鑽夾頭附扳手

# TYPE:181

## CNC KEYLESS DRILL CHUCKS WITH NT SHANK



E15

### 零件分析表:(A)

零件號碼 Part No.	零件名稱 Part Name	材質 Material	硬 度 Heat-Treatment
1	本體 Body	SCM21	HRC55°~58°
2	三爪 Jaws	SUJ2	HRC61°±2°

單位:m/m

產品編號 STYLE No.	產品規格 MODEL No.	夾持範圍 Clamping Capacity (mm / inch)	直徑 D	長 度(Length)		Co.精度 Accuracy	淨重 Wt (kgs)
				開 B	閉 A		
181-30000-0200	NT30-1/4"	0-8.0 0-5/16"	36.3	70	80	0.05	0.65
181-40000-0200	NT40-1/4"			70	80		
181-30000-0400	NT30-1/2"	0-13.0 0-1/2"	51.5	85	100	0.05	1.30
181-40000-0400	NT40-1/2"			85	100		
181-50000-0400	NT50-1/2"			95	110		
181-40000-0500	NT40-5/8"	3.0-16.0 1/8"-5/8"	58	105	120	0.05	2.03
181-50000-0500	NT50-5/8"			100	115		

# ER螺母/ER扳手

# TYPE:112

## ER CLAMPING NUT/ER SPANNER WRENCH

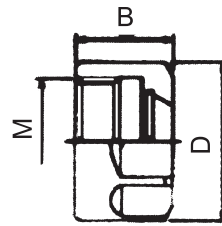
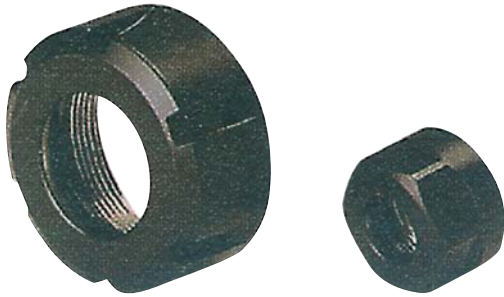


Fig.1

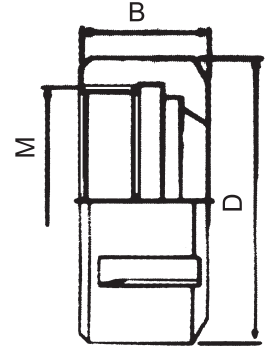


Fig.2

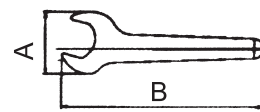


Fig.1

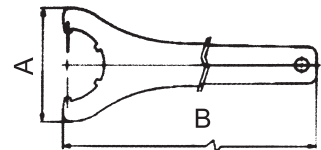


Fig.2

F1

### ■ CN型:ER螺母

單位:m/m

產品編號 STYLE No.	產品規格 MODEL No.	D	B	M	圖號
112-CNER26	CN-ER16	34	17	M22P1.5	1
112-CNER20	CN-ER20	42	19	M25P1.5	1
112-CNER25	CN-ER25	50	20	M32P1.5	2
112-CNER32	CN-ER32	63	22	M40P1.5	2
112-CNER40	CN-ER40	78	25	M50P1.5	2

### ■ SP-ER型:ER扳手

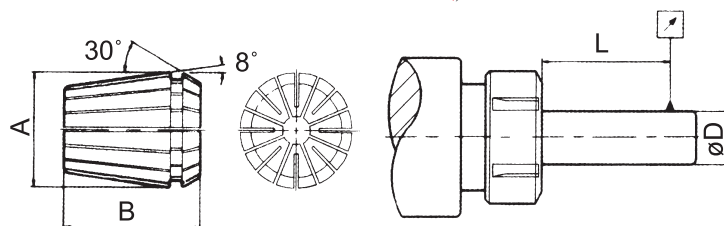
單位:m/m

產品編號 STYLE No.	產品規格 MODEL No.	A	B	圖號
112-SPER16	SP-ER16	45	140	1
112-SPER20	SP-ER20	54	168	1
112-SPER25	SP-ER25	65	210	2
112-SPER32	SP-ER32	75	250	2
112-SPER40	SP-ER40	90	290	2

# ER筒夾

## ER COLLET

TYPE:111



F2

### 特性:

- (1)材質使用"高級鋼", 確保使用壽命。
- (2)筒夾精度符合DIN6499. 適用夾持高精密度刀具。

### Characteristics:

- (1)Made of "High-Class Steel" to ensure for durability.
- (2)Precision of collet is in compliance with DIN6499 to be applicable to clamp for high-precision tool.

### 尺寸:

產品規格 MODEL No.	A	B
ER11	11.5	18
ER16	17	27
ER20	21	31
ER25	26	35
ER32	33	40
ER40	41	46

### 精度:

單位:m/m

L	ØD	精度
6	1.0-1.4	0.015
10	1.5-2.9	0.015
16	3.0-5.9	0.015
25	6.0-9.9	0.015
40	10.0-17.9	0.02

# ER筒夾

# TYPE:111

## ER COLLET

單位:m/m

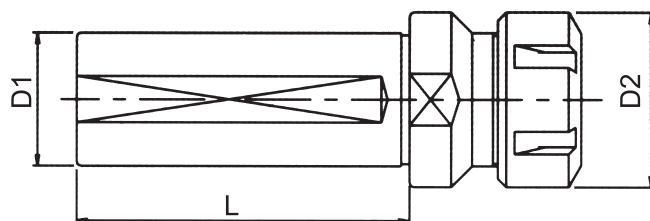
產品編號 STYLE No.	產品規格 MODEL No.	範圍 RANG	產品編號 STYLE No.	產品規格 MODEL No.	範圍 RANG	產品編號 STYLE No.	產品規格 MODEL No.	範圍 RANG
111-ER1130	ER11-3	2.5~3	111-ER163	ER16-3	2~3	111-ER203	ER20-3	2~3
111-ER1135	ER11-3.5	3~3.5	111-ER164	ER16-4	3~4	111-ER204	ER20-4	3~4
111-ER1140	ER11-4	3.5~4	111-ER165	ER16-5	4~5	111-ER205	ER20-5	4~5
111-ER1145	ER11-4.5	4~4.5	111-ER166	ER16-6	5~6	111-ER206	ER20-6	5~6
111-ER1150	ER11-5	4.5~5	111-ER167	ER16-7	6~7	111-ER207	ER20-7	6~7
111-ER1155	ER11-5.5	5~5.5	111-ER168	ER16-8	7~8	111-ER208	ER20-8	7~8
111-ER1160	ER11-6	5.5~6	111-ER169	ER16-9	8~9	111-ER209	ER20-9	8~9
111-ER1165	ER11-6.5	6~6.5	111-ER1610	ER16-10	9~10	111-ER2010	ER20-10	9~10
111-ER1170	ER11-7	6.5~7	-	-	-	111-ER2011	ER20-11	10~11
-	-	-	-	-	-	111-ER2012	ER20-12	11~12
-	-	-	-	-	-	111-ER2013	ER20-13	12~13

產品編號 STYLE No.	產品規格 MODEL No.	範圍 RANG	產品編號 STYLE No.	產品規格 MODEL No.	範圍 RANG	產品編號 STYLE No.	產品規格 MODEL No.	範圍 RANG
111-ER253	ER20-3	2~3	111-ER323	ER32-3	2~3	111-ER404	ER40-4	3~4
111-ER254	ER20-4	3~4	111-ER324	ER32-4	3~4	111-ER405	ER40-5	4~5
111-ER255	ER20-5	4~5	111-ER325	ER32-5	4~5	111-ER406	ER40-6	5~6
111-ER256	ER20-6	5~6	111-ER326	ER32-6	5~6	111-ER407	ER40-7	6~7
111-ER257	ER20-7	6~7	111-ER327	ER32-7	6~7	111-ER408	ER40-8	7~8
111-ER258	ER20-8	7~8	111-ER328	ER32-8	7~8	111-ER409	ER40-9	8~9
111-ER259	ER20-9	8~9	111-ER329	ER32-9	8~9	111-ER4010	ER40-10	9~10
111-ER2510	ER20-10	9~10	111-ER3210	ER32-10	9~10	111-ER4011	ER40-11	10~11
111-ER2511	ER20-11	10~11	111-ER3211	ER32-11	10~11	111-ER4012	ER40-12	11~12
111-ER2512	ER20-12	11~12	111-ER3212	ER32-12	11~12	111-ER4013	ER40-13	12~13
111-ER2513	ER20-13	12~13	111-ER3213	ER32-13	12~13	111-ER4014	ER40-14	13~14
111-ER2514	ER20-14	13~14	111-ER3214	ER32-14	13~14	111-ER4015	ER40-15	14~15
111-ER2515	ER20-15	14~15	111-ER3215	ER32-15	14~15	111-ER4016	ER40-16	15~16
111-ER2516	ER20-16	15~16	111-ER3216	ER32-16	15~16	111-ER4017	ER40-17	16~17
-	-	-	111-ER3217	ER32-17	16~17	111-ER4018	ER40-18	17~18
-	-	-	111-ER3218	ER32-18	17~18	111-ER4019	ER40-19	18~19
-	-	-	111-ER3219	ER32-19	18~19	111-ER4020	ER40-20	19~20
-	-	-	111-ER3220	ER32-20	19~20	111-ER4021	ER40-21	20~21
-	-	-	-	-	-	111-ER4022	ER40-22	21~22
-	-	-	-	-	-	111-ER4023	ER40-23	22~23
-	-	-	-	-	-	111-ER4024	ER40-24	23~24
-	-	-	-	-	-	111-ER4025	ER40-25	24~25
-	-	-	-	-	-	111-ER4026	ER40-26	25~26

# 直柄側固式ER筒夾柄

# TYPE:182

## STRAIGHT SHANK SIDE-LOCK ER COLLET



F3

### ■ SL型:側固式 (SL type: Straight shank side-lock type)

單位:m/m

產品編號 STYLE No.	產品規格 MODEL No.	D1	D2	L	筒夾型式
182-SL16ER1180	SL16-ER11-80	16	19	80	ER11
182-SL16ER1680	SL16-ER16-80	16	28	80	ER16
182-SL20ER1680	SL20-ER16-80	20	28	80	ER16
182-SL20ER16120	SL20-ER16-120	20	28	120	ER16
182-SL20ER2080	SL20-ER20-80	20	34	80	ER20
182-SL20ER20120	SL20-ER20-120	20	34	120	ER20
182-SL25ER1670	SL25-ER16-70	25	28	70	ER16
182-SL25ER2070	SL25-ER20-70	25	34	70	ER20
182-SL25ER2580	SL25-ER25-80	25	42	80	ER25
182-SL32ER2580	SL32-ER25-80	32	42	80	ER25
182-SL32ER3280	SL32-ER32-80	32	50	80	ER32
182-SL32ER32125	SL32-ER32-125	32	50	125	ER32
182-SL40ER2580	SL40-ER25-80	40	42	80	ER25
182-SL40ER3280	SL40-ER32-80	40	50	80	ER32
182-SL40ER32135	SL40-ER32-135	40	50	135	ER32



# 快速交換接頭

# TYPE:205

## QUICK CHANGE DRILL CHUCKS & COLLET



### 特性:

- (1) 本體和Collets使用"合金鋼"之材質;經過熱處理。
- (2) 本體及Collets所有零件都經過內、外精密研磨處理。
- (3) 交換更快速。
- (4) 使用鋼環套及彈簧圈避免發生危險,並增加其壽命。
- (5) 其具有夾頭雙倍壽命:當一組鋼珠磨損時,可立即換另一組鋼珠;以增加效率,降低成本。
- (6) 這Collets允許使用標準Morse Taper 柄之刀具。

### Characteristics:

- (1) Body and Collets are made of "Alloy Steel" under heat treatment.
- (2) All parts of body and Collets are treated under interior and exterior grinding process.
- (3) Rapid for exchange.
- (4) Use of steel ring housing and spring coil to avoid danger creating and increase its service life.
- (5) Has double service life chuck: when one set of steel ball is worn out, another new set can be replaced to increase efficiency and reduce the cost.
- (6) The Collects is allowed to use of standard Morse Taper shank.

單位:m/m

產品編號 STYLE No.	產品規格 MODEL No.	COLLETS			Co.精度 Accuracy
		QC2-MT1	QC2-MT2	-	
205-02024-0000	QC2-2C	QC2-MT1	QC2-MT2	-	0.02
205-03032-0000	QC3-3C	QC3-MT1	QC3-MT2	QC3-MT3	0.02
205-04038-0000	QC4-3C	QC4-MT2	QC4-MT3	QC4-MT4	0.02

G1

### ■本體 (Body) :

單位:m/m

產品編號 STYLE No.	產品規格 MODEL No.	外徑 MT	L	Co.精度 Accuracy
205-02024-0001	QC2	2	167	0.005
205-03032-0001	QC3	3	183	0.005
205-04038-0001	QC4	4	215	0.005

### ■COLLETS:

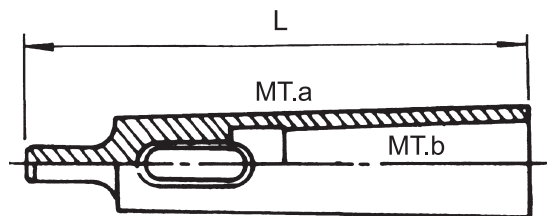
單位:m/m

產品編號 STYLE No.	產品規格 MODEL No.	內徑 MT	D	L	Co.精度 Accuracy
205-02024-2100	QC2-MT1	1	24	75	0.005
205-02024-2200	QC2-MT2	2	24	85	0.005
205-03032-3100	QC3-MT1	1	32	80	0.005
205-03032-3200	QC3-MT2	2	32	90	0.005
205-03032-3300	QC3-MT3	3	32	108	0.005
205-04038-4200	QC4-MT2	2	38	92.5	0.005
205-04038-4300	QC4-MT3	3	38	110	0.005
205-04038-4400	QC4-MT4	4	38	133	0.005

# 精密鑽頭套筒

# TYPE:210

## DRILL SLEEVES



### 特性:

- (1)標準型鑽頭套筒使用"碳鋼"之材質,經過熱處理其硬度為(HRC40° ~45° )。
- (2)本體經過內、外精密研磨處理。
- (3)內、外斜柄採用DIN2185規格。

### Characteristics:

- (1)Standard type drill collet is made of "Carbon Steel" under heat treatment (HRC40°~45°)
- (2)Body is under interior and exterior precise grinding process.
- (3)Inside and outside Morse Taper complies with DIN2185.

單位:m/m

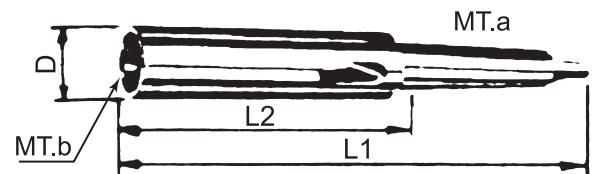
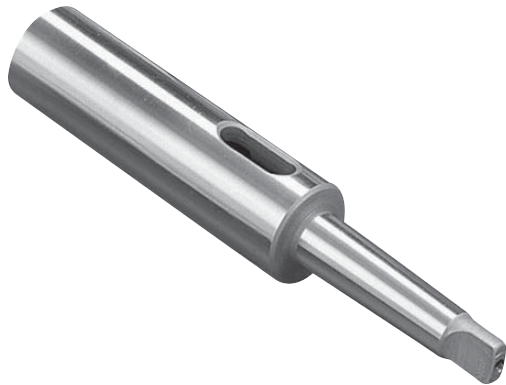
G2

等級	產品編號 STYLE No.	產品規格 MODEL No.	MT.b	MT.a	L	Co.精度 Accuracy
AA	210-01201-0000	MTIX2	1	2	92	0.005
	210-01301-0000	MTIX3	1	3	99	0.005
	210-01401-0000	MTIX4	1	4	124	0.005
	210-01501-0000	MTIX5	1	5	156	0.005
	210-02301-0000	MT2X3	2	3	112	0.005
	210-02401-0000	MT2X4	2	4	124	0.005
	210-02501-0000	MT2X5	2	5	156	0.005
	210-03401-0000	MT3X4	3	4	140	0.005
	210-03501-0000	MT3X5	3	5	156	0.005
	210-03601-0000	MT3X6	3	6	218	0.005
	210-04501-0000	MT4X5	4	5	171	0.005
	210-04601-0000	MT4X6	4	6	218	0.005
	210-05601-0000	MT5X6	5	6	218	0.005

# 延長型鑽頭套筒

## EXTENSION DRILL SOCKETS

# TYPE:211



### 特性:

- (1)延長型鑽頭套筒使用"合金鋼"之材質,經過熱處理其硬度為(HRC55°~60°)。
- (2)本體經過內、外精密研磨處理。
- (3)內、外斜柄採用DIN2187規格。

### Characteristics:

- (1)Extension type drill chuck collet is made of "Alloy Steel" under heat treatment with hardness at (HRC55°~60°)
- (2)Body is under interior and exterior precise grinding process.
- (3)Inside and outside Morse Taper complies with DIN2185.

單位:m/m

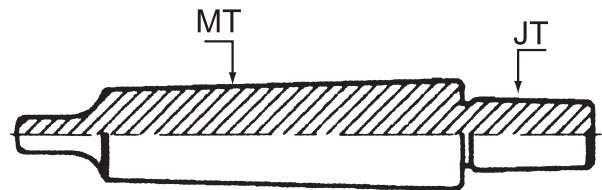
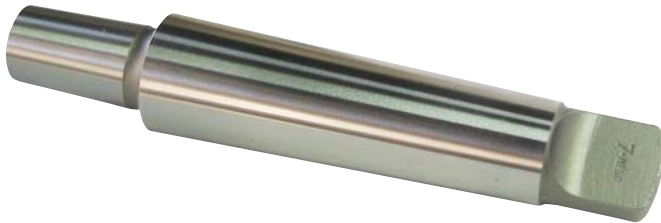
G3

產品編號 STYLE No.	產品規格 MODEL No.	MT.b	MT.a	D	L2	L1	Co.精度 Accuracy
211-01101-1450	MT1to1x145	1	1	18	83	145	0.01
211-01201-1600	MT1to2x160	1	2	18	85	160	0.01
211-01301-1750	MT1to3x175	1	3	20	81	175	0.01
211-01401-2040	MT1to4x204	1	4	20	96	204	0.01
211-02101-1600	MT2to1x160	2	1	24	98	160	0.01
211-02201-1750	MT2to2x175	2	2	24	100	175	0.01
211-02301-1940	MT2to3x194	2	3	24	100	194	0.01
211-02401-2150	MT2to4x215	2	5	24	97	215	0.01
211-02501-2540	MT2to5x254	2	4	24	104	254	0.01
211-03201-1960	MT3to2x196	3	2	32	121	196	0.01
211-03301-2150	MT3to3x215	3	3	32	121	215	0.01
211-03401-2400	MT3to4x240	3	4	32	122	240	0.01
211-03501-2680	MT3to5x268	3	5	32	118	268	0.01
211-04201-2210	MT4to2x221	4	2	45	146	221	0.01
211-04301-2400	MT4to3x240	4	3	45	146	240	0.01
211-04401-2650	MT4to4x265	4	4	45	147	265	0.01
211-04501-3000	MT4to5x300	4	5	45	150	300	0.01
211-05301-2750	MT5to3x275	5	3	63	181	275	0.01
211-05401-3000	MT5to4x300	5	4	63	182	300	0.01
211-05501-3350	MT5to5x335	5	5	63	182	335	0.01

# 精密鑽夾頭柄

# TYPE:230

## PRECISE DRILL CHUCK ARBOR



### 特性:

- (1) 鑽夾頭柄使用"碳鋼"之材質, 經過熱處理其硬度為 (HRC40°~45°)。
- (2) 本體經過精密研磨處理。
- (3) 其應用於鑽床等機械上。
- (4) 外徑斜柄採用(DIN238)和(JACOBS)規格。

### Characteristics:

- (1) Drill chuck collet is made of "Carbon Steel" under heat treatment with hardness at (HRC40°~45°)
- (2) Body is under precise grinding process.
- (3) Applicable to drilling machine, etc.
- (4) Inside and outside Morse Taper complies with DIN238 and JACOBS.

單位:m/m

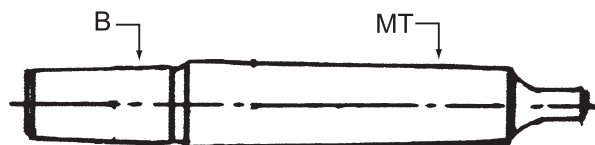
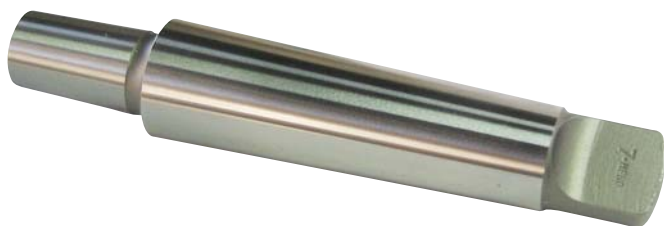
G4

產品編號 STYLE No.	產品規格 MODEL No.	MT	JT	Co.精度 Accuracy
230-01011-0200	MT1-JT1(1/4)	1	1	0.005
230-01021-0300	MT1-JT2(3/8)	1	2	0.005
230-01061-0400	MT1-JT6(1/2)	1	6	0.005
230-01331-0400	MT1-JT33(1/2)	1	33	0.005
230-02011-0200	MT2-JT1(1/4)	2	1	0.005
230-02021-0300	MT2-JT2(3/8)	2	2	0.005
230-02031-0500	MT2-JT3(5/8)	2	3	0.005
230-02041-0600	MT2-JT4(3/4)	2	4	0.005
230-02061-0400	MT2-JT6(1/2)	2	6	0.005
230-02331-0400	MT2-JT33(1/2)	2	33	0.005
230-03011-0200	MT3-JT1(1/4)	3	1	0.005
230-03021-0300	MT3-JT2(3/8)	3	2	0.005
230-03031-0500	MT3-JT3(5/8)	3	3	0.005
230-03041-0600	MT3-JT4(3/4)	3	4	0.005
230-03051-0800	MT3-JT5(1)	3	5	0.005
230-03061-0400	MT3-JT6(1/2)	3	6	0.005
230-03331-0400	MT3-JT33(1/2)	3	33	0.005
230-04021-0300	MT4-JT2(3/8)	4	2	0.005
230-04031-0500	MT4-JT3(5/8)	4	3	0.005
230-04041-0600	MT4-JT4(3/4)	4	4	0.005
230-04051-0800	MT4-JT5(1)	4	5	0.005
230-04061-0400	MT4-JT6(1/2)	4	6	0.005
230-04331-0400	MT4-JT33(1/2)	4	33	0.005
230-05031-0500	MT5-JT3(5/8)	5	3	0.005
230-05041-0600	MT5-JT4(3/4)	5	4	0.005
230-05051-0800	MT5-JT5(1)	5	5	0.005
230-05061-0400	MT5-JT6(1/2)	5	6	0.005

# 精密鑽夾頭柄

# TYPE:232

## PRECISE DRILL CHUCK ARBOR



### 特性:

- (1)鑽夾頭柄使用"碳鋼"之材質,經過熱處理其硬度為(HRC40°~45°)。
- (2)本體經過精密研磨處理。
- (3)其應用於鑽床等機械上。
- (4)外徑斜柄採用(DIN238)和(JACOBS)規格。

### Characteristics:

- (1)Drill chuck collet is made of "Carbon Steel" under heat treatment with hardness at (HRC40°~45°)
- (2)Body is under precise grinding process.
- (3)Applicable to drilling machine, etc.
- (4)Inside and outside Morse Taper complies with DIN238 and JACOBS.

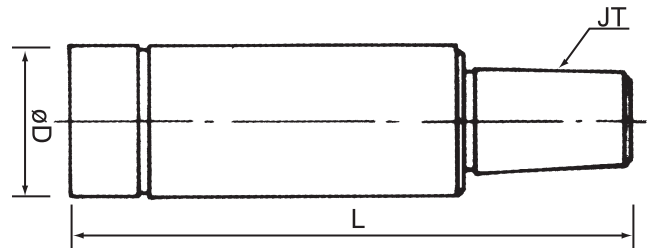
單位:m/m

產品編號 STYLE No.	產品規格 MODEL No.	MT	B	Co.精度 Accuracy
232-01101-0000	MT1-B10	1	10	0.005
232-01121-0000	MT1-B12	1	12	0.005
232-01161-0000	MT1-B16	1	16	0.005
232-01181-0000	MT1-B18	1	18	0.005
232-02101-0000	MT2-B10	2	10	0.005
232-02121-0000	MT2-B12	2	12	0.005
232-02161-0000	MT2-B16	2	16	0.005
232-02181-0000	MT2-B18	2	18	0.005
232-03121-0000	MT3-B12	3	12	0.005
232-03161-0000	MT3-B16	3	16	0.005
232-03181-0000	MT3-B18	3	18	0.005
232-04121-0000	MT4-B12	4	12	0.005
232-04161-0000	MT4-B16	4	16	0.005
232-04181-0000	MT4-B18	4	18	0.005
232-05161-0000	MT5-B16	5	16	0.005
232-05181-0000	MT5-B18	5	18	0.005

# 銑床直柄夾頭棒

# TYPE:233

## STRAIGHT SHANK DRILL CHUCK ARBOR



### 特性:

- (1) 鑽夾頭柄使用"合金剛"之材質,經過熱處理其硬度為 (HRC55°~60°)。
- (2) 本體經過精密研磨處理。
- (3) 其應用於銑床機械上。

### Characteristics:

- (1) Drill chuck is made of "Alloy Steel" under heat treatment with hardness at (HRC40°~45°)
- (2) Body is under precise grinding process.
- (3) Applicable to drilling machine, etc.

G6

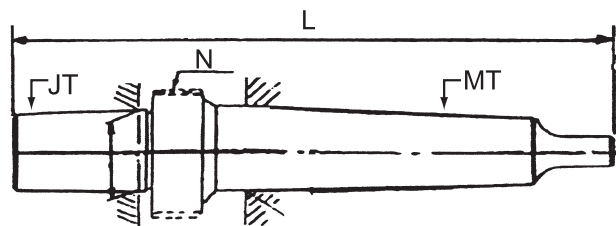
單位:m/m

產品編號 STYLE No.	產品規格 MODEL No.	ØD	JT	L	Co.精度 Accuracy
233-20011-0200	JC20-JT1(1/4)	20	1	72	0.005
233-20021-0300	JC20-JT2(3/8)	20	2	77	0.005
233-20031-0500	JC20-JT3(5/8)	20	2	86	0.005
233-20061-0400	JC20-JT6(1/2)	20	6	81	0.005
233-25011-0200	JC25-JT1(1/4)	25	1	82	0.005
233-25021-0300	JC25-JT2(3/8)	25	2	87	0.005
233-25031-0500	JC25-JT3(5/8)	25	3	96	0.005
233-25061-0400	JC25-JT6(1/2)	25	6	91	0.005
233-32011-0200	JC32-JT1(1/4)	32	1	97	0.005
233-32021-0300	JC32-JT2(3/8)	32	2	102	0.005
233-32031-0500	JC32-JT3(5/8)	32	3	111	0.005
233-32061-0400	JC32-JT6(1/2)	32	6	106	0.005

# 鑽夾頭柄附螺母

# TYPE:234

## DRILL CHUCK ARBOR WITH DRAW-OFF NUT



### 特性:

- (1)鑽夾頭柄使用"合金剛"之材質,經過熱處理其硬度為(HRC55°~60°)
- (2)本體經過精密研磨處理。
- (3)其應用於鑽床等機械上,利用螺母快速退下鑽夾頭,增加其效率。
- (4)外徑斜柄採用DIN238和JACOBS規格。

G7

### Characteristics:

- (1)Drill chuck is made of "Alloy Steel" under heat treatment with hardness at (HRC55°~60°)
- (2)Body is under precise grinding process.
- (3)Applicable to drilling machine, etc. by using of screw nut to withdraw rapidly the drill chuck for high efficiency.
- (4)O.D. Morse Taper complies with DIN238 and JACOBS.

單位:m/m

產品編號 STYLE No.	產品規格 MODEL No.	MT	JT	L	Co.精度 Accuracy	N
234-02061-0400	MT2-JT6N	2	6	122.4	0.005	M26P1.5
234-03061-0400	MT3-JT6N	3	6	141.4	0.005	
234-04061-0400	MT4-JT6N	4	6	166.4	0.005	

# 銑床直柄夾頭棒附螺母

# TYPE:235

## STRAIGHT SHANK DRILL CHUCK ARBOR WITH DRAW-OFF NUT



G8

### 特性:

- (1) 鑽夾頭柄使用"合金剛"之材質,經過熱處理其硬度為(HRC55°~60°),
- (2) 本體經過精密研磨處理。
- (3) 其應用於銑床機械上,利用螺母快速退下鑽夾頭,增加其效率。
- (4) 外徑斜柄採用DIN238和JACOBS規格。

### Characteristics:

- (1) Drill chuck is made of "Alloy Steel" under heat treatment with hardness at (HRC55°~60°)
- (2) Body is under precise grinding process.
- (3) Applicable to drilling machine, etc. by using of screw nut to withdraw rapidly the drill chuck for high efficiency.
- (4) O.D. Morse Taper complies with DIN238 and JACOBS.

單位:m/m

產品編號 STYLE No.	產品規格 MODEL No.	øD	JT	L	Co.精度 Accuracy	N
235-20061-0400	ST20-JT6N	20	65	107	0.005	M26P1.5
235-25061-0400	ST25-JT6N	25	80	122	0.005	
235-25331-0400	ST25-JT33N	25	80	122	0.005	
235-32061-0400	ST32-JT6N	32	80	122	0.005	



# 互換式星形扳手組

## EXCHANGEABLE START-WRENCH

# TYPE:051



### 特性:

- (1) 扳手用合金鋼材質製造, 硬度, 強度, 耐磨性俱佳。
- (2) 更換扳手快速方便, 提昇作業效率。

### Characteristics:

- (1) Spanner wrench is made of "Alloy Steel" with excellent hardness, strength, and wear-resistance.
- (2) Easy to replace the spanner wrench to increase operating performance.

G9

### ■ 扳手頭(Driver Holder)

產品編號 STYLE No.	產品規格 MODEL No.
051-02506-0000	DH-1/4

### ■ 扳手(Bits)

產品編號 STYLE No.	產品規格 MODEL No.
051-02506-0600	T6
051-02506-0700	T7
051-02506-0800	T8
051-02506-0900	T9
051-02506-1000	T10
051-02506-1500	T15
051-02506-2000	T20
051-02506-2500	T25

### ■ 組(Sets)

產品編號 STYLE No.	產品規格 MODEL No.	範圍
051-02506-0008	T6T25-8P	T6, T7, T8, T9, T10, T15, T20, T25

# 強力萬向磁性座 (機械式)

# TYPE:600

## UNIVERSAL MAGNETIC STAND (MECHANICAL TYPE)



### 特性:

- (1) 可萬向迴轉及微調。
- (2) 可配合鳩尾槽和6mm及8mm之孔徑, 以夾持量錶。
- (3) 採獨特設計, 提高其使用壽命。
- (4) 不附錶

### Characteristics:

- (1) All-direction universal rotary and micro-adjustment.
- (2) Available to match to dove tail type and bore of 6mm and 8mm with measuring gage.
- (3) Special design to increase its service life.
- (4) No gage.

### ■ 整組(SETS)

產品編號 STYLE No.	產品規格 MODEL No.	磁 力 Magnetic power (kgf)
600-00800-0000	MS-UL80	80
600-00800-0002	MS-UL80A	80
600-01000-0000	MS-UL100	100
600-01000-0002	MS-UL100A	100

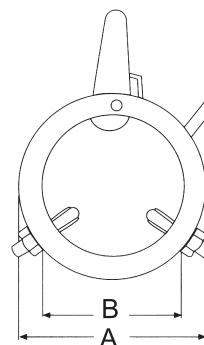
### ■ 萬向肢體(Universal Body)

產品編號 STYLE No.	產品規格 MODEL No.
600-01001-0000	MS-UL100
600-01001-0002	MS-UL100A

### ■ 磁性座(Magnetic Holder Bed)

產品編號 STYLE No.	產品規格 MODEL No.	磁 力 Magnetic power (kgf)
600-00802-0000	MS-80	80
600-01002-0000	MS-100	100

## DRIVING CENTER



### 特性:

- (1)操作簡便。
- (2)適用圓筒磨床。
- (3)"DRC-\*A":特殊規格。

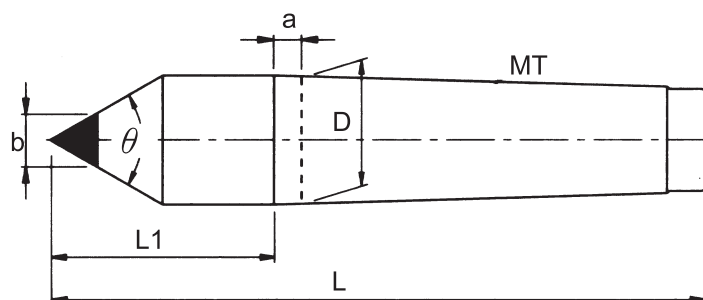
### Characteristics:

- (1)Easy to set-up
- (2)Applicable to cylinder drilling machine.
- (3)"DRE" \* A" : Special specification.

產品編號 STYLE No.	產品規格 MODEL No.	範圍 m/m	A	B
399-00000-0005	DRC-5	ø0~ø5	30	10
399-00000-0010	DRC-10	ø5~ø10	35	15
399-00000-0014	DRC-14A	ø6~ø14	36	18
399-00000-0015	DRC-15	ø10~ø15	40	20
399-00000-0020	DRC-20	ø15~ø20	45	25
399-00000-0024	DRC-24A	ø13~ø24	48	28
399-00000-0025	DRC-25	ø20~ø25	50	30
399-00000-0030	DRC-30	ø25~ø30	55	35
399-00000-0033	DRC-33A	ø20~ø33	58	38
399-00000-0035	DRC-35	ø30~ø35	60	40
399-00000-0040	DRC-40	ø35~ø40	65	45
399-00000-0042	DRC-42A	ø31~ø42	68	48
399-00000-0045	DRC-45	ø40~ø45	70	50
399-00000-0049	DRC-50A	ø35~ø50	78	58
399-00000-0050	DRC-50	ø45~ø50	75	55
399-00000-0055	DRC-55	ø50~ø55	80	60
399-00000-0059	DRC-62A	ø40~ø62	89	68
399-00000-0060	DRC-60	ø55~ø60	85	65
399-00000-0065	DRC-65	ø60~ø65	90	70
399-00000-0070	DRC-70	ø65~ø70	95	75
399-00000-0075	DRC-75	ø70~ø75	100	80
399-00000-0079	DRC-80A	ø60~ø80	119	88
399-00000-0080	DRC-80	ø75~ø80	105	85
399-00000-0090	DRC-90	ø85~ø90	115	95
399-00000-0099	DRC-100A	ø80~ø100	140	109
399-00000-0100	DRC-100	ø95~ø100	125	105

## SOLID CENTERS OF CARBIDE TIPPED (A CLASS)

A6



### 特性:

- (1) 本體使用"S45C"之材質；經過熱處理。
- (2) 本體及頂心經過精密研磨處理。
- (3) 適用於車床及磨床等機械。
- (4) 外徑斜度(Morse Taper)採用DIN806規格。

### Characteristics:

- (1) Body is made of "S45C" with heat treatment.
- (2) Body and Center is under precise grinding process.
- (3) Application to lathe and grinder.
- (4) Morse Taper complies with DIN806 standard.

單位:m/m

產品編號 STYLE No.	產品規格 MODEL No.	D	a	b	L1	L	Co.精度 Accuracy	$\theta$
310-02006-0000	MT2C06	17.780	5	6	31	100	0.005	60°
310-03008-0000	MT3C08	23.825	5	8	39	125	0.005	60°
310-04010-0000	MT4C10	31.267	6.5	10	46	155	0.005	60°
310-05014-0000	MT5C14	44.399	6.5	14	64	200	0.005	60°
310-06018-0000	MT6C18	63.348	8	18	80	270	0.005	60°

# *memo*

A series of horizontal dashed lines for writing.



# 立足台灣、胸懷亞洲、放眼天下

Footing At Taiwan, Broad Minded of Asia & Glance on World



**主上工業股份有限公司**

PRAISE PRECISION IND.CO.,LTD.

40148 台中市東區天乙街66號

40148 No. 66 Tan Ye Street, East Dist, Taichung, Taiwan.

TEL : 886-4-22810909 FAX : 886-4-22810923

E-mail: seven.hero@msa.hinet.net

skype:praiskype.praiscope01